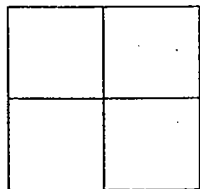


CORNER RECORD

Document Number 01-3
County of San Joaquin, California

City of _____

Brief Legal Description INTERSECTION OF DEVRIES ROAD AND TREDWAY ROAD



CORNER TYPE

Government Corner Control
Meander Property
Rancho Other
Date of Survey NOVEMBER 30, 2000

COORDINATES (Optional)

N. _____
E. _____
Zone _____ NAD27 NAD83
NAD83 Epoch _____
Elev. _____
Vert. Datum: NGVD29 NAVD88
Meas. Units: Metric Imperial

Corner - Left as found Found and tagged Established Reestablished Rebuilt

Identification and type of corner found: Evidence used to identify or procedure used to establish or reestablish the corner
FOUND PK NAIL. CONFIRMED LOCATION PER SWINGS ON CR-00-056. SEE SKETCH ON BACKSIDE.

A description of the physical condition of the monument as found and as set or reset:
FOUND MONUMENT IN GOOD CONDITION. PLACED MONUMENT WELL OVER MONUMENT. SEE SKETCH ON BACKSIDE

SURVEYOR'S STATEMENT

This Corner Record was prepared by me or under my direction in conformance with the Land Surveyors' Act on 1-5-, 2001.

Signed [Signature] L.S. or R.C.E. Number 23341

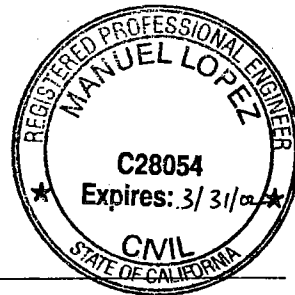
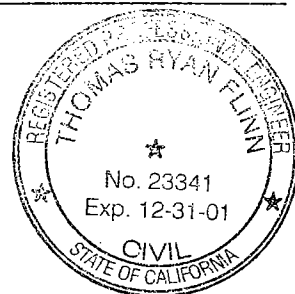
COUNTY SURVEYOR'S STATEMENT

This Corner Record was received 1-8-, 2001 and examined and filed Jan 9, 2001.

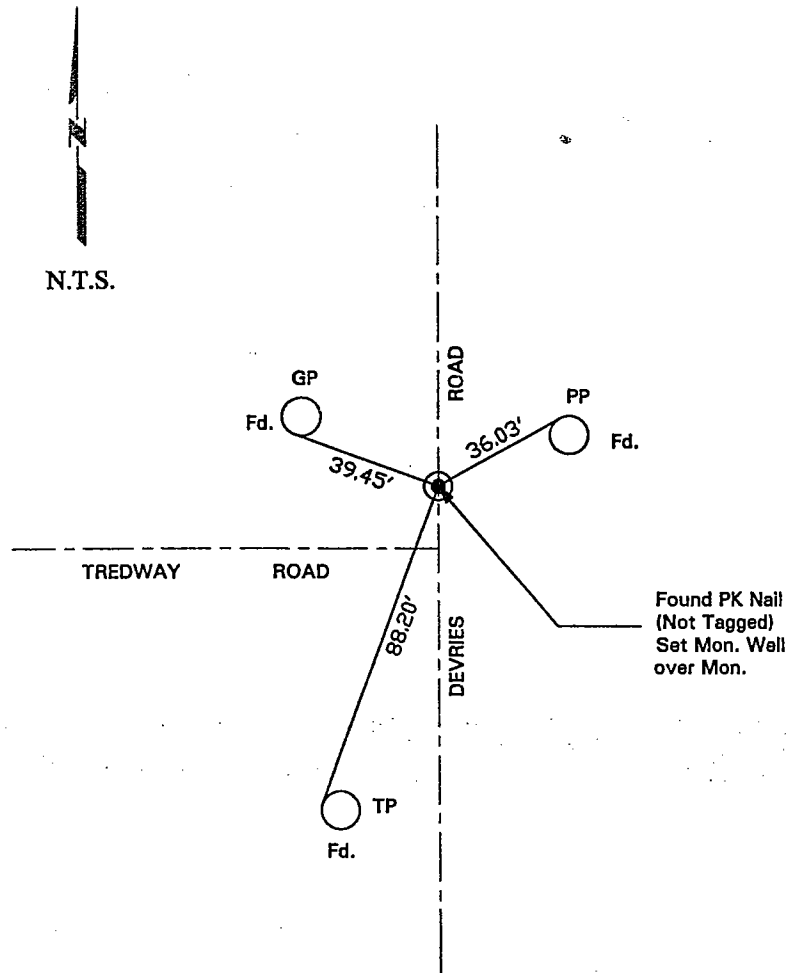
Signed [Signature] R.C.E. No. 28054

Title County Surveyor

County Surveyors Comment _____



(D.D. Sheet No. 14)



"No Attempt Was Made To Verify Monument(s)"

FP=Fence Post

GP=Guy Post

JP=Joint Pole

PP=Power Pole

SP=Service Pole

TP=Telephone Pole

N.T.S.=Not To Scale

Fd.=Conc. Nails with Brass Washers Stamped "S.J. Co.", unless otherwise noted