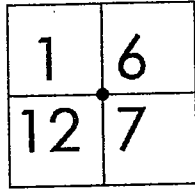


CORNER RECORD

Document Number 01-1  
County of San Joaquin, California

City of \_\_\_\_\_

Brief Legal Description SE CORNER OF SECTION 1, T.3N.,R.5E.



T.3N.,R.5E T.3N.,R.6E

CORNER TYPE

Government Corner  Control   
 Meander  Property   
 Rancho  Other   
 Date of Survey NOVEMBER 30, 2000

COORDINATES (Optional)

N. \_\_\_\_\_  
 E. \_\_\_\_\_  
 Zone \_\_\_\_\_ NAD27  NAD83   
 NAD83 Epoch \_\_\_\_\_  
 Elev. \_\_\_\_\_  
 Vert. Datum: NGVD29  NAVD88   
 Meas. Units: Metric  Imperial

Corner - Left as found  Found and tagged  Established  Reestablished  Rebuilt

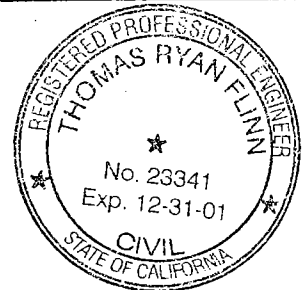
Identification and type of corner found: Evidence used to identify or procedure used to establish or reestablish the corner  
FOUND BOLT/WASHER, STAMPED "LS-2239". CONFIRMED LOCATION PER SWINGS ON CR-00-218. SEE SKETCH ON BACKSIDE

A description of the physical condition of the monument as found and as set or reset:  
FOUND MONUMENT IN GOOD CONDITION. SEE SKETCH ON BACKSIDE

SURVEYOR'S STATEMENT

This Corner Record was prepared by me or under my direction in conformance with  
 the Land Surveyors' Act on 1-2, 2001.

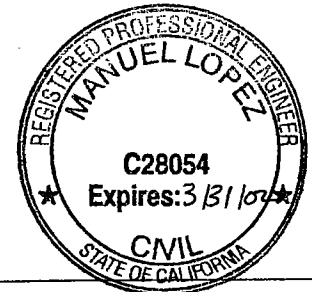
Signed \_\_\_\_\_ L.S. or R.C.E. Number 23341



COUNTY SURVEYOR'S STATEMENT

This Corner Record was received JANUARY 5, 2001 and examined  
 and filed 1/7, 2001.

Signed Manuel Lopez R.C.E. No. 28054  
 Title \_\_\_\_\_ County Surveyor

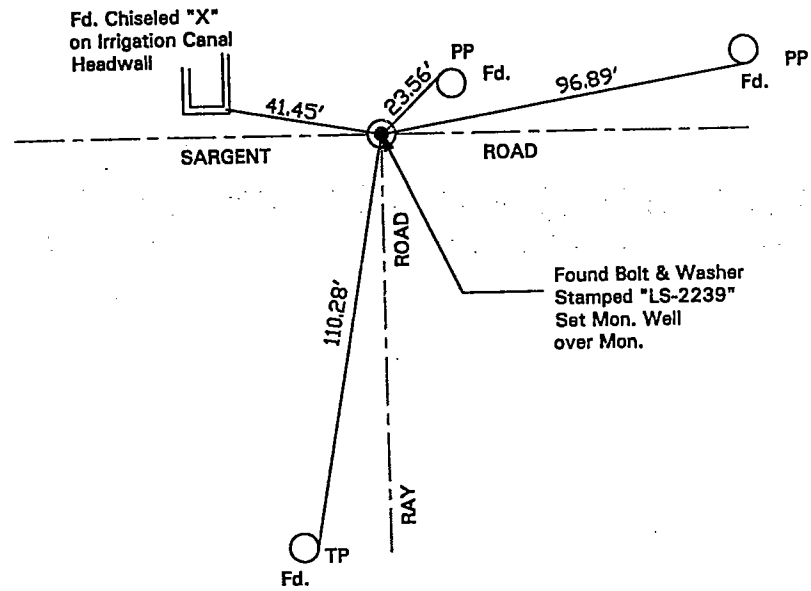


County Surveyors Comment \_\_\_\_\_

(D.D. Sheet No. 86 & 14)



N.T.S.



"No Attempt Was Made To Verify Monument(s)"

FP=Fence Post

GP=Guy Post

JP=Joint Pole

PP=Power Pole

SP=Service Pole

TP=Telephone Pole

N.T.S.=Not To Scale

Fd.=Conc. Nails with Brass Washers Stamped "S.J. Co. Pub. Works", unless otherwise noted