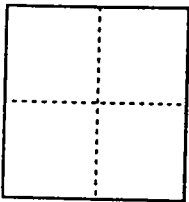


CORNER RECORD

City of \_\_\_\_\_

Document Number 00-298  
County of San Joaquin, California

Brief Legal Description PARCEL "B" OF PARCEL MAP 7-158, SAN JOAQUIN COUNTY RECORDS.



CORNER TYPE

- Government Corner  Control
- Meander  Property
- Rancho  Other

Date of Survey AUGUST 30, 2000

COORDINATES (Optional)

N. \_\_\_\_\_  
 E. \_\_\_\_\_  
 Zone \_\_\_\_\_ NAD27  NAD83   
 NAD83 Epoch \_\_\_\_\_  
 Elev. \_\_\_\_\_  
 Vert. Datum: NGVD29  NAVD88   
 Meas. Units: Metric  Imperial

Corner - Left as found  Found and tagged  Established  Reestablished  Rebuilt

Identification and type of corner found: Evidence used to identify or procedure used to establish or reestablish the corner:  
FOUND SUFFICIENT RECORD CORNERS SHOWN ON BOOK 2 OF PARCEL MAPS, PAGE 16 AND BOOK 7 OF PARCEL MAPS, PAGE 158 TO REESTABLISH THE MISSING CORNERS.

A description of the physical condition of the monument as found and as set or reset:  
SET 3/4" DIAMETER X 30" LONG IRON PIN TAGGED R.C.E. 14269 AT THE LOCATION NOTED ON THE CORNER RECORD.

SURVEYOR'S STATEMENT

This Corner Record was prepared by me or under my direction in conformance with the Land Surveyors' Act on SEPTEMBER 22, 2000.

Signed C. Change Wong R.C.E. Number 14269

COUNTY SURVEYOR'S STATEMENT

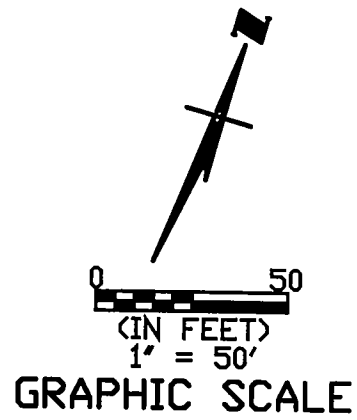
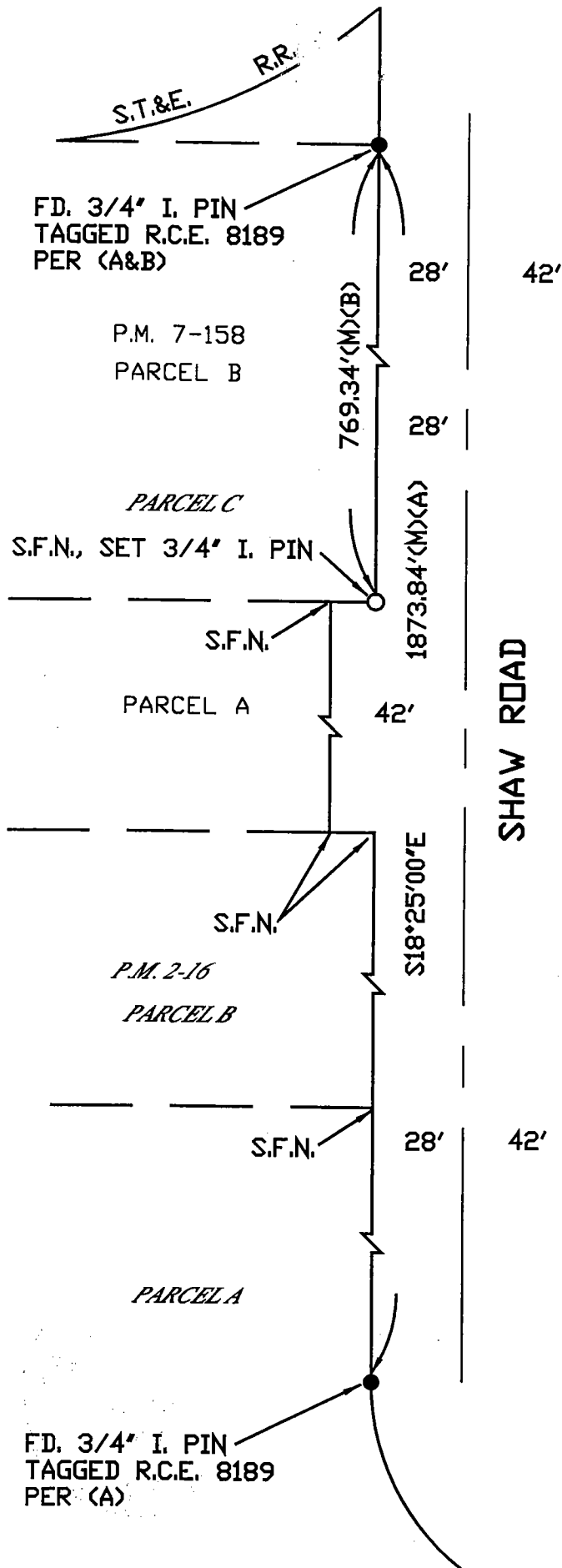
This Corner Record was received NOVEMBER 6, 2000, and examined and filed NOVEMBER 9, 2000.

Signed Manuel Lopez R.C.E. No. 28054  
Title County Surveyor

County Surveyor's Comment \_\_\_\_\_

(D.D. Sheet No. 32 )





**LEGEND:**

- FOUND AS NOTED
- SET 3/4" I. PIN TAGGED  
R.C.E. 14269
- M.&P. DENOTES MAPS & PLATS
- P.M. DENOTES PARCEL MAP
- R.S. DENOTES RECORD OF SURVEY

**REFERENCES:**

- (A) P.M. 2-16, S.J. CO. RECORDS
- (B) P.M. 7-158, S.J. CO. RECORDS



**CORNER RECORD**  
**WONG ENGINEERS, INC.**  
 PLANNING ENGINEERING SURVEYING  
 STOCKTON, CALIFORNIA  
 SEPTEMBER 2000