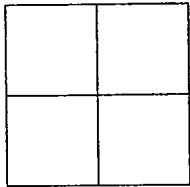


CORNER RECORD

Document Number 00-288
County of San Joaquin, California

City of _____

Brief Legal Description INTERSECTION OF LAMMERS ROAD AND PHILIP MARTIN COURT



CORNER TYPE

- Government Corner Control
- Meander Property
- Rancho Other

Date of Survey AUGUST 10, 2000

COORDINATES (Optional)

N. _____
 E. _____
 Zone _____ NAD27 NAD83
 NAD83 Epoch _____
 Elev. _____
 Vert. Datum: NGVD29 NAVD88
 Meas. Units: Metric Imperial

Corner - Left as found Found and tagged Established Reestablished Rebuilt

Identification and type of corner found: Evidence used to identify or procedure used to establish or reestablish the corner
REESTABLISHED LOCATION OF FOUND 3/4" PIPE STAMPED LS 4450 PER SWINGS IN FB 692, pp 15.

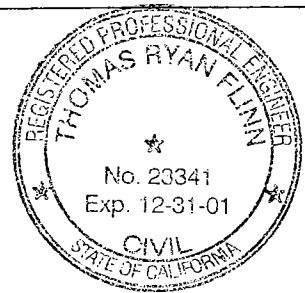
SEE SKETCH ON BACKSIDE

A description of the physical condition of the monument as found and as set or reset:
SET 3/4" x 30" IRON PIN AND PLACED MON. WELL OVER MON. SEE SKETCH ON BACKSIDE

SURVEYOR'S STATEMENT

This Corner Record was prepared by me or under my direction in conformance with the Land Surveyors' Act on Sep 22, 2000.

Signed [Signature] L.S. or R.C.E. Number 23341



COUNTY SURVEYOR'S STATEMENT

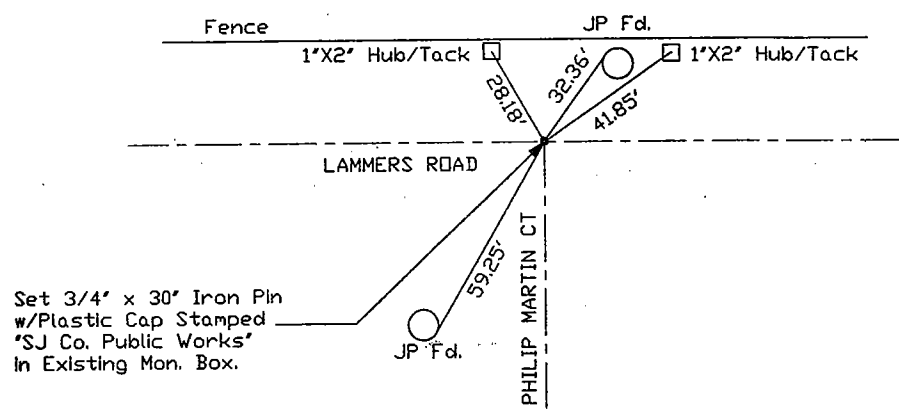
This Corner Record was received SEPTEMBER 29, 2000 and examined and filed OCTOBER 3, 2000.

Signed [Signature] R.C.E. No. 28054
Title County Surveyor

County Surveyor's Comment _____

(D.D. Sheet No. 53A)


 N.T.S.



"No Attempt Was Made To Verify Monument(s)"

- FP=Fence Post
- GP=Guy Post
- JP=Joint Pole
- PP=Power Pole
- SP=Service Pole
- TP=Telephone Pole
- N.T.S.=Not To Scale
- Fd.=Conc. Nails with Brass Washers Stamped "S.J. Co.", unless otherwise noted