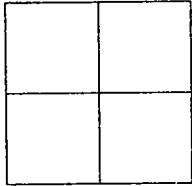


CORNER RECORD

Document Number 00-285  
County of San Joaquin, California

City of \_\_\_\_\_

Brief Legal Description ON VAN ALLEN ROAD 50± NORTH OF RIVER ROAD



CORNER TYPE

Government Corner  Control   
Meander  Property   
Rancho  Other   
Date of Survey SEPTEMBER 7, 2000

COORDINATES (Optional)

N. \_\_\_\_\_  
E. \_\_\_\_\_  
Zone \_\_\_\_\_ NAD27  NAD83   
NAD83 Epoch \_\_\_\_\_  
Elev. \_\_\_\_\_  
Vert. Datum: NGVD29  NAVD88   
Meas. Units: Metric  Imperial

Corner - Left as found  Found and tagged  Established  Reestablished  Rebuilt

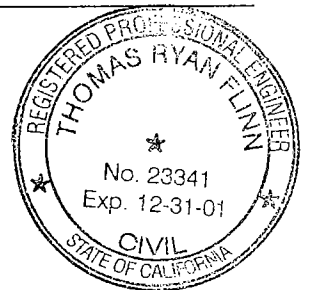
Identification and type of corner found: Evidence used to identify or procedure used to establish or reestablish the corner  
FOUND PK NAIL AND SHINER. CONFIRMED LOCATION PER SWINGS ON CR-00-251. SEE SKETCH ON BACKSIDE

A description of the physical condition of the monument as found and as set or reset:  
FOUND MONUMENT IN GOOD CONDITION. SEE SKETCH ON BACKSIDE

SURVEYOR'S STATEMENT

This Corner Record was prepared by me or under my direction in conformance with  
the Land Surveyors' Act on 9-15-, 2000.

Signed [Signature] L.S. or R.C.E. Number 23341



COUNTY SURVEYOR'S STATEMENT

This Corner Record was received 9-18-, 2000 and examined  
and filed 9-20-, 2000.

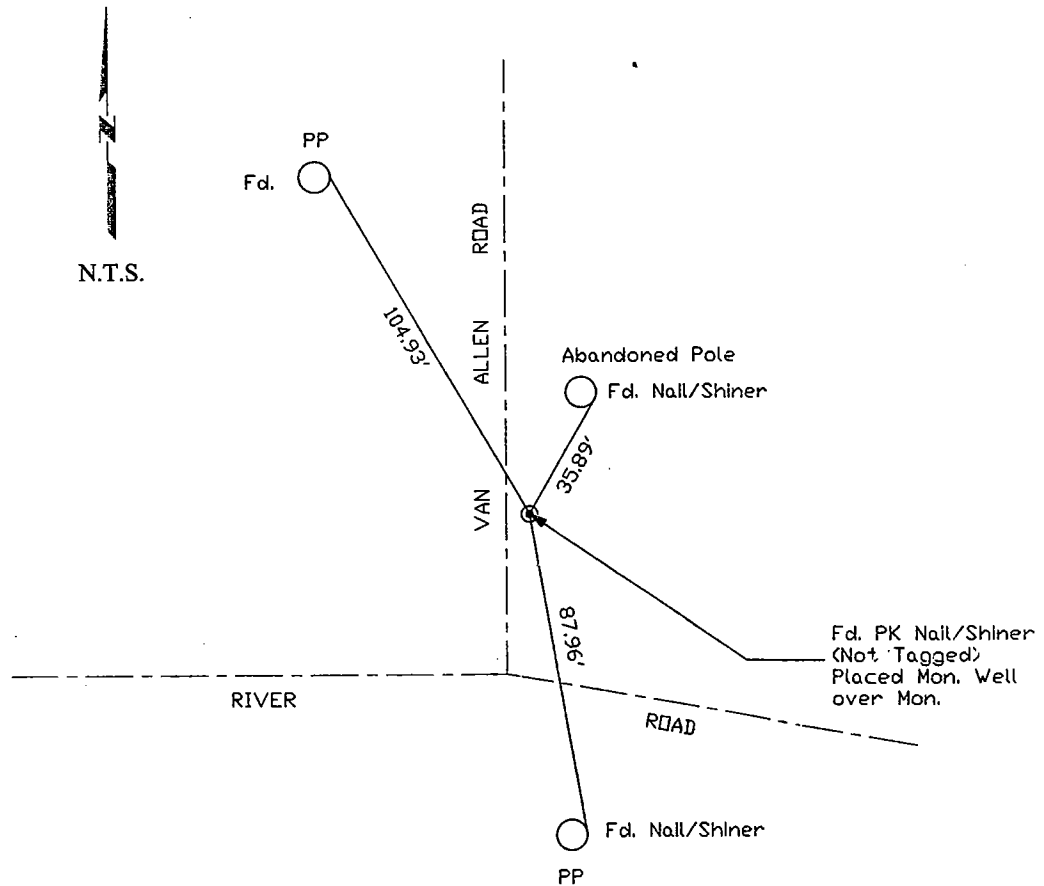
Signed [Signature] R.C.E. No. 28054

Title County Surveyor



County Surveyors Comment \_\_\_\_\_

(D.D. Sheet No. 61)



"No Attempt Was Made To Verify Monument(s)"

FP=Fence Post

GP=Guy Post

JP=Joint Pole

PP=Power Pole

SP=Service Pole

TP=Telephone Pole

N.T.S.=Not To Scale

Fd.=Conc. Nails with Brass Washers Stamped "S.J. Co.", unless otherwise noted