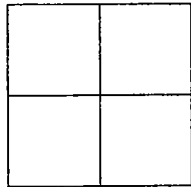


CORNER RECORD

Document Number 00-284
County of San Joaquin, California

City of _____

Brief Legal Description ON RIVER ROAD 1275± WEST OF MCHENRY AVENUE



CORNER TYPE

- Government Corner Control
- Meander Property
- Rancho Other

Date of Survey SEPTEMBER 7, 2000

COORDINATES (Optional)

N. _____
 E. _____
 Zone _____ NAD27 NAD83
 NAD83 Epoch _____
 Elev. _____
 Vert. Datum: NGVD29 NAVD88
 Meas. Units: Metric Imperial

Corner - Left as found Found and tagged Established Reestablished Rebuilt

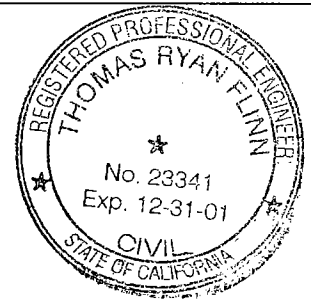
Identification and type of corner found: Evidence used to identify or procedure used to establish or reestablish the corner
FOUND PIN AND WASHER. CONFIRMED LOCATION PER SWINGS ON CR-00-252. SEE SKETCH ON BACKSIDE

A description of the physical condition of the monument as found and as set or reset:
FOUND MONUMENT IN GOOD CONDITION. SEE SKETCH ON BACKSIDE

SURVEYOR'S STATEMENT

This Corner Record was prepared by me or under my direction in conformance with the Land Surveyors' Act on 9-15-, 2000.

Signed _____ L.S. or R.C.E. Number 23341



COUNTY SURVEYOR'S STATEMENT

This Corner Record was received 9-18-, 2000 and examined and filed 9-20-, 2000.

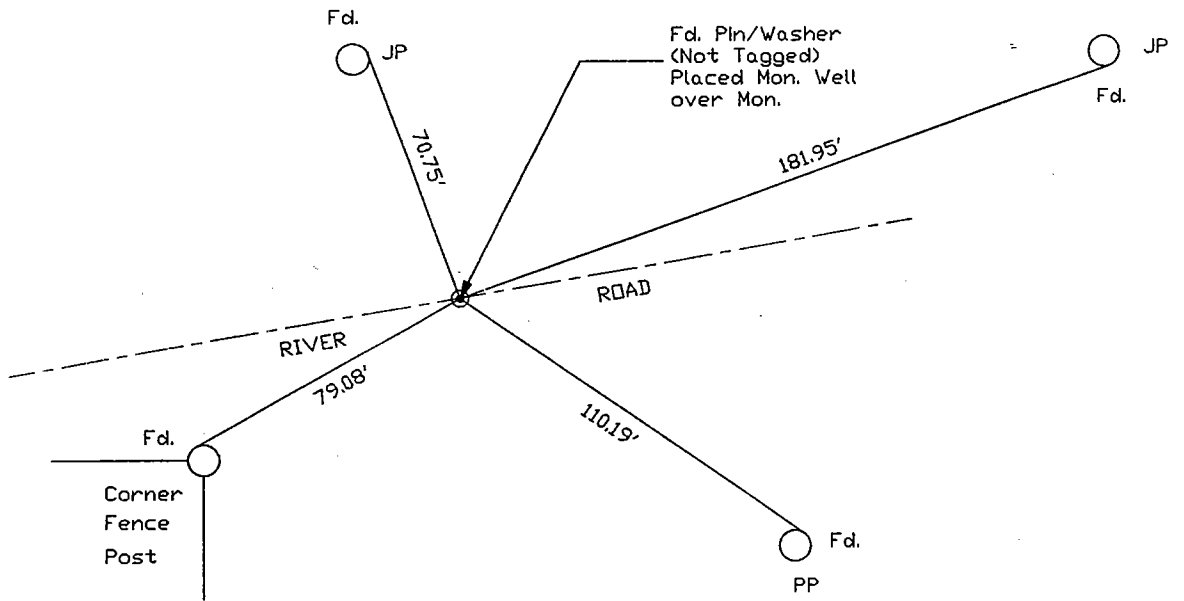
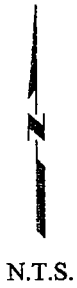
Signed Manuel Lopez R.C.E. No. 28054

Title County Surveyor



County Surveyors Comment _____

(D.D. Sheet No. 62)



"No Attempt Was Made To Verify Monument(s)"

FP=Fence Post

GP=Guy Post

JP=Joint Pole

PP=Power Pole

SP=Service Pole

TP=Telephone Pole

N.T.S.=Not To Scale

Fd.=Conc. Nails with Brass Washers Stamped "S.J. Co.", unless otherwise noted