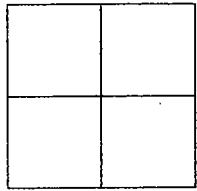


CORNER RECORD

Document Number 00-278
County of San Joaquin, California

City of _____

Brief Legal Description ON RIVER ROAD 1449± EAST OF MCHENRY AVENUE



CORNER TYPE

Government Corner Control
Meander Property
Rancho Other
Date of Survey SEPTEMBER 7, 2000

COORDINATES (Optional)

N. _____
E. _____
Zone _____ NAD27 NAD83
NAD83 Epoch _____
Elev. _____
Vert. Datum: NGVD29 NAVD88
Meas. Units: Metric Imperial

Corner - Left as found Found and tagged Established Reestablished Rebuilt

Identification and type of corner found: Evidence used to identify or procedure used to establish or reestablish the corner
FOUND PIN AND WASHER. CONFIRMED LOCATION PER SWINGS ON CR-271, SEE SKETCH ON BACKSIDE

A description of the physical condition of the monument as found and as set or reset:
FOUND MONUMENT IN GOOD CONDITION. SEE SKETCH ON BACKSIDE

SURVEYOR'S STATEMENT

This Corner Record was prepared by me or under my direction in conformance with the Land Surveyors' Act on 9-15-, 2000.

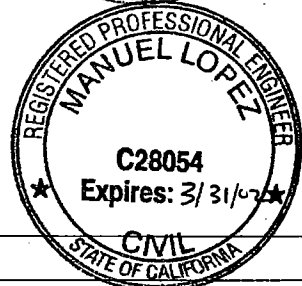
Signed _____ L.S. or R.C.E. Number 23341

COUNTY SURVEYOR'S STATEMENT

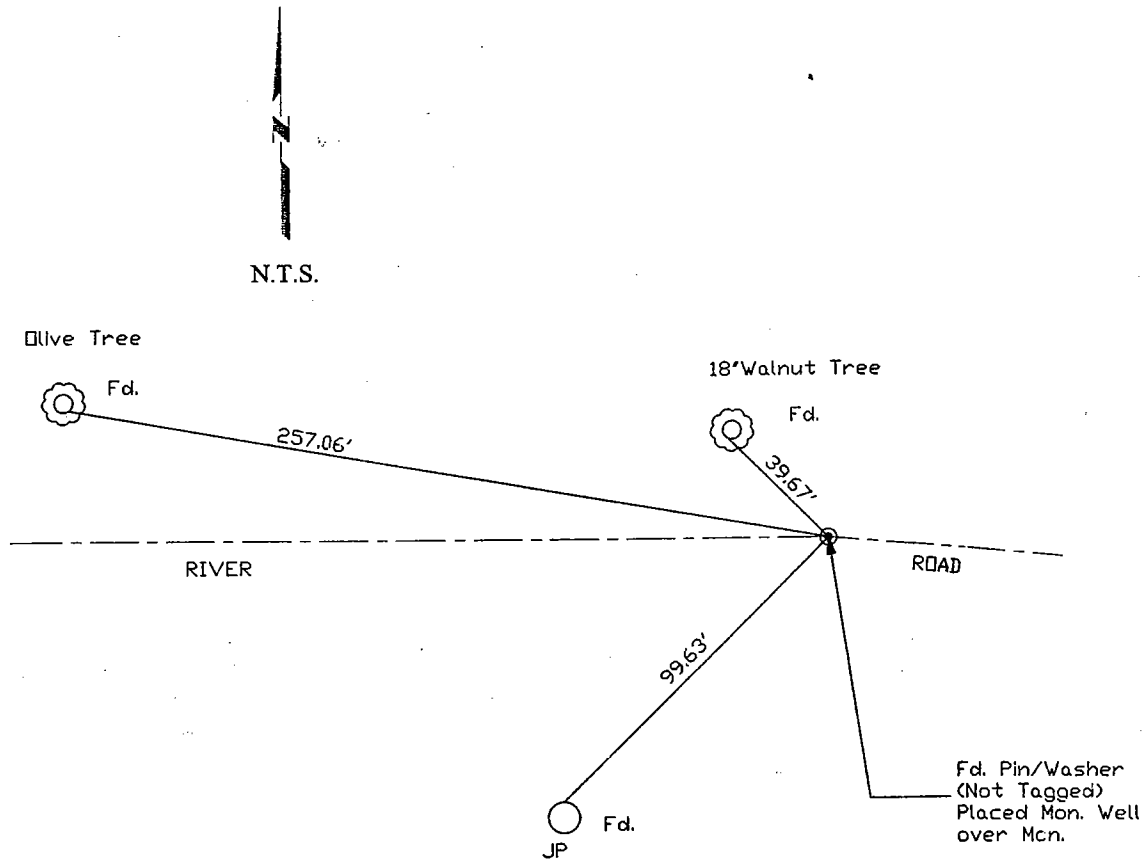
This Corner Record was received 9-18-, 2000 and examined and filed 9-20-, 2000.

Signed Manuel Lopez R.C.E. No. 28054
Title _____ County Surveyor

County Surveyors Comment _____



(D.D. Sheet No. 62)



"No Attempt Was Made To Verify Monument(s)"

FP=Fence Post

GP=Guy Post

JP=Joint Pole

PP=Power Pole

SP=Service Pole

TP=Telephone Pole

N.T.S.=Not To Scale

Fd.=Conc. Nails with Brass Washers Stamped "S.J. Co.", unless otherwise noted