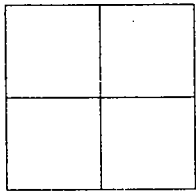


CORNER RECORD

Document Number 00-275
 County of San Joaquin, California

City of _____

Brief Legal Description ON NORTH RIPON ROAD 1333'± NORTH OF RIVER ROAD



CORNER TYPE

Government Corner Control
 Meander Property
 Rancho Other
 Date of Survey AUGUST 10, 2000

COORDINATES (Optional)

N. _____
 E. _____
 Zone _____ NAD27 NAD83
 NAD83 Epoch _____
 Elev. _____
 Vert. Datum: NGVD29 NAVD88
 Meas. Units: Metric Imperial

Corner - Left as found Found and tagged Established Reestablished Rebuilt

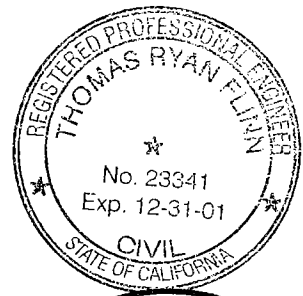
Identification and type of corner found: Evidence used to identify or procedure used to establish or reestablish the corner
FOUND RR SPIKE (NOT TAGGED). CONFIRMED LOCATION PER SWINGS ON CR-00-245, SEE SKETCH ON BACKSIDE.

A description of the physical condition of the monument as found and as set or reset:
FOUND MONUMENT IN GOOD CONDITION. SEE SKETCH ON BACKSIDE.

SURVEYOR'S STATEMENT

This Corner Record was prepared by me or under my direction in conformance with
 the Land Surveyors' Act on Sep 5, 2000.

Signed _____ L.S. or R.C.E. Number 23341

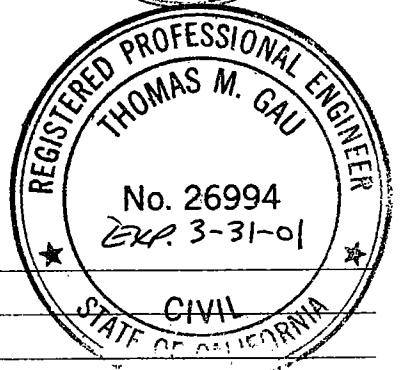


COUNTY SURVEYOR'S STATEMENT

This Corner Record was received SEP. 6, 2000 and examined
 and filed SEP. 12, 2000.

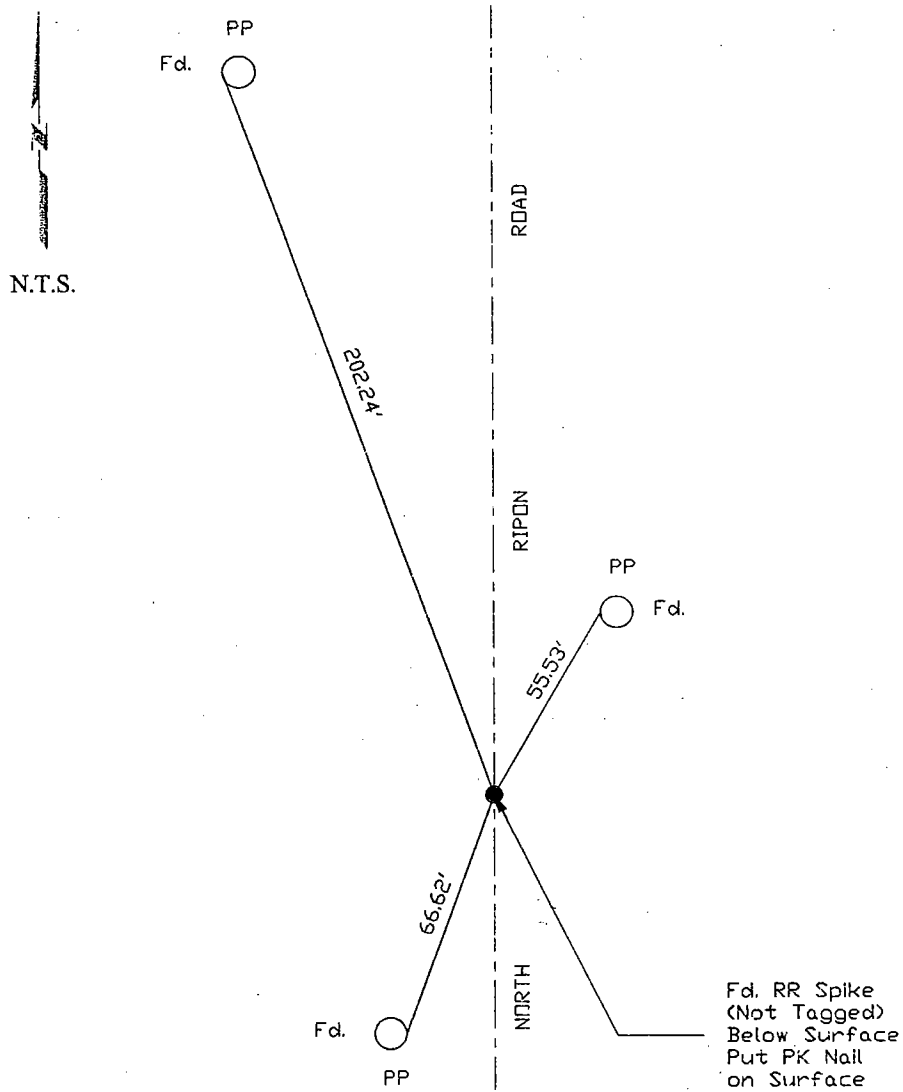
Signed Thomas M. Gau R.C.E. No. 28054

FOR Title _____ County Surveyor



County Surveyors Comment _____

(D.D. Sheet No. 60)



"No Attempt Was Made To Verify Monument(s)"

FP=Fence Post

GP=Guy Post

JP=Joint Pole

PP=Power Pole

SP=Service Pole

TP=Telephone Pole

N.T.S.=Not To Scale

Fd.=Conc. Nails with Brass Washers Stamped "S.J. Co.", unless otherwise noted