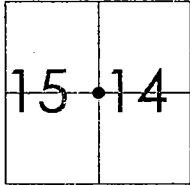


CORNER RECORD

Document Number 00-268
County of San Joaquin, California

City of _____

Brief Legal Description SW CORNER OF NW QUARTER OF SECTION 14, T.3N.,R.8E.



T.3N.,R.8E

CORNER TYPE

- Government Corner Control
- Meander Property
- Rancho Other

Date of Survey JULY 18, 2000

COORDINATES (Optional)

N. _____
 E. _____
 Zone _____ NAD27 NAD83
 NAD83 Epoch _____
 Elev. _____
 Vert. Datum: NGVD29 NAVD88
 Meas. Units: Metric Imperial

Corner - Left as found Found and tagged Established Reestablished Rebuilt

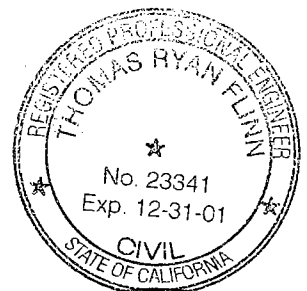
Identification and type of corner found: Evidence used to identify or procedure used to establish or reestablish the corner
REESTABLISHED LOCATION OF FD. PK NAIL PER SWINGS ON CR-00-65. SEE SKETCH ON BACKSIDE

A description of the physical condition of the monument as found and as set or reset: _____
SET 3/4" x 30" IRON PIN AND PLACED MON. WELL OVER MON. SEE SKETCH ON BACKSIDE

SURVEYOR'S STATEMENT

This Corner Record was prepared by me or under my direction in conformance with the Land Surveyors' Act on Sept 1, 2000.

Signed _____ L.S. or R.C.E. Number 23341



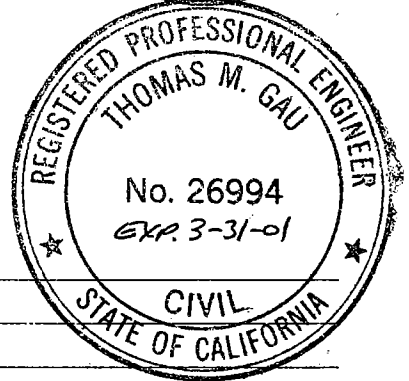
COUNTY SURVEYOR'S STATEMENT

This Corner Record was received SEP. 6, 2000 and examined and filed SEPT. 12, 2000.

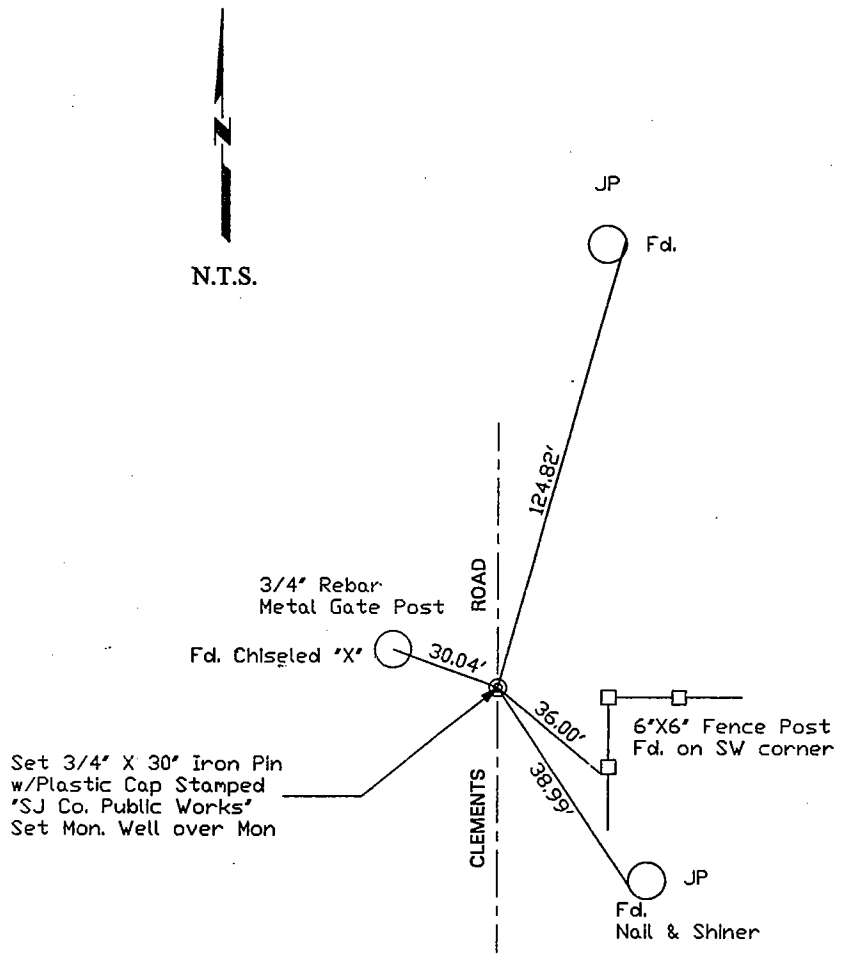
Signed Thomas M. Gau R.C.E. No. 28054

FSR Title _____ County Surveyor

County Surveyors Comment _____



(D.D. Sheet No. 18 & 19)



"No Attempt Was Made To Verify Monument(s)"

- FP=Fence Post
- GP=Guy Post
- JP=Joint Pole
- PP=Power Pole
- SP=Service Pole
- TP=Telephone Pole
- N.T.S.=Not To Scale
- Fd.=Conc. Nails with Brass Washers Stamped "S.J. Co.", unless otherwise noted