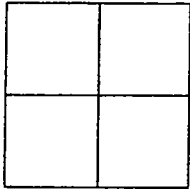


CORNER RECORD

Document Number 00-267

City of MANTECA County of SAN JOAQUIN, California

Brief Legal Description BOOK 33, M&P, PAGE 86, SAN JOAQUIN COUNTY RECORDS.



CORNER TYPE

Government Corner Control
Meander Property
Rancho Other
Date of Survey 1-8-99

COORDINATES (Optional)

N. _____
E. _____
Zone _____ NAD27 NAD83
NAD83 Epoch _____
Elev. _____
Vert. Datum: NGVD29 NAVD88
Meas. Units: Metric Imperial

Corner - Left as found Found and tagged Established Reestablished Rebuilt

Identification and type of corner found: Evidence used to identify or procedure used to establish or reestablished the corner:
3/4" REBAR TAGGED RCE 14269 IN MONUMENT WELL AT THE INTERSECTION OF TAPPAN
PLACE & ALAMEDA STREET WAS DESTROYED DUE TO THE RECONSTRUCTION OF THE ROADWAY.
MONUMENT WAS REESTABLISHED USING THE SWING TIES AS SHOWN ON CORNER RECORD 00-266
PREPARED PRIOR TO THE MONUMENT BEING DESTROYED.

A description of the physical condition of the monument as found and as set or reset: _____
SET 3/4"x30" IRON PIPE TAGGED LS 6953 IN MONUMENT WELL.

SURVEYOR'S STATEMENT

This Corner Record was prepared by me or under my direction in conformance with the Land Surveyors' Act on JANUARY 8, 1999.

Signed [Signature] L.S. Number LS 6953



COUNTY SURVEYOR'S STATEMENT

This Corner Record was received AUGUST 29, 2000 and examined and filed AUGUST 30, 2000.

Signed [Signature] R.C.E. No. 28054

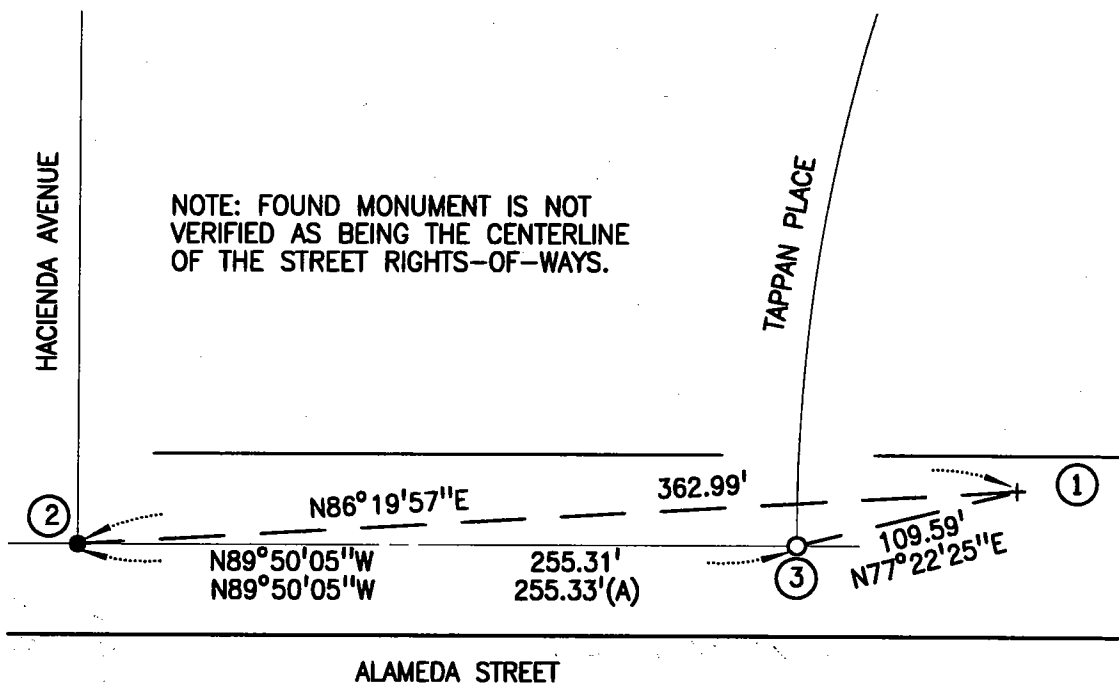
Title County Surveyor



County Surveyors Comment THIS CORNER RECORD DOES NOT COMPLY WITH BOARD RULE 464(C) REGARDING DATE OF SUBMITTAL.



NOT TO SCALE



NOTE: FOUND MONUMENT IS NOT VERIFIED AS BEING THE CENTERLINE OF THE STREET RIGHTS-OF-WAYS.

LEGEND

BEARINGS & DISTANCES ARE MEASURED UNLESS OTHERWISE INDICATED.

(A) MAPS & PLATS, BK. 33, PG. 86, SJCR

① FD. CHISELED "+" IN SIDEWALK

② FD. 3/4" REBAR TAGGED RCE 14269 IN MON. WELL

③ SET 3/4"x30" IRON PIPE TAGGED LS 6953 IN MON. WELL