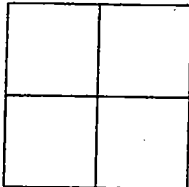


CORNER RECORD

Document Number 00-266

City of MANTECA County of SAN JOAQUIN, California

Brief Legal Description BOOK 33, M&P, PAGE 86, SAN JOAQUIN COUNTY RECORDS.



CORNER TYPE

Government Corner Control
Meander Property
Rancho Other
Date of Survey 10-23-98

COORDINATES (Optional)

N. _____
E. _____
Zone _____ NAD27 NAD83
NAD83 Epoch _____
Elev. _____
Vert. Datum: NGVD29 NAVD88
Meas. Units: Metric Imperial

Corner - Left as found Found and tagged Established Reestablished Rebuilt

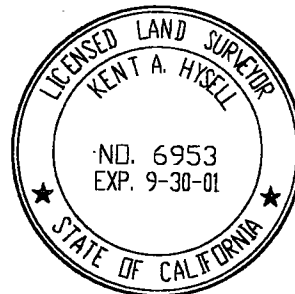
Identification and type of corner found: Evidence used to identify or procedure used to establish or reestablished the corner:
FOUND 3/4" REBAR TAGGED RCE 14269 IN MONUMENT WELL AT THE INTERSECTION OF TAPPAN PLACE AND ALAMEDA STREET. MONUMENT WAS LOCATED BASED ON THE POSITION INDICATED BY MAP FILED FOR RECORD IN BOOK 33, M&P, PAGE 86, SAN JOAQUIN COUNTY RECORDS, PRIOR TO BEING DESTROYED.

A description of the physical condition of the monument as found and as set or reset:
THE MONUMENT WILL BE DESTROYED DUE TO THE RECONSTRUCTION OF THE STREET BY THE ALAMEDA STREET RECONSTRUCTION PROJECT THROUGH THE CITY OF MANTECA.

SURVEYOR'S STATEMENT

This Corner Record was prepared by me or under my direction in conformance with the Land Surveyors' Act on OCTOBER 23, 1998.

Signed [Signature] L.S. Number LS 6953



COUNTY SURVEYOR'S STATEMENT

This Corner Record was received AUGUST 29, 2000 and examined and filed AUGUST 30, 2000.

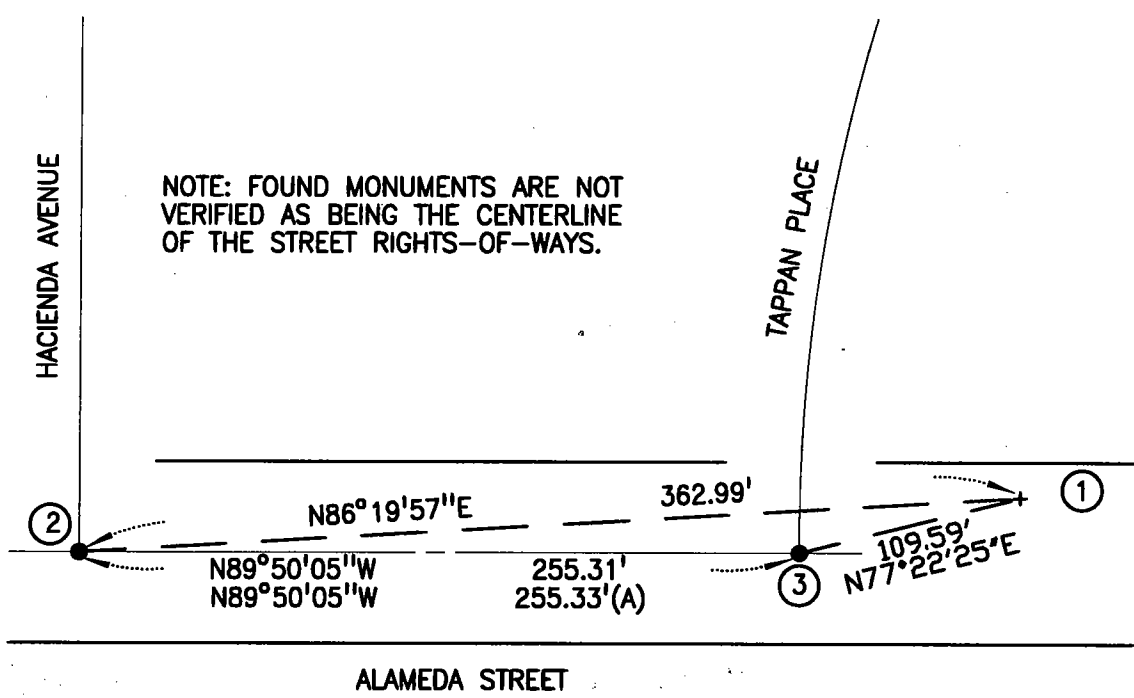
Signed [Signature] R.C.E. No. 28054
Title County Surveyor



County Surveyors Comment THIS CORNER RECORD DOES NOT COMPLY WITH BOARD RULE 464(C) REGARDING DATE OF SUBMITTAL.



NOT TO SCALE



LEGEND

BEARINGS & DISTANCES ARE MEASURED UNLESS OTHERWISE INDICATED.

(A) MAPS & PLATS, BK. 33, PG. 86, SJCR

- ① SET CHISELED "+" IN SIDEWALK
- ② FD. 3/4" REBAR TAGGED RCE 14269 IN MON. WELL.
- ③ FD. 3/4" REBAR TAGGED RCE 14269 IN MON. WELL.