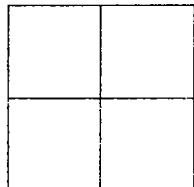


CORNER RECORD

Document Number 00-252
County of San Joaquin, California

City of _____

Brief Legal Description ON RIVER ROAD 1275± WEST OF MCHENRY AVENUE



CORNER TYPE

- Government Corner Control
- Meander Property
- Rancho Other

Date of Survey JULY 17, 2000

COORDINATES (Optional)

N. _____
 E. _____
 Zone _____ NAD27 NAD83
 NAD83 Epoch _____
 Elev. _____
 Vert. Datum: NGVD29 NAVD88
 Meas. Units: Metric Imperial

Corner - Left as found Found and tagged Established Reestablished Rebuilt

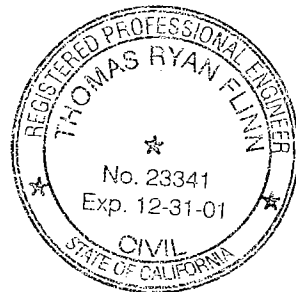
Identification and type of corner found: Evidence used to identify or procedure used to establish or reestablish the corner
SEE SKETCH ON BACKSIDE

A description of the physical condition of the monument as found and as set or reset:
FOUND MONUMENT IN GOOD CONDITION. SEE SKETCH ON BACKSIDE

SURVEYOR'S STATEMENT

This Corner Record was prepared by me or under my direction in conformance with the Land Surveyors' Act on Aug 28, 2000.

Signed _____ L.S. or R.C.E. Number 23341



COUNTY SURVEYOR'S STATEMENT

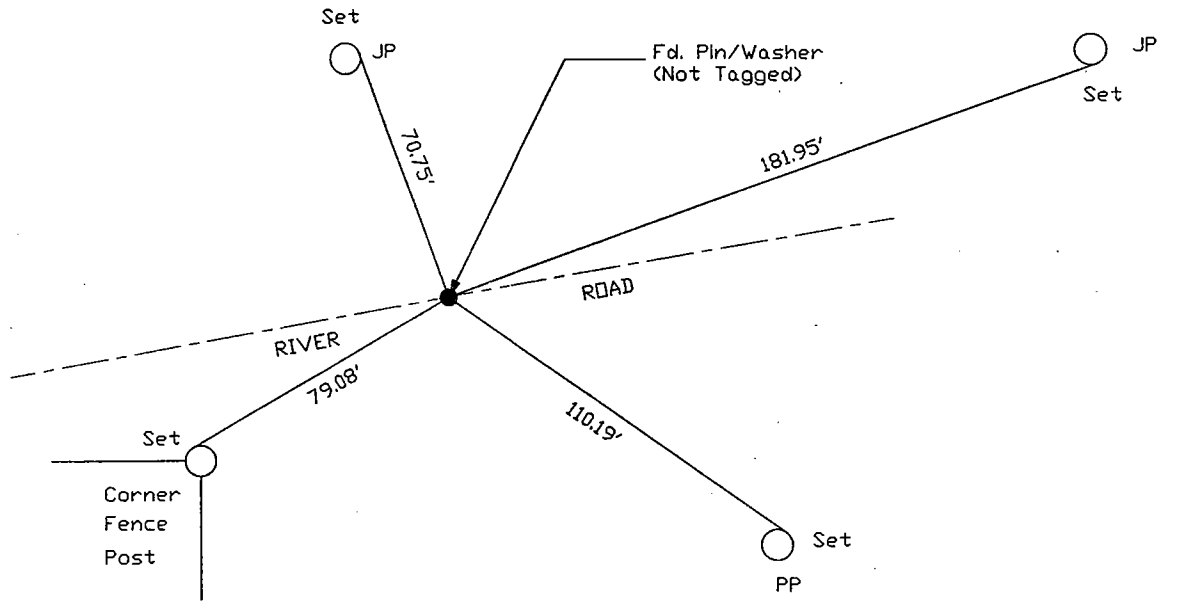
This Corner Record was received AUGUST 29, 2000 and examined and filed AUGUST 30, 2000.

Signed Manuel Lopez R.C.E. No. 28054
Title _____ County Surveyor



County Surveyors Comment _____

N.T.S.



"No Attempt Was Made To Verify Monument(s)"

FP=Fence Post

GP=Guy Post

JP=Joint Pole

PP=Power Pole

SP=Service Pole

TP=Telephone Pole

N.T.S.=Not To Scale

Set=Conc. Nails with Brass Washers Stamped "S.J. Co.", unless otherwise noted