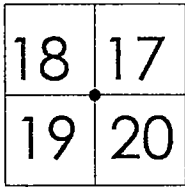


CORNER RECORD

Document Number 00-247  
County of San Joaquin, California

City of \_\_\_\_\_

Brief Legal Description NW CORNER OF SECTION 20, T.2S.,R.8E.



T.2S.,R.8E

CORNER TYPE

- Government Corner  Control   
 Meander  Property   
 Rancho  Other

Date of Survey JULY 26, 2000

COORDINATES (Optional)

N. \_\_\_\_\_  
 E. \_\_\_\_\_  
 Zone \_\_\_\_\_ NAD27  NAD83   
 NAD83 Epoch \_\_\_\_\_  
 Elev. \_\_\_\_\_  
 Vert. Datum: NGVD29  NAVD88   
 Meas. Units: Metric  Imperial

Corner - Left as found  Found and tagged  Established  Reestablished  Rebuilt

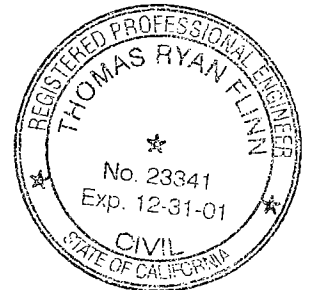
Identification and type of corner found: Evidence used to identify or procedure used to establish or reestablish the corner  
SEE SKETCH ON BACKSIDE

A description of the physical condition of the monument as found and as set or reset:  
FOUND MONUMENT IN GOOD CONDITION. SEE SKETCH ON BACKSIDE

SURVEYOR'S STATEMENT

This Corner Record was prepared by me or under my direction in conformance with the Land Surveyors' Act on Aug 28, 2000.

Signed [Signature] L.S. or R.C.E. Number 23341



COUNTY SURVEYOR'S STATEMENT

This Corner Record was received AUGUST 29, 2000 and examined and filed AUGUST 30, 2000.

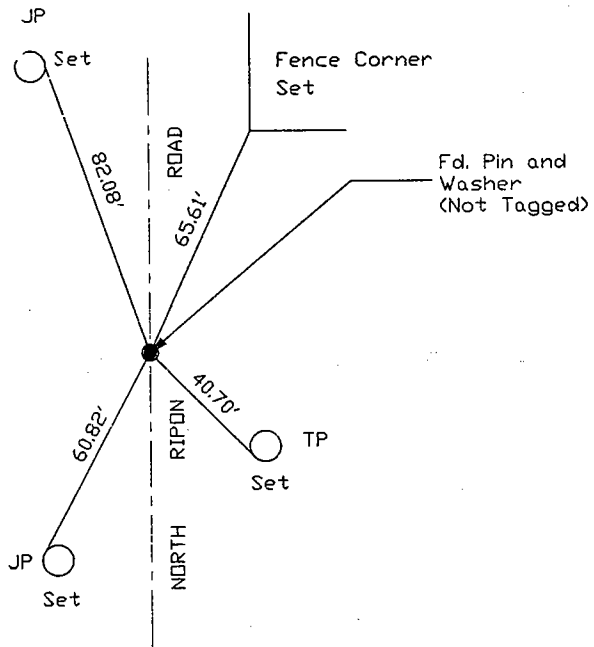
Signed [Signature] R.C.E. No. 28054  
Title County Surveyor



County Surveyors Comment \_\_\_\_\_

(D.D. Sheet No. 60)

N.T.S.



"No Attempt Was Made To Verify Monument(s)"

FP=Fence Post

GP=Guy Post

JP=Joint Pole

PP=Power Pole

SP=Service Pole

TP=Telephone Pole

N.T.S.=Not To Scale

Set=Conc. Nails with Brass Washers Stamped "S.J. Co.", unless otherwise noted