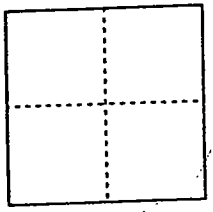


CORNER RECORD

Document Number 00-232
County of San Joaquin, California

City of _____

Brief Legal Description On Live Oak Road 1207'± e/o Furry Road



CORNER TYPE

Government Corner Control
Meander Property
Rancho Other
Date of Survey 6-2-00

COORDINATES (Optional)

N. _____
E. _____
Zone _____ NAD27 NAD83
NAD83 Epoch _____
Elev. _____
Vert. Datum: NGVD29 NAVD88
Meas. Units: Metric Imperial

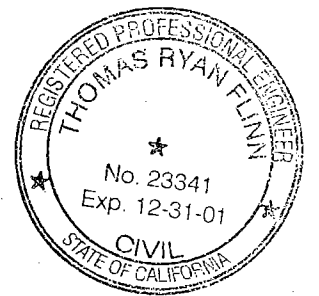
Corner - Left as found Found and tagged Established Reestablished Rebuilt

Identification and type of corner found: Evidence used to identify or procedure used to establish or reestablish the corner:
Reestablished location of Fd. Bolt per swings on CR-00-222
See Sketch on Backside

A description of the physical condition of the monument as found and as set or reset:
Set 3/4" x 30" Iron Pin & Placed Mon Well over Mon
See Sketch on Backside

SURVEYOR'S STATEMENT

This Corner Record was prepared by me or under my direction in conformance with the Land Surveyors' Act on 7/10, 2000.
Signed _____ L.S. or R.C.E. Number 23341

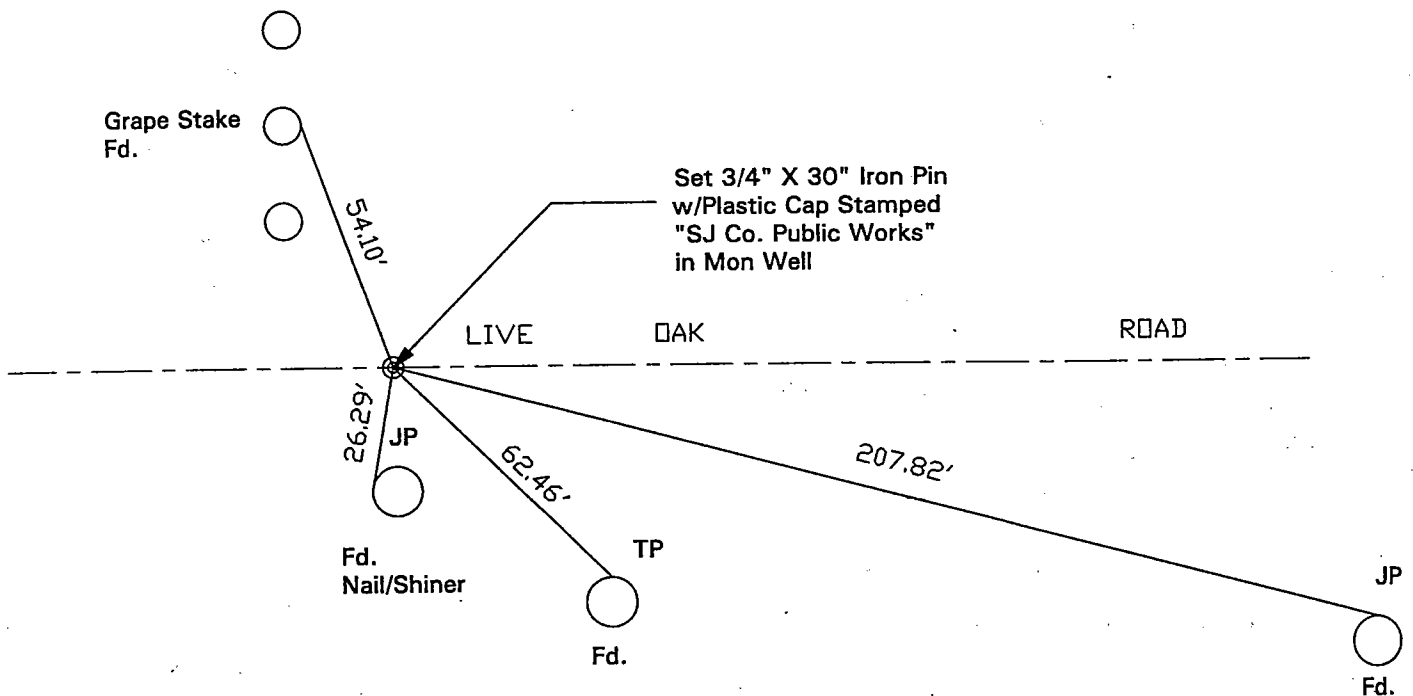


COUNTY SURVEYOR'S STATEMENT

This Corner Record was received JULY 14, 2000 and examined and filed JULY 18, 2000.
Signed Manuel Lopez R.C.E. No. 28054
Title County Surveyor



County Surveyors Comment _____



"No Attempt Was Made To Verify Monument(s)"

FP = Fence Post

GP = Guy Post

JP = Joint Pole

PP = Power Pole

SP = Service Pole

TP = Telephone Pole

N.T.S. = Not To Scale

Fd = Conc. Nails with Brass Washers Stamped "S.J. Co.", unless otherwise noted