

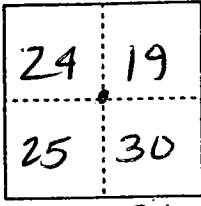
CORNER RECORD

Document Number 00-228  
County of San Joaquin, California

City of \_\_\_\_\_

Brief Legal Description NE corner of Section 25, T.3S, R.5E, M.D.B. & M.

T  
3  
S  
R  
5  
E



T  
3  
S  
R  
5  
E

CORNER TYPE

Government Corner  Control   
 Meander  Property   
 Rancho  Other   
 Date of Survey 4-21-00

COORDINATES (Optional)

N. \_\_\_\_\_  
 E. \_\_\_\_\_  
 Zone \_\_\_\_\_ NAD27  NAD83   
 NAD83-Epoch \_\_\_\_\_  
 Elev. \_\_\_\_\_  
 Vert. Datum: NGVD29  NAVD88   
 Meas. Units: Metric  Imperial

Corner - Left as found  Found and tagged  Established  Reestablished  Rebuilt

Identification and type of corner found: Evidence used to identify or procedure used to establish or reestablish the corner:  
See Sketch on Backside

A description of the physical condition of the monument as found and as set or reset:  
Found Monument in Good Condition  
See Sketch on Backside

SURVEYOR'S STATEMENT

This Corner Record was prepared by me or under my direction in conformance with the Land Surveyors' Act on July 7, 2000.  
 Signed [Signature] L.S. or R.C.E. Number 23341

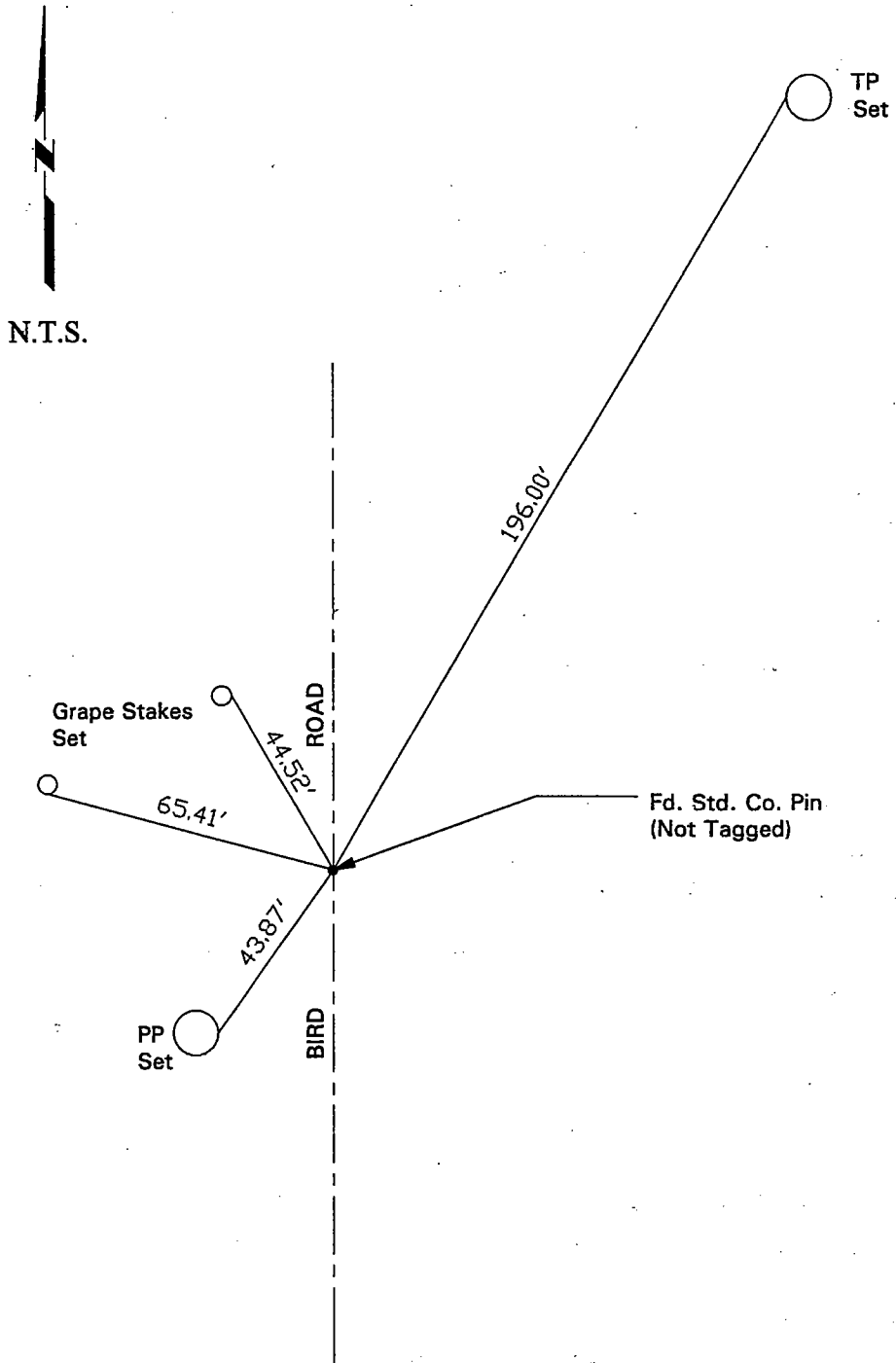


COUNTY SURVEYOR'S STATEMENT

This Corner Record was received JULY 10, 2000 and examined and filed JULY 11, 2000.  
 Signed [Signature] R.C.E. No. 28054  
 Title County Surveyor



County Surveyors Comment \_\_\_\_\_



"No Attempt Was Made To Verify Monument(s)"

FP = Fence Post

GP = Guy Post

JP = Joint Pole

PP = Power Pole

SP = Service Pole

TP = Telephone Pole

N.T.S. = Not To Scale

Set = Conc. Nails with Brass Washers Stamped "S.J. Co.", unless otherwise noted