

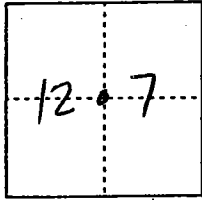
CORNER RECORD

Document Number 00-217
County of San Joaquin, California

City of _____

Brief Legal Description NE CORNER OF SE QUARTER OF SECTION 12
T3NR5E

T
3
N
R
5
E



T
3
N
R
5
E

CORNER TYPE

Government Corner Control
Meander Property
Rancho Other
Date of Survey 4-21-00

COORDINATES (Optional)

N. _____
E. _____
Zone _____ NAD27 NAD83
NAD83 Epoch _____
Elev. _____
Vert. Datum: NGVD29 NAVD88
Meas. Units: Metric Imperial

Corner - Left as found Found and tagged Established Reestablished Rebuilt

Identification and type of corner found: Evidence used to identify or procedure used to establish or reestablish the corner:

SEE SKETCH ON BACKSIDE

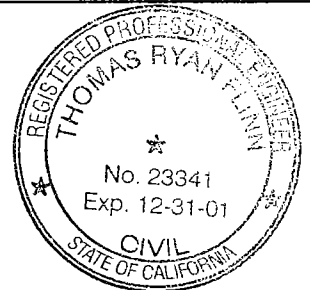
A description of the physical condition of the monument as found and as set or reset:

FOUND MONUMENT IN GOOD CONDITION
SEE SKETCH ON BACKSIDE

SURVEYOR'S STATEMENT

This Corner Record was prepared by me or under my direction in conformance with the Land Surveyors' Act on July 6, 2000.

Signed [Signature] L.S. or R.C.E. Number 23341



COUNTY SURVEYOR'S STATEMENT

This Corner Record was received JULY 6, 2000 and examined and filed JULY 10, 2000.

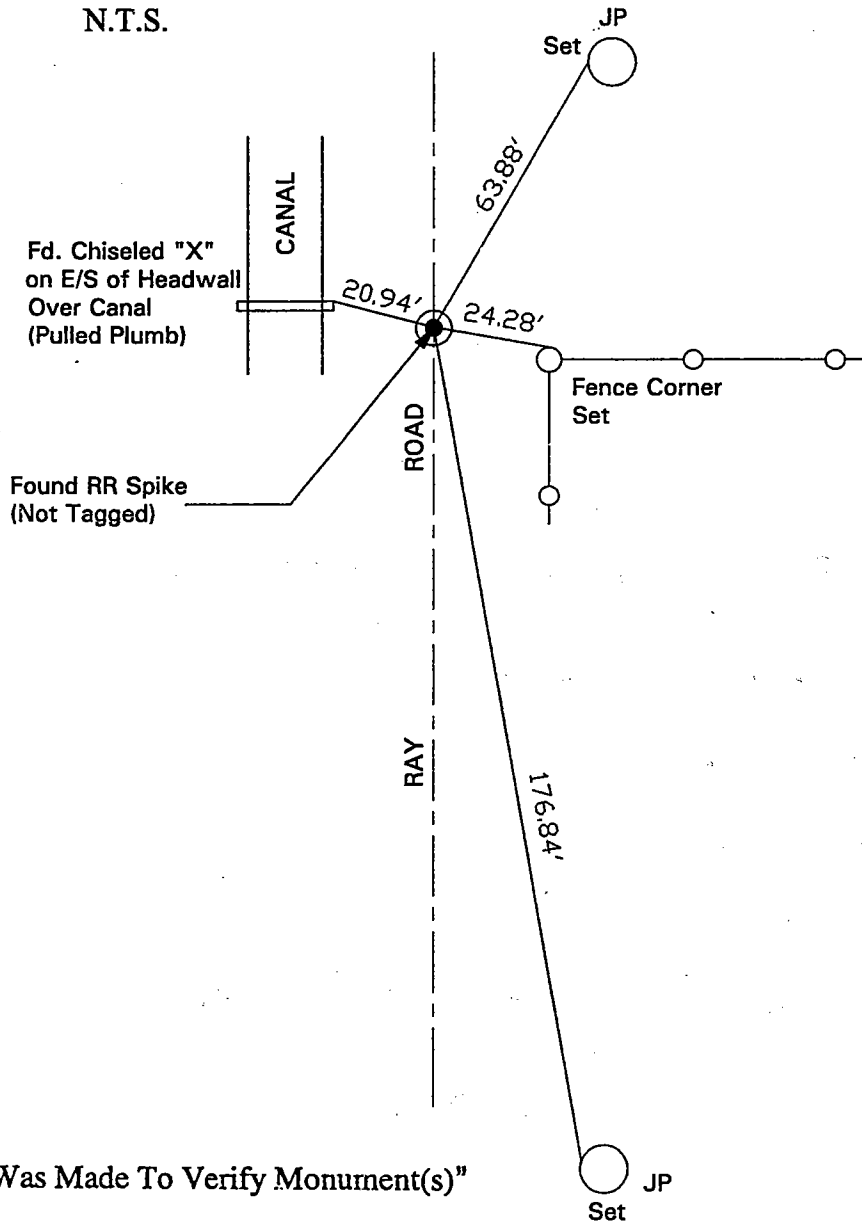
Signed [Signature] R.C.E. No. 28054
Title County Surveyor



County Surveyors Comment _____



N.T.S.



"No Attempt Was Made To Verify Monument(s)"

FP = Fence Post

GP = Guy Post

JP = Joint Pole

PP = Power Pole

SP = Service Pole

TP = Telephone Pole

N.T.S. = Not To Scale

Set = Conc. Nails with Brass Washers Stamped "S.J. Co.", unless otherwise noted