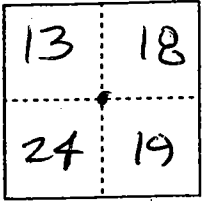


CORNER RECORD

Document Number 00-215
 City of _____ County of San Joaquin, California

Brief Legal Description NE. CORNER OF SECTION 24, T.4N, R.7E.

T
4
N
R
7
E



T
4
N
R
8
E

CORNER TYPE

Government Corner Control
 Meander Property
 Rancho Other
 Date of Survey 6-12-00

COORDINATES (Optional)

N. _____
 E. _____
 Zone _____ NAD27 NAD83
 NAD83 Epoch _____
 Elev. _____
 Vert. Datum: NGVD29 NAVD88
 Meas. Units: Metric Imperial

Corner - Left as found Found and tagged Established Reestablished Rebuilt

Identification and type of corner found: Evidence used to identify or procedure used to establish or reestablish the corner:
FOUND PIN & WASHER STAMPED "S) CO SURVEYOR - LS 2239"
CONFIRMED LOCATION PER SWINGS ON CR 00-163
SEE SKETCH ON BACKSIDE

A description of the physical condition of the monument as found and as set or reset:
FOUND MONUMENT IN GOOD CONDITION
SEE SKETCH ON BACKSIDE

SURVEYOR'S STATEMENT

This Corner Record was prepared by me or under my direction in conformance with the Land Surveyors' Act on June 23, 2000.

Signed _____ L.S. or R.C.E. Number 23341

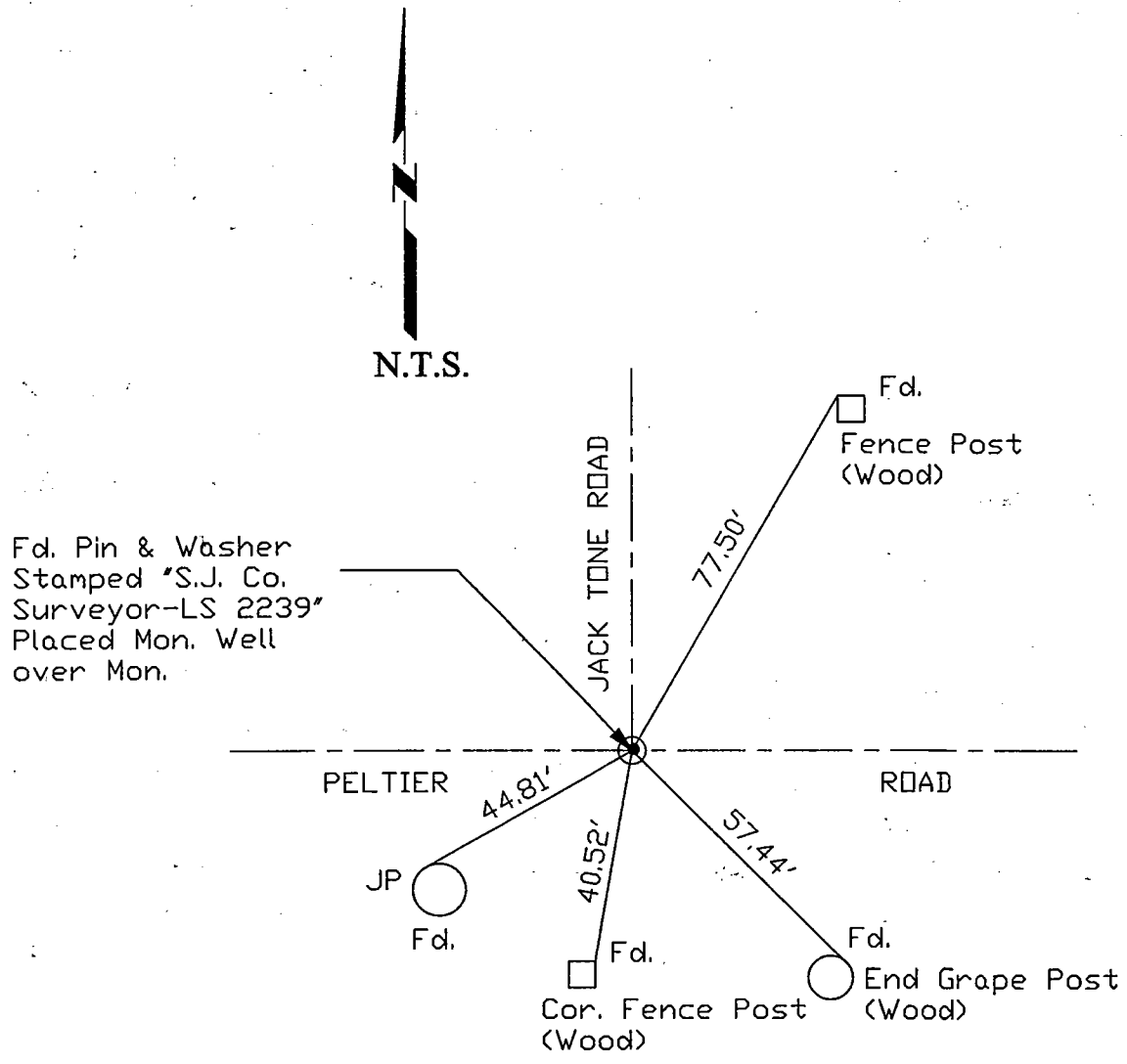
COUNTY SURVEYOR'S STATEMENT

This Corner Record was received JUNE 26, 2000 and examined and filed JUNE 28, 2000.

Signed Manuel Lopez R.C.E. No. 28054
 Title _____ County Surveyor



County Surveyors Comment _____



"No Attempt Was Made To Verify Monument(s)"

- FP = Fence Post
- GP = Guy Post
- JP = Joint Pole
- PP = Power Pole
- SP = Service Pole
- TP = Telephone Pole
- N.T.S. = Not To Scale

Fd = Conc. Nails with Brass Washers Stamped "S.J. Co.", unless otherwise noted