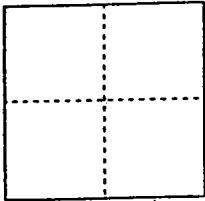


CORNER RECORD

Document Number 00-213
County of San Joaquin, California

City of _____

Brief Legal Description DN PELTIER ROAD 4040^{1±} E/O JACK TONE ROAD



CORNER TYPE

Government Corner Control
Meander Property
Rancho Other
Date of Survey 6-12-00

COORDINATES (Optional)

N. _____
E. _____
Zone _____ NAD27 NAD83
NAD83 Epoch _____
Elev. _____
Vert. Datum: NGVD29 NAVD88
Meas. Units: Metric Imperial

Corner - Left as found Found and tagged Established Reestablished Rebuilt

Identification and type of corner found: Evidence used to identify or procedure used to establish or reestablish the corner:
FOUND PIN & WASHER. CONFIRMED LOCATION PER SWINGS
ON CR-00-161 SEE SKETCH ON BACKSIDE

A description of the physical condition of the monument as found and as set or reset:
FOUND MONUMENT IN GOOD CONDITION
SEE SKETCH ON BACKSIDE

SURVEYOR'S STATEMENT

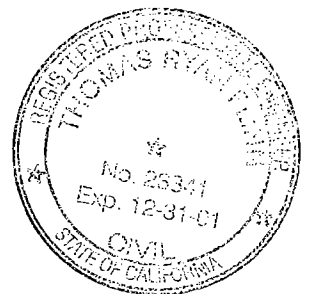
This Corner Record was prepared by me or under my direction in conformance with the Land Surveyors' Act on June 23, 2000.

Signed _____ L.S. or R.C.E. Number 23341

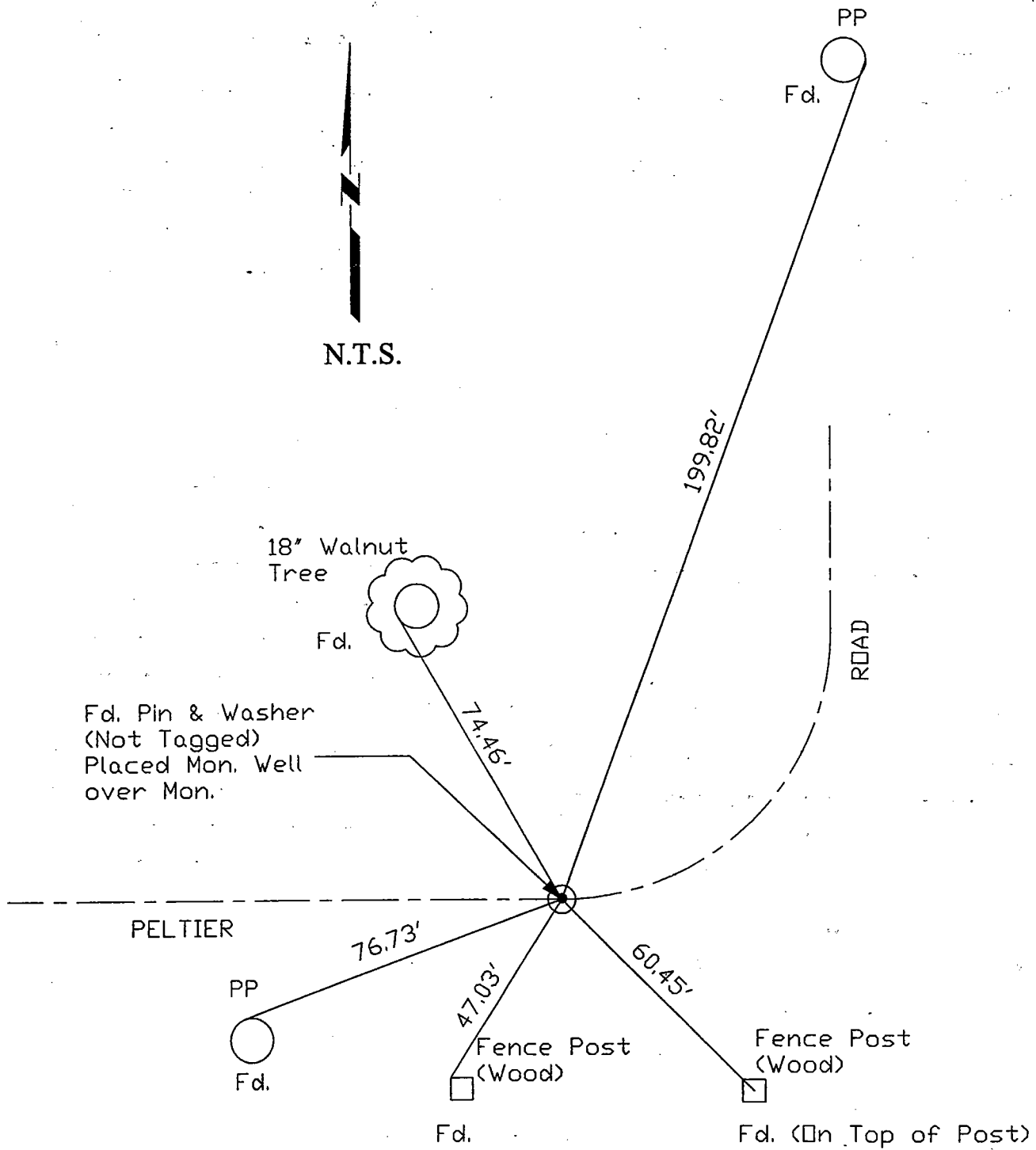
COUNTY SURVEYOR'S STATEMENT

This Corner Record was received JUNE 26, 2000 and examined and filed JUNE 28, 2000.

Signed Manuel Lopez R.C.E. No. 28054
Title County Surveyor



County Surveyors Comment _____



"No Attempt Was Made To Verify Monument(s)"

FP = Fence Post

GP = Guy Post

JP = Joint Pole

PP = Power Pole

SP = Service Pole

TP = Telephone Pole

N.T.S. = Not To Scale

Fd = Conc. Nails with Brass Washers Stamped "S.J. Co.", unless otherwise noted