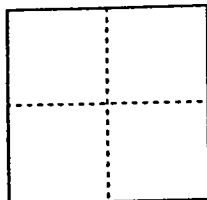


# CORNER RECORD

Document Number 00-208  
County of San Joaquin, California

City of \_\_\_\_\_

Brief Legal Description Intersection of Eight Mile Road and Mike Grove Road



### CORNER TYPE

- Government Corner  Control
- Meander  Property
- Rancho  Other

Date of Survey 6-2-00

### COORDINATES (Optional)

N. \_\_\_\_\_  
 E. \_\_\_\_\_  
 Zone \_\_\_\_\_ NAD27  NAD83   
 NAD83 Epoch \_\_\_\_\_  
 Elev. \_\_\_\_\_  
 Vert. Datum: NGVD29  NAVD88   
 Meas. Units: Metric  Imperial

Corner - Left as found  Found and tagged  Established  Reestablished  Rebuilt

Identification and type of corner found: Evidence used to identify or procedure used to establish or reestablish the corner:

Fd Brass capped Rod Stamped "LS 2239" Confirmed location per swings on C.R. -00-195. See Sketch on Backside

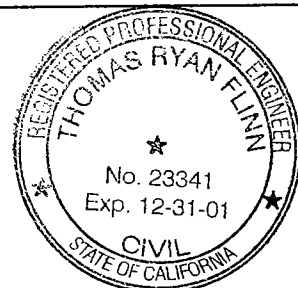
A description of the physical condition of the monument as found and as set or reset:

Fd Monument in Good Condition. See Sketch on Backside

### SURVEYOR'S STATEMENT

This Corner Record was prepared by me or under my direction in conformance with the Land Surveyors' Act on June 14, 2000.

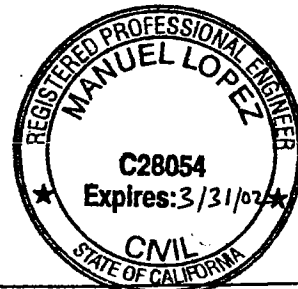
Signed [Signature] L.S. or R.C.E. Number 23341



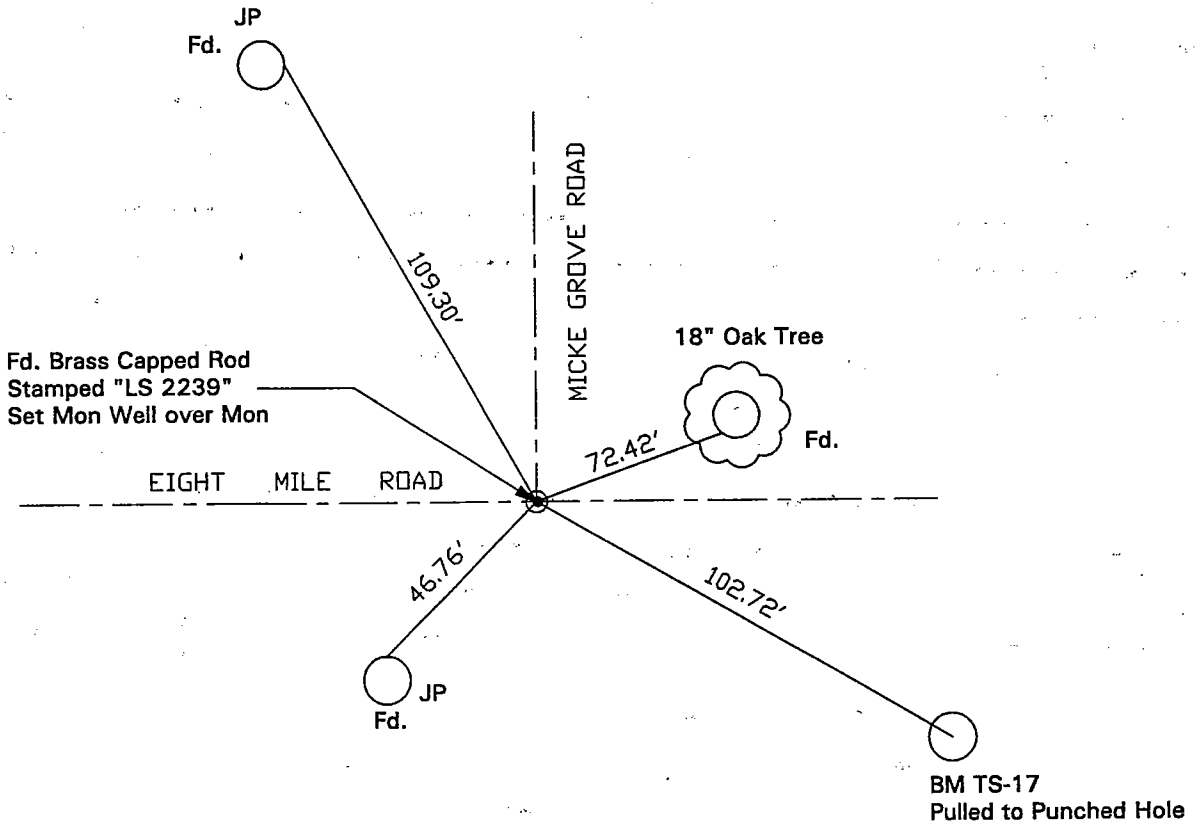
### COUNTY SURVEYOR'S STATEMENT

This Corner Record was received JUNE 15, 2000 and examined and filed \_\_\_\_\_, 2000.

Signed [Signature] R.C.E. No. 28054  
Title County Surveyor



County Surveyors Comment \_\_\_\_\_



"No Attempt Was Made To Verify Monument(s)"

FP = Fence Post

GP = Guy Post

JP = Joint Pole

PP = Power Pole

SP = Service Pole

TP = Telephone Pole

N.T.S. = Not To Scale

Fd = Conc. Nails with Brass Washers Stamped "S.J. Co.", unless otherwise noted