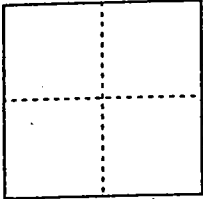


CORNER RECORD

Document Number 00-206
County of San Joaquin, California

City of _____

Brief Legal Description Intersection of Jack Tone Road and Graves Road



CORNER TYPE

- Government Corner Control
- Meander Property
- Rancho Other

Date of Survey 6-2-00

COORDINATES (Optional)

N. _____
 E. _____
 Zone _____ NAD27 NAD83
 NAD83 Epoch _____
 Elev. _____
 Vert. Datum: NGVD29 NAVD88
 Meas. Units: Metric Imperial

Corner - Left as found Found and tagged Established Reestablished Rebuilt

Identification and type of corner found: Evidence used to identify or procedure used to establish or reestablish the corner:

Reestablished location of Fd PK Nail per swings on CP-00-63. See sketch on backside

A description of the physical condition of the monument as found and as set or reset: Set PK Nail on surface See sketch on Backside

SURVEYOR'S STATEMENT

This Corner Record was prepared by me or under my direction in conformance with the Land Surveyors' Act on June 13, 2000.

Signed [Signature] L.S. or R.C.E. Number 23341

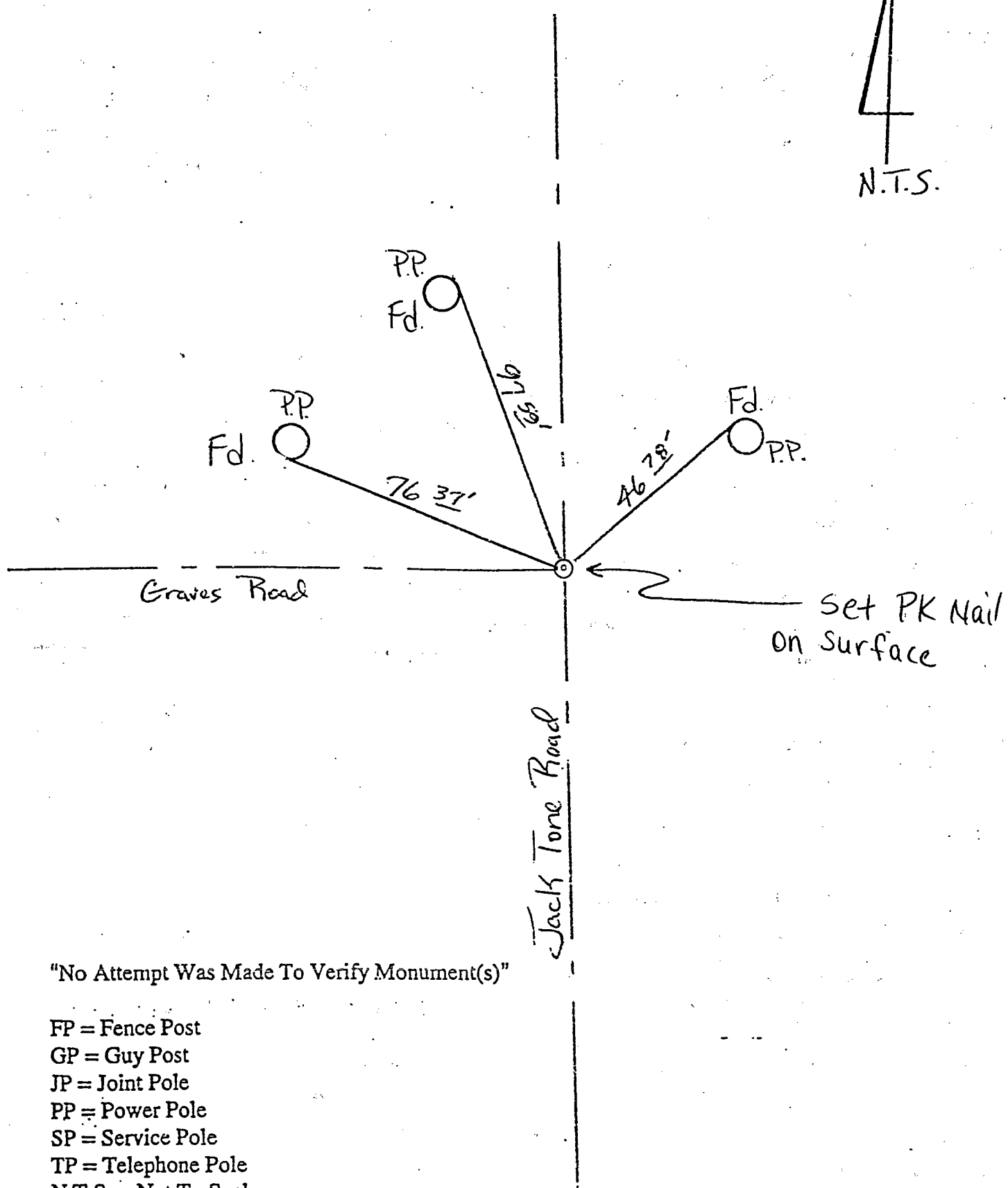
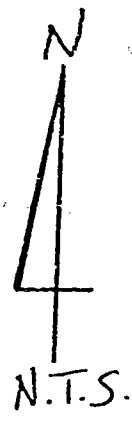
COUNTY SURVEYOR'S STATEMENT

This Corner Record was received JUNE 14, 2000 and examined and filed JUNE 15, 2000.

Signed [Signature] R.C.E. No. 28054
Title County Surveyor

County Surveyors Comment _____





"No Attempt Was Made To Verify Monument(s)"

- FP = Fence Post
- GP = Guy Post
- JP = Joint Pole
- PP = Power Pole
- SP = Service Pole
- TP = Telephone Pole
- N.T.S. = Not To Scale

Fd = Conc. Nails with Brass Washers Stamped "S.J. Co.", unless otherwise noted