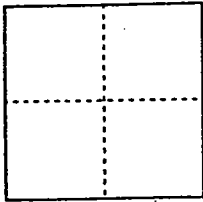


CORNER RECORD

Document Number 00-195
County of San Joaquin, California

City of _____

Brief Legal Description Intersection of Eight Mile Road and Mike Grove Road



CORNER TYPE

Government Corner Control
Meander Property
Rancho Other
Date of Survey 4-12-00

COORDINATES (Optional)

N. _____
E. _____
Zone _____ NAD27 NAD83
NAD83 Epoch _____
Elev. _____
Vert. Datum: NGVD29 NAVD88
Meas. Units: Metric Imperial

Corner - Left as found Found and tagged Established Reestablished Rebuilt

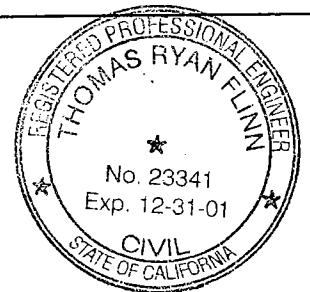
Identification and type of corner found: Evidence used to identify or procedure used to establish or reestablish the corner:
See Sketch on Backside

A description of the physical condition of the monument as found and as set or reset:
Found Monument in Good Condition
See Sketch on Backside

SURVEYOR'S STATEMENT

This Corner Record was prepared by me or under my direction in conformance with the Land Surveyors' Act on June 14, 2000.

Signed [Signature] R.C.E. Number 23341



COUNTY SURVEYOR'S STATEMENT

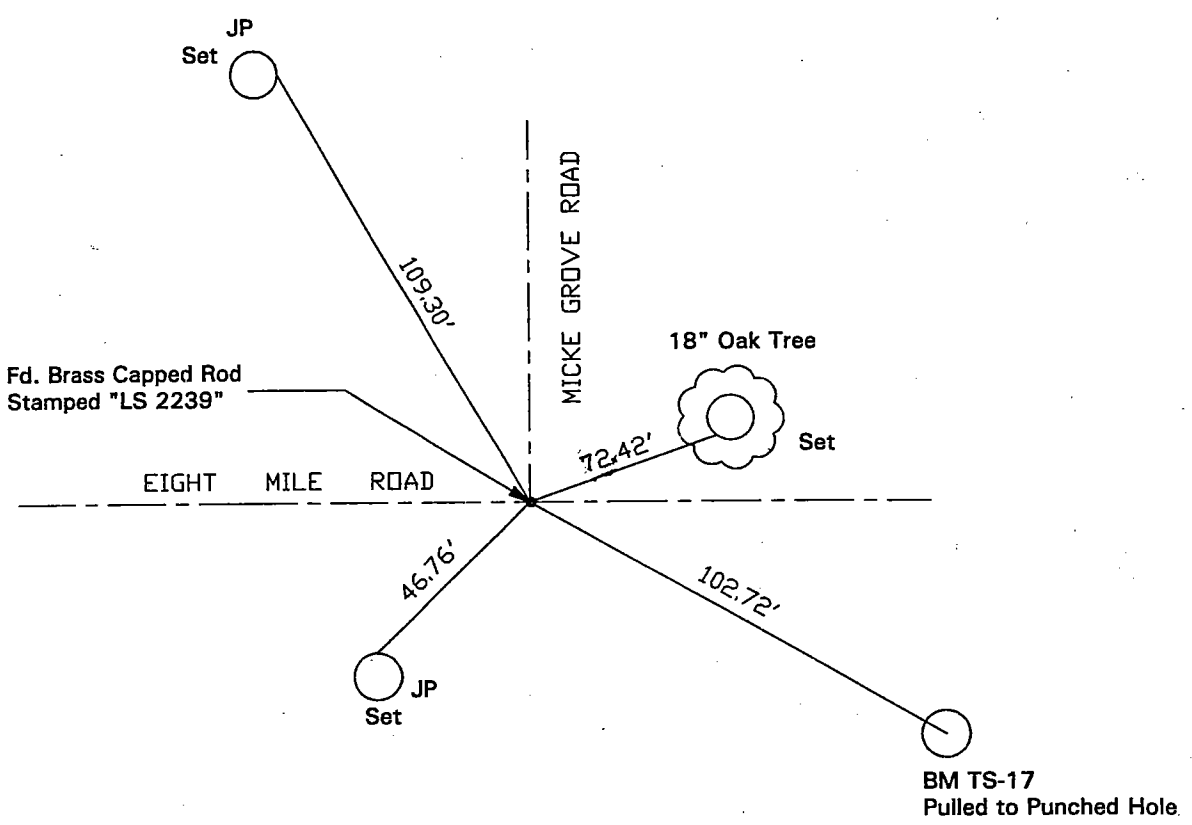
This Corner Record was received JUNE 15, 2000 and examined and filed _____, 2000.

Signed [Signature] R.C.E. No. 28054
Title County Surveyor



County Surveyors Comment _____

N.T.S.



"No Attempt Was Made To Verify Monument(s)"

- FP = Fence Post
- GP = Guy Post
- JP = Joint Pole
- PP = Power Pole
- SP = Service Pole
- TP = Telephone Pole
- N.T.S. = Not To Scale
- Set = Conc. Nails with Brass Washers Stamped "S.J. Co.", unless otherwise noted