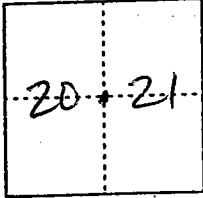


CORNER RECORD

Document Number CL-00-189
County of San Joaquin, California

City of _____

Brief Legal Description SE corner of NE quarter of Section 20
TINR9E



TINR9E

CORNER TYPE

Government Corner Control
Meander Property
Rancho Other
Date of Survey 3-13-00

COORDINATES (Optional)

N. _____
E. _____
Zone _____ NAD27 NAD83
NAD83 Epoch _____
Elev. _____
Vert. Datum: NGVD29 NAVD88
Meas. Units: Metric Imperial

Corner - Left as found Found and tagged Established Reestablished Rebuilt

Identification and type of corner found: Evidence used to identify or procedure used to establish or reestablish the corner:
See Sketch on Backside

A description of the physical condition of the monument as found and as set or reset:
Found Monument in Good Condition
See Sketch on Backside

SURVEYOR'S STATEMENT

This Corner Record was prepared by me or under my direction in conformance with the Land Surveyors' Act on May 24, 2000.

Signed _____ LS. or R.C.E. Number 23341



COUNTY SURVEYOR'S STATEMENT

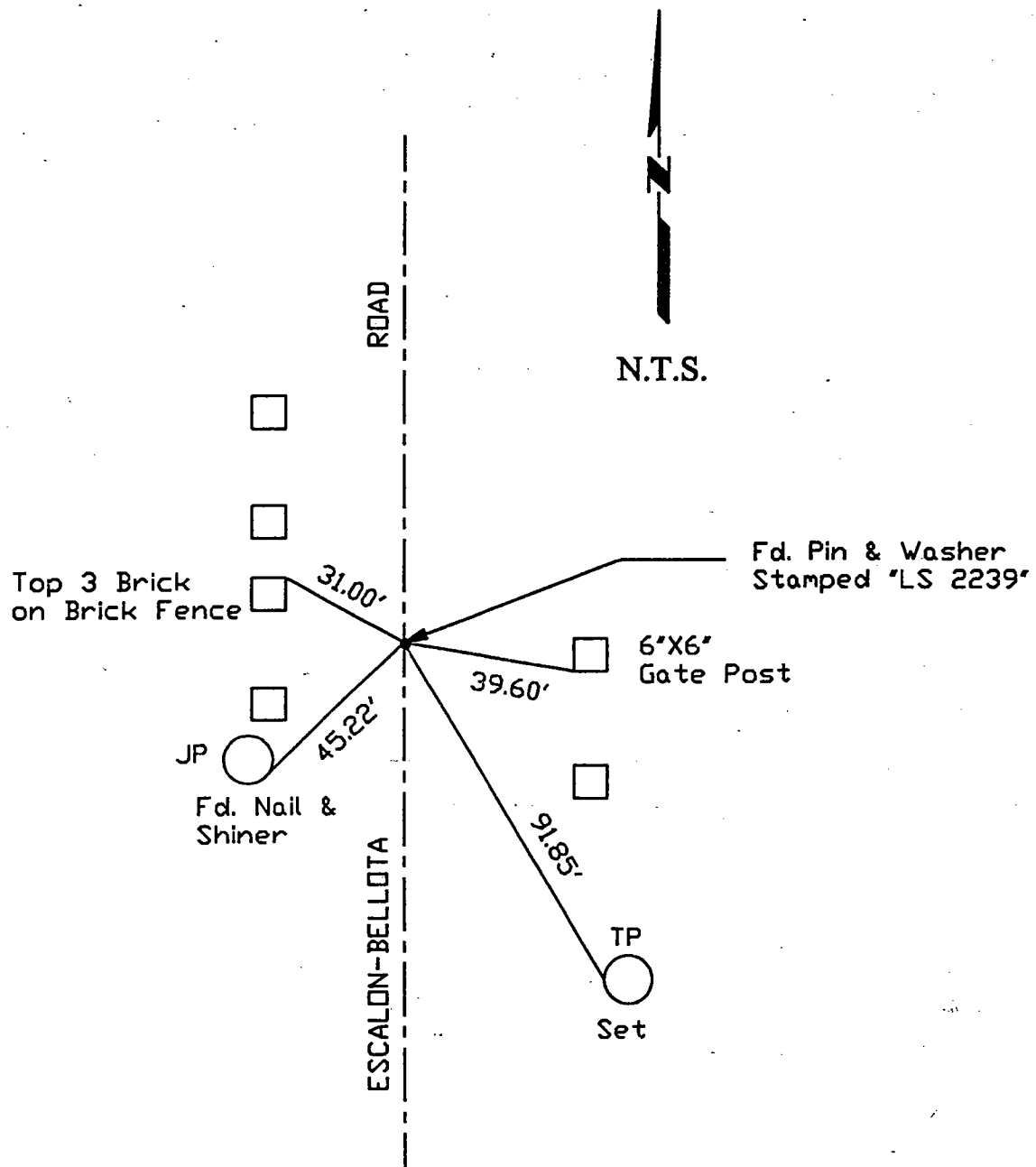
This Corner Record was received MAY 25, 2000 and examined and filed MAY 29, 2000.

Signed _____ R.C.E. No. 28054

Title _____ County Surveyor



County Surveyors Comment _____



"No Attempt Was Made To Verify Monument(s)"

FP = Fence Post

GP = Guy Post

JP = Joint Pole

PP = Power Pole

SP = Service Pole

TP = Telephone Pole

N.T.S. = Not To Scale

Set = Conc. Nails with Brass Washers Stamped "S.J. Co.", unless otherwise noted