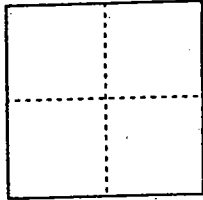


CORNER RECORD

Document Number CR-00-173  
County of San Joaquin, California

City of \_\_\_\_\_

Brief Legal Description On Escalon-Bellota Road 6622'± north of  
Gawne Road



CORNER TYPE

Government Corner  Control   
Meander  Property   
Rancho  Other   
Date of Survey 3-13-00

COORDINATES (Optional)

N. \_\_\_\_\_  
E. \_\_\_\_\_  
Zone \_\_\_\_\_ NAD27  NAD83   
NAD83 Epoch \_\_\_\_\_  
Elev. \_\_\_\_\_  
Vert. Datum: NGVD29  NAVD88   
Meas. Units: Metric  Imperial

Corner - Left as found  Found and tagged  Established  Reestablished  Rebuilt

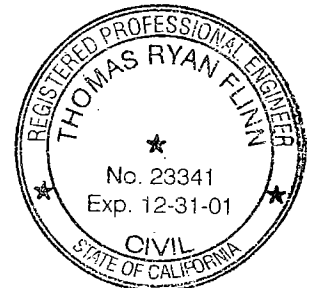
Identification and type of corner found: Evidence used to identify or procedure used to establish or reestablish the corner:  
See Sketch on Backside

A description of the physical condition of the monument as found and as set or reset:  
Found Monument in Good Condition  
See Sketch on Backside

SURVEYOR'S STATEMENT

This Corner Record was prepared by me or under my direction in conformance with the Land Surveyors' Act on May 24, 2000.

Signed \_\_\_\_\_ L.S. or R.C.E. Number 23341



COUNTY SURVEYOR'S STATEMENT

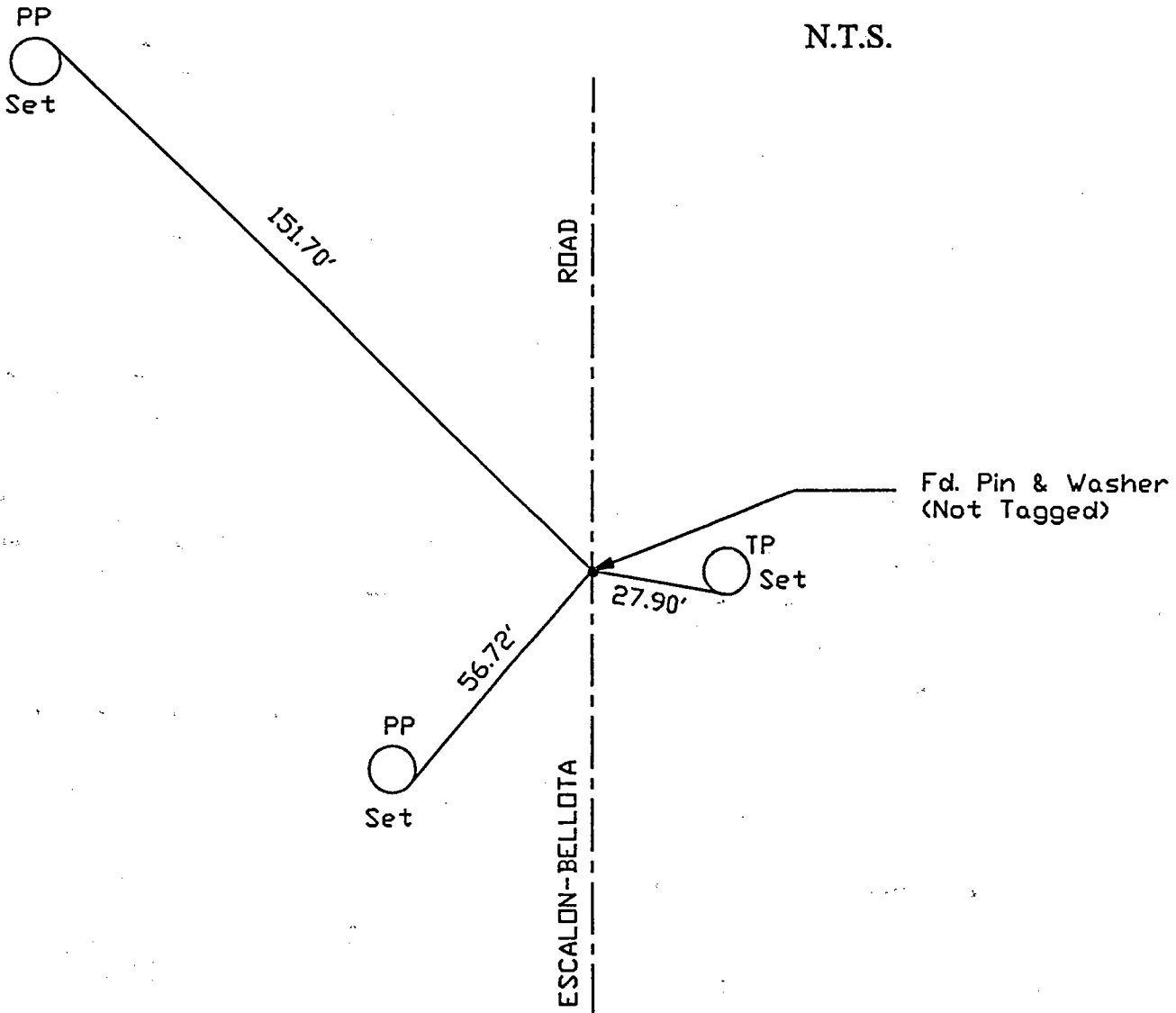
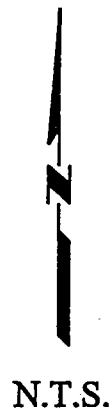
This Corner Record was received MAY 25, 2000 and examined and filed MAY 29, 2000.

Signed Manuel Lopez R.C.E. No. 28054

Title County Surveyor



County Surveyors Comment \_\_\_\_\_



"No Attempt Was Made To Verify Monument(s)"

FP = Fence Post

GP = Guy Post

JP = Joint Pole

PP = Power Pole

SP = Service Pole

TP = Telephone Pole

N.T.S. = Not To Scale

Set = Conc. Nails with Brass Washers Stamped "S.J. Co.", unless otherwise noted