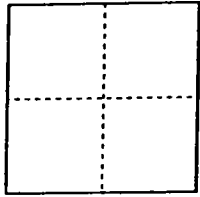


CORNER RECORD

Document Number CR-00-170
County of San Joaquin, California

City of RIPON

Brief Legal Description LOT 17 OF "VAN VELDUZEN TRACT", M.&P. 11-91,
SAN JOAQUIN COUNTY RECORDS



CORNER TYPE

- Government Corner Control
- Meander Property
- Rancho Other

Date of Survey MARCH 24, 2000

COORDINATES (Optional)

N. _____
 E. _____
 Zone _____ NAD27 NAD83
 NAD83 Epoch _____
 Elev. _____
 Vert. Datum: NGVD29 NAVD88
 Meas. Units: Metric Imperial

Corner - Left as found Found and tagged Established Reestablished Rebuilt

Identification and type of corner found: Evidence used to identify or procedure used to establish or reestablish the corner:
FOUND SUFFICIENT RECORD CORNERS SHOWN ON VOL. 11 OF MAPS AND PLATS,
PAGE 91, AND BOOK 33 OF SURVEYS, PAGE 72 TO REESTABLISH THE MISSING
CORNER.

A description of the physical condition of the monument as found and as set or reset:
SET 3/4" DIAMETER X 30" LONG IRON PIN TAGGED R.C.E. 14269
AT THE LOCATION NOTED ON THE CORNER RECORD.

SURVEYOR'S STATEMENT

This Corner Record was prepared by me or under my direction in conformance with
the Land Surveyors' Act on MAY 4, 2000.

Signed G. Chance Wong L.S. or R.C.E. Number 14269

COUNTY SURVEYOR'S STATEMENT

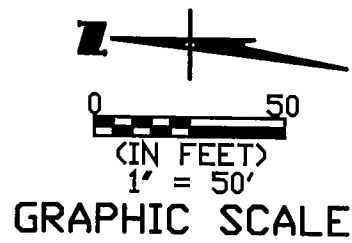
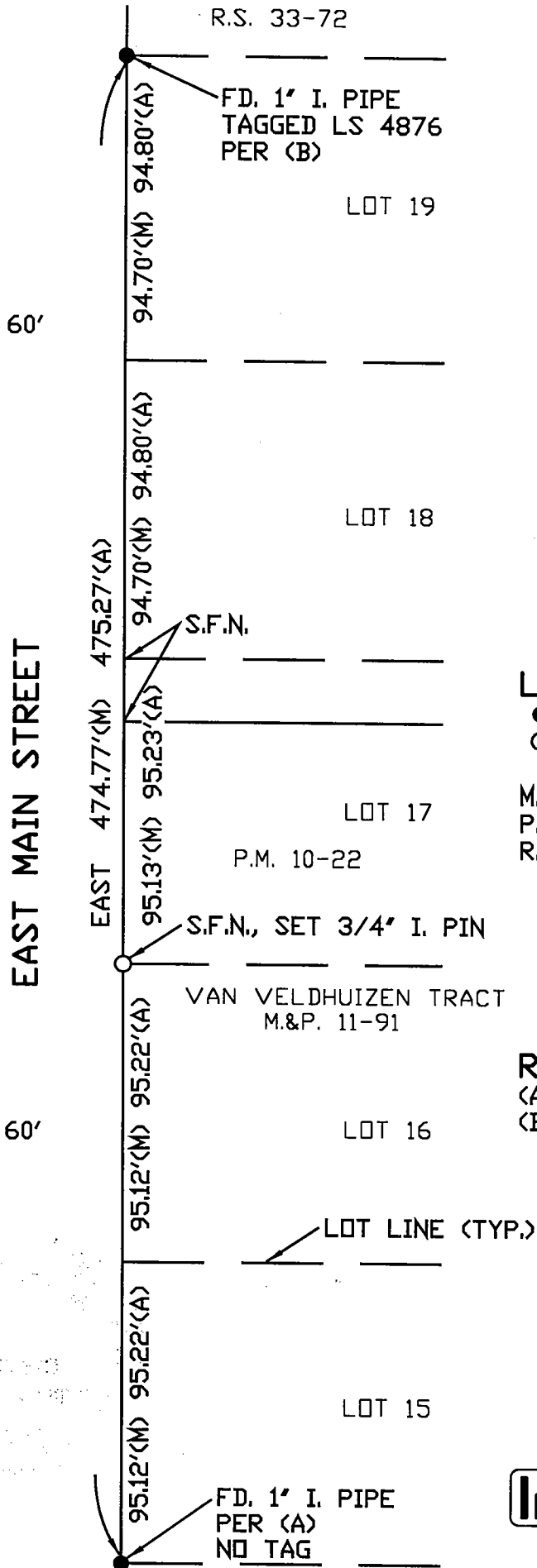
This Corner Record was received MAY 5, 2000 and examined
and filed MAY 15, 2000

Signed Manuel Lopez R.C.E. No. 28054
Title County Surveyor

County Surveyor's Comment _____



EAST MAIN STREET



- LEGEND:**
- FOUND AS NOTED
 - SET 3/4" I. PIN TAGGED
R.C.E. 14269
 - M.&P. DENOTES MAP & PLAT
 - P.M. DENOTES PARCEL MAP
 - R.S. DENOTES RECORD OF SURVEY

- REFERENCES:**
- (A) M.&P. 11-91, S.J. CO. RECORDS
 - (B) R.S. 33-72, S.J. CO. RECORDS

CORNER RECORD
WONG ENGINEERS, INC.
 PLANNING ENGINEERING SURVEYING
 STOCKTON, CALIFORNIA
 MAY 2000