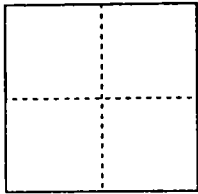


CORNER RECORD

City of STOCKTON

Document Number CR-00-169  
County of San Joaquin, California

Brief Legal Description ESTABLISHED MISSING CORNER OF THE 28.826 ACRE PARCEL  
SHOWN ON BOOK 34 OF SURVEYS, PAGE 22, SAN JOAQUIN COUNTY RECORDS



CORNER TYPE

Government Corner  Control   
Meander  Property   
Rancho  Other   
Date of Survey FEBRUARY 12, 2000

COORDINATES (Optional)

N. \_\_\_\_\_  
E. \_\_\_\_\_  
Zone \_\_\_\_\_ NAD27  NAD83   
NAD83 Epoch \_\_\_\_\_  
Elev. \_\_\_\_\_  
Vert. Datum: NGVD29  NAVD88   
Meas. Units: Metric  Imperial

Corner - Left as found  Found and tagged  Established  Reestablished  Rebuilt

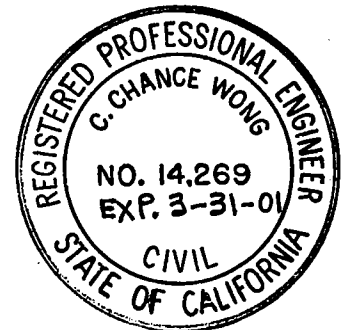
Identification and type of corner found: Evidence used to identify or procedure used to establish or reestablish the corner:  
FOUND SUFFICIENT RECORD CORNERS SHOWN ON BOOK 33 OF SURVEYS,  
PAGE 190 AND BOOK 34 OF SURVEYS, PAGE 22 TO REESTABLISH THE  
MISSING CORNER.

A description of the physical condition of the monument as found and as set or reset:  
SET 3/4" DIAMETER X 30" LONG IRON PIN TAGGED R.C.E. 14269  
AT THE LOCATION NOTED ON THE CORNER RECORD.

SURVEYOR'S STATEMENT

This Corner Record was prepared by me or under my direction in conformance with  
the Land Surveyors' Act on MARCH 3, 2000.

Signed C. Chance Wong R.C.E. Number 14269



COUNTY SURVEYOR'S STATEMENT

This Corner Record was received APRIL 26, 2000 and examined  
and filed MAY 9, 2000

Signed Manuel Lopez R.C.E. No. 28054  
Title County Surveyor



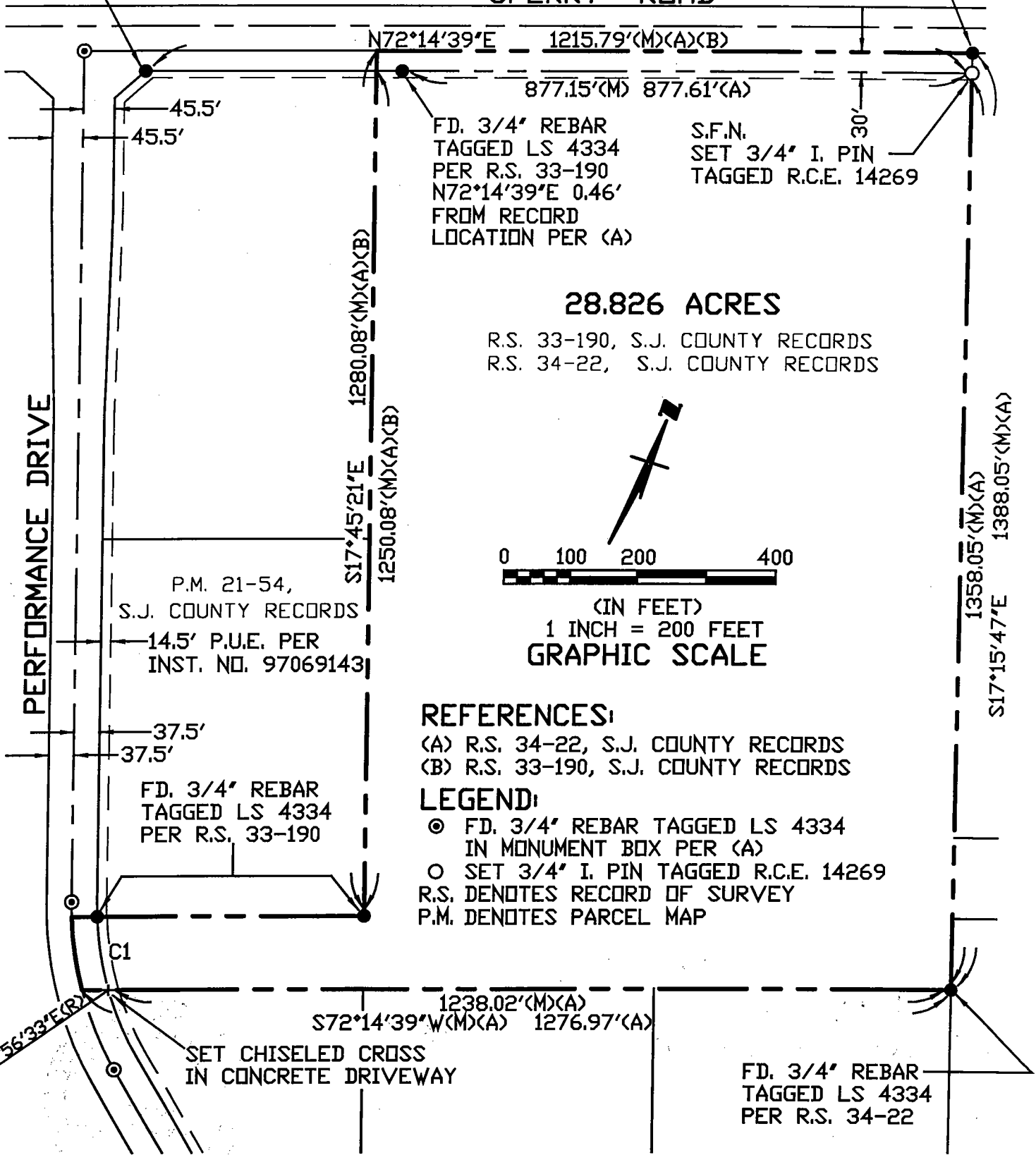
County Surveyor's Comment \_\_\_\_\_

(D.D. Sheet No. 35 )

FD. 3/4" REBAR  
TAGGED LS 4334  
PER P.M. 21-54

FD. 3/4" REBAR  
TAGGED LS 4334  
PER R.S. 33-190

**SPERRY ROAD**

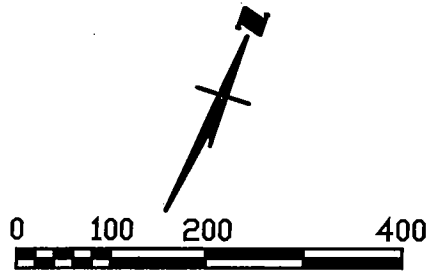


FD. 3/4" REBAR  
TAGGED LS 4334  
PER R.S. 33-190  
 $N72^{\circ}14'39''E$  0.46'  
FROM RECORD  
LOCATION PER (A)

S.F.N.  
SET 3/4" I. PIN  
TAGGED R.C.E. 14269

**28.826 ACRES**

R.S. 33-190, S.J. COUNTY RECORDS  
R.S. 34-22, S.J. COUNTY RECORDS



(IN FEET)  
1 INCH = 200 FEET  
**GRAPHIC SCALE**

**REFERENCES:**

- (A) R.S. 34-22, S.J. COUNTY RECORDS
- (B) R.S. 33-190, S.J. COUNTY RECORDS

**LEGEND:**

- ⊙ FD. 3/4" REBAR TAGGED LS 4334  
IN MONUMENT BOX PER (A)
- SET 3/4" I. PIN TAGGED R.C.E. 14269
- R.S. DENOTES RECORD OF SURVEY
- P.M. DENOTES PARCEL MAP

**CURVE TABLE (M) (REF. A)**

NO.	RADIUS	LENGTH	CHORD	CH. BEARING	DELTA
C1	462.50'	109.68'	109.42'	$N27^{\circ}15'50''W$	$13^{\circ}35'15''$

**CORNER RECORD**

**WONG ENGINEERS, INC.**  
PLANNING ENGINEERING SURVEYING  
STOCKTON, CALIFORNIA  
MARCH 2000