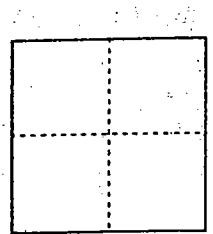


CORNER RECORD

Document Number 00-160
County of San Joaquin, California

City of _____

Brief Legal Description On Comstock Road 5255'± east of Wall Road



CORNER TYPE

Government Corner Control
Meander Property
Rancho Other

Date of Survey 1-31-00

COORDINATES (Optional)

N. _____
E. _____
Zone _____ NAD27 NAD83
NAD83 Epoch _____
Elev. _____
Vert. Datum: NGVD29 NAVD88
Meas. Units: Metric Imperial

Corner - Left as found Found and tagged Established Reestablished Rebuilt

Identification and type of corner found: Evidence used to identify or procedure used to establish or reestablish the corner:

See Sketch on Backside

A description of the physical condition of the monument as found and as set or reset:

Found Monument in Good Condition
See Sketch on Backside

SURVEYOR'S STATEMENT

This Corner Record was prepared by me or under my direction in conformance with the Land Surveyors Act on 2-29, 2000.

Signed [Signature] L.S. or R.C.E. Number 23341

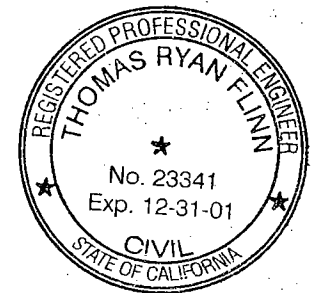
COUNTY SURVEYOR'S STATEMENT

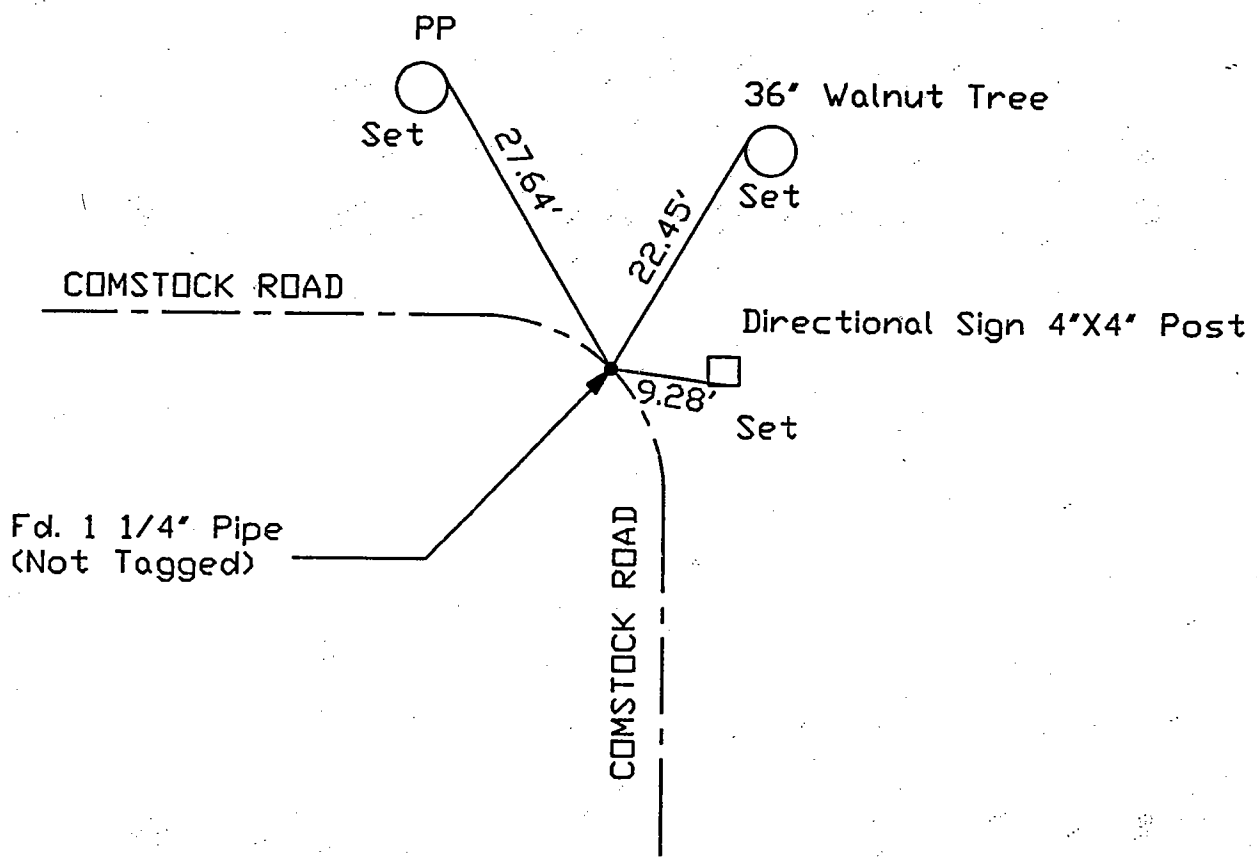
This Corner Record was received Feb. 29, 2000 and examined and filed March 6, 2000.

Signed Henry M. Murata R.C.E. No. 21258
Title County Surveyor

County Surveyors Comment _____

(D.D. Sheet No. 24)





"No Attempt Was Made To Verify Monument(s)"

- FP = Fence Post
- GP = Guy Post
- JP = Joint Pole
- PP = Power Pole
- SP = Service Pole
- TP = Telephone Pole
- N.T.S. = Not To Scale
- Set = Conc. Nails with Brass Washers Stamped "S.J. Co.", unless otherwise noted