

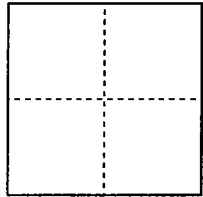
**CORNER RECORD**

Document Number 00-159  
County of San Joaquin, California

City of \_\_\_\_\_

Brief Legal Description City of Stockton Control Monument "6S-7" on east levee of the Stockton Diverting Canal, 10 feet +/- south of Union Pacific Railroad tracks per Record of Survey 29-34.

**CORNER TYPE**



Government Corner  Control   
Meander  Property   
Rancho  Other

Date of Survey February 8, 2000

**COORDINATES (Optional)**

N. 2,176,694.278 per R.S. 33-20  
E. 6,353,426.818 per R.S. 33-20  
Zone 3 NAD27  NAD83   
NAD83 Epoch (1991.35)  
Elev. \_\_\_\_\_  
Vert. Datum: NGVD29  NAVD88   
Meas. Units: Metric  Imperial

Corner - Left as found  Found and tagged  Established  Reestablished  Rebuilt

Identification and type of corner found: Evidence used to identify or procedure used to establish or reestablish the corner:  
City of Stockton Control Monument was destroyed during levee reconstruction. Reestablished per ties shown on Record of Survey 29-34.

A description of the physical condition of the monument as found and as set or reset: Found chiseled "L" on concrete railroad bridge-deck at NW and NE corners per Record of Survey 29-34. Set 2-1/2 inch diameter brass disk stamped "CITY OF STOCKTON SURVEY MONUMENT 6S-7 RESET 2/00 LS 7520", set in concrete on the east levee of the Stockton Diverting Canal, flush with existing ground.

**SURVEYOR'S STATEMENT**

This Corner Record was prepared by me or under my direction in conformance with the Land Surveyors' Act on February 8, 2000.

Signed David W. Lanphear L.S. Number 7520



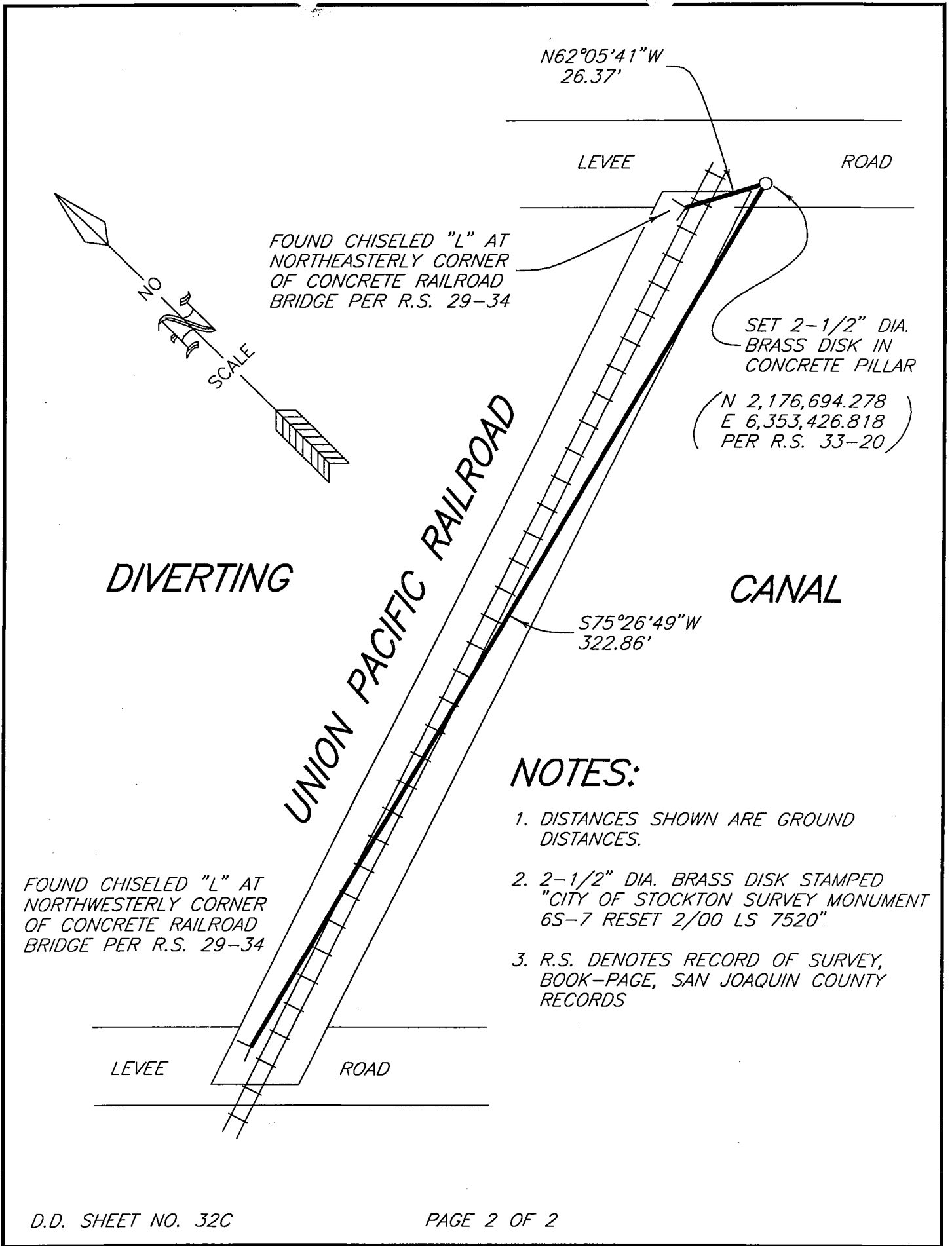
**COUNTY SURVEYOR'S STATEMENT**

This Corner Record was received February 28, 2000 and examined and filed March 6, 2000.

Signed Henry M. Therata R.C.E. No. 21258  
Title County Surveyor

County Surveyor's Comment \_\_\_\_\_

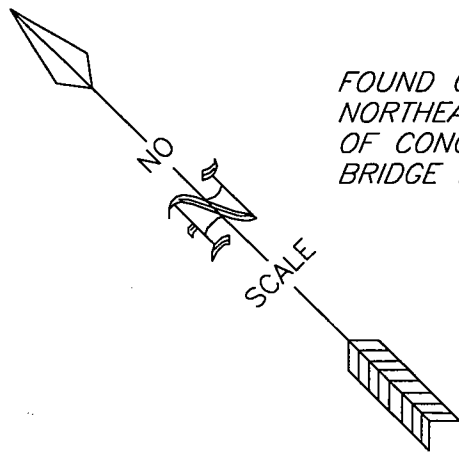
(D.D. Sheet No. 32C )



N62°05'41"W  
26.37'

LEVEE

ROAD



FOUND CHISELED "L" AT  
NORTHEASTERLY CORNER  
OF CONCRETE RAILROAD  
BRIDGE PER R.S. 29-34

SET 2-1/2" DIA.  
BRASS DISK IN  
CONCRETE PILLAR

( N 2,176,694.278  
E 6,353,426.818  
PER R.S. 33-20 )

DIVERTING

UNION PACIFIC RAILROAD

CANAL

S75°26'49"W  
322.86'

**NOTES:**

1. DISTANCES SHOWN ARE GROUND DISTANCES.
2. 2-1/2" DIA. BRASS DISK STAMPED "CITY OF STOCKTON SURVEY MONUMENT 6S-7 RESET 2/00 LS 7520"
3. R.S. DENOTES RECORD OF SURVEY, BOOK-PAGE, SAN JOAQUIN COUNTY RECORDS

FOUND CHISELED "L" AT  
NORTHWESTERLY CORNER  
OF CONCRETE RAILROAD  
BRIDGE PER R.S. 29-34

LEVEE

ROAD