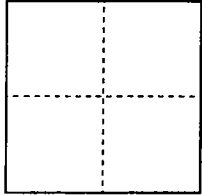


CORNER RECORD

City of Stockton

Document Number 00-157
County of San Joaquin, California

Brief Legal Description City of Stockton Control Monument "4N-11" on south levee of Bear Creek approximately 200' westerly of Lower Sacramento Road per Record of Survey 28-180.



CORNER TYPE

Government Corner Control
Meander Property
Rancho Other
Date of Survey February 8, 2000

COORDINATES (Optional)

N. 2,203,151.545 per R.S. 33-20
E. 6,324,725.887 per R.S. 33-20
Zone 3 NAD27 NAD83
NAD83 Epoch (1991.35)
Elev. _____
Vert. Datum: NGVD29 NAVD88
Meas. Units: Metric Imperial

Corner - Left as found Found and tagged Established Reestablished Rebuilt

Identification and type of corner found: Evidence used to identify or procedure used to establish or reestablish the corner:
City of Stockton Control Monument was destroyed during levee reconstruction. Reestablished per tie shown on Record of Survey 28-180.

A description of the physical condition of the monument as found and as set or reset: Found iron pin on 1/4 section line 60.00 feet southerly of the north 1/4 corner of Section 9, T.2 N., R.6 E., M.D.B. & M as shown on Maps & Plats 24-79 and Record of Survey 28-180. Set 2-1/2 inch diameter brass disk stamped "CITY OF STOCKTON SURVEY MONUMENT 4N-11 RESET 2/00 LS 7520", set in concrete on south levee of Bear Creek, flush with existing ground.

SURVEYOR'S STATEMENT

This Corner Record was prepared by me or under my direction in conformance with the Land Surveyors' Act on February 8, 2000.

Signed David W. Lanphear L.S. Number 7520



COUNTY SURVEYOR'S STATEMENT

This Corner Record was received February 28, 2000 and examined and filed March 6, 2000.

Signed Henry M. Merata R.C.E. No. 21258
Title County Surveyor

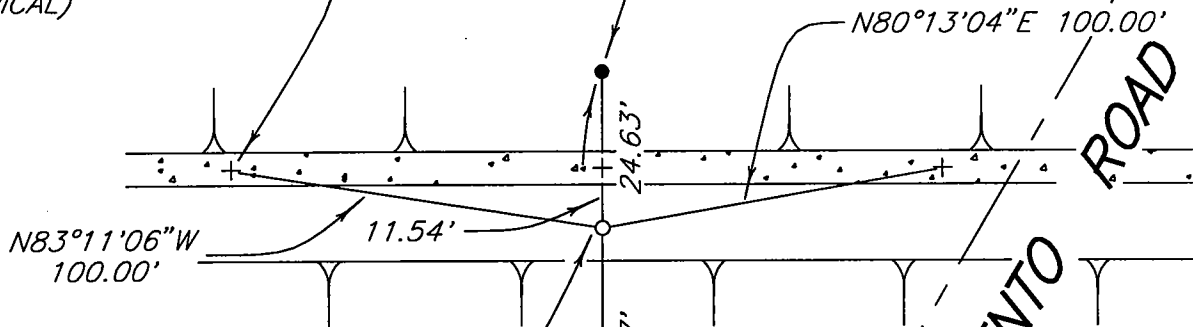
County Surveyor's Comment _____

(D.D. Sheet No. 29B)

BEAR CREEK

SET CHISELED "+" TOP
CONCRETE FLOODWALL
(TYPICAL)

FOUND 3/4" IRON PIN WITH PLASTIC
CAP STAMPED "R.C.E. 15831" AT 1/4
CORNER PER R.S. 34-88



SET 2-1/2" DIAMETER BRASS
DISK IN CONCRETE PILLAR

(N 2,203,151.545
E 6,324,725.887
PER R.S. 33-20)

FOUND 3/4 IRON PIN WITH
TAG STAMPED "R.C.E. 8189"
PER R.S. 28-180

1/4 SECTION LINE
500°03'56"E

LOWER SACRAMENTO ROAD

MORADA LANE

NOTES:

1. DISTANCES SHOWN ARE GROUND DISTANCES
2. 2-1/2" DIAMETER BRASS DISK STAMPED "CITY OF STOCKTON SURVEY MONUMENT 4N-11 RESET 2/00 LS 7520"
3. R.S. DENOTES RECORD OF SURVEY, BOOK-PAGE, SAN JOAQUIN COUNTY RECORDS



FOUND 3/4" IRON PIN, NO TAG
VISIBLE, IN MONUMENT WELL PER
R.S. 28-180