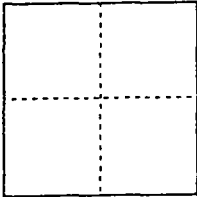


CORNER RECORD

Document Number 00-150
County of San Joaquin, California

City of _____

Brief Legal Description North half of Lot 19, Kennedy Tract, M.P. 10-58 S.J.C.R.,
being a portion of the NE 1/4 of Section 35, C.M. Weber Grant



CORNER TYPE

- Government Corner Control
- Meander Property
- Rancho Other

Date of Survey Dec 20, 1999

COORDINATES (Optional)

N. _____
 E. _____
 Zone _____ NAD27 NAD83
 NAD83 Epoch _____
 Elev. _____
 Vert. Datum: NGVD29 NAVD88
 Meas. Units: Metric Imperial

Corner - Left as found Found and tagged Established Reestablished Rebuilt

Identification and type of corner found: Evidence used to identify or procedure used to establish or reestablish the corner:

Found 1" Rebar tagged RCE 11591 per R.S. 12-134, S.J.C.R.

A description of the physical condition of the monument as found and as set or reset: I found a 1" Rebar tagged
RCE 11591 with the top half bent southeasterly and the bottom
half straight. I removed the 1" rebar and re-set a 3/4" x 30" IRON
PIPE tagged L.S. 4450 in its position but at a lower grade.

SURVEYOR'S STATEMENT

This Corner Record was prepared by me or under my direction in conformance with
the Land Surveyors' Act on Feb 16, 2000.

Signed Michael L. Quarteroni L.S. or ~~R.S.~~ Number 4450

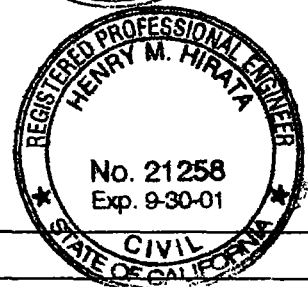


COUNTY SURVEYOR'S STATEMENT

This Corner Record was received Feb. 17, 2000 and examined
and filed February 23, 2000.

Signed Henry M. Hirata R.C.E. No. 21258

Title County Surveyor



County Surveyors Comment _____

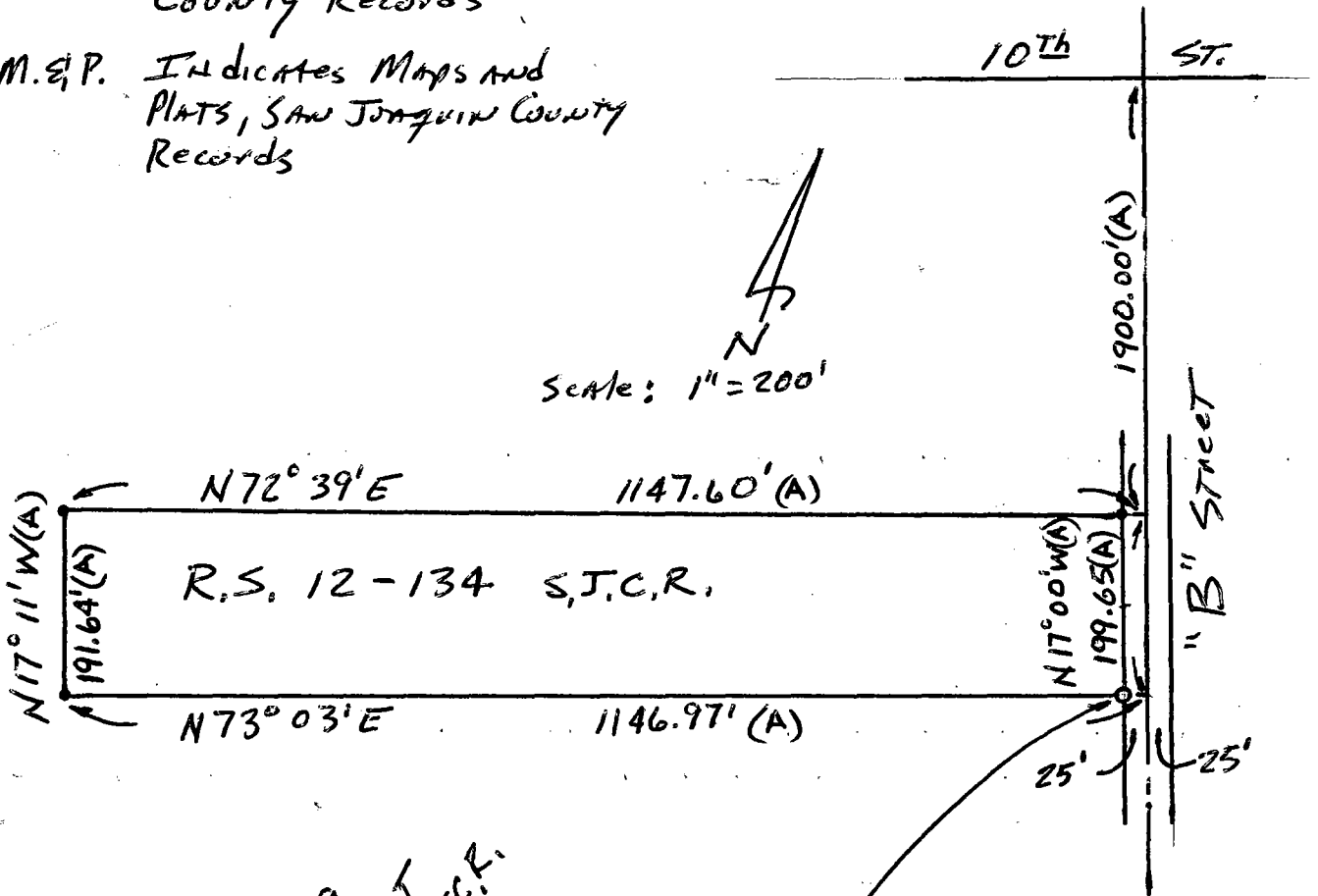
Reference

(A) Record of Survey, Book 12, page 134, SAN JOAQUIN County Records

Legend

R.S. INDICATES RECORD OF SURVEY, SAN JOAQUIN County Records

M.&P. INDICATES MAPS AND PLATS, SAN JOAQUIN County Records



R.S. 12-134 S.J.C.R.

LOT 19
KENNEDY TRACT
M.&P. 10-58 S.J.C.R.

Fd. 1" Rebar tagged RCE 11591 per (A) TOP half bent southerly and bottom half straight. I removed the 1" Rebar and reset a 3/4" Iron pipe tagged L.S. 4450 AT A lower grade.