

CORNER RECORD

Document Number 00-149
 County of San Joaquin, California

City of _____

Brief Legal Description Parcel "A" as shown on Parcel Map, Book 3, page 140
San Joaquin County Records



CORNER TYPE

Government Corner Control
 Meander Property
 Rancho Other
 Date of Survey Dec. 14, 1999

COORDINATES (Optional)

N. _____
 E. _____
 Zone _____ NAD27 NAD83
 NAD83 Epoch _____
 Elev. _____
 Vert. Datum: NGVD29 NAVD88
 Meas. Units: Metric Imperial

Corner - Left as found Found and tagged Established Reestablished Rebuilt

Identification and type of corner found: Evidence used to identify or procedure used to establish or reestablish the corner:

Found AS noted

A description of the physical condition of the monument as found and as set or reset: I found a 3/4" Iron pipe with the top half bent northerly and the bottom half straight. A wooden plug in the pipe was found, but no tag existed. I removed the pipe and re-set a 3/4" x 30" Iron pipe tagged L.S. 4450 in its position.

SURVEYOR'S STATEMENT

This Corner Record was prepared by me or under my direction in conformance with the Land Surveyors' Act on Feb 16, 2000.

Signed Michael L. Quarteroni L.S. or ~~R.E.~~ Number 4450

COUNTY SURVEYOR'S STATEMENT

This Corner Record was received Feb. 17, 2000 and examined and filed February 23, 2000.

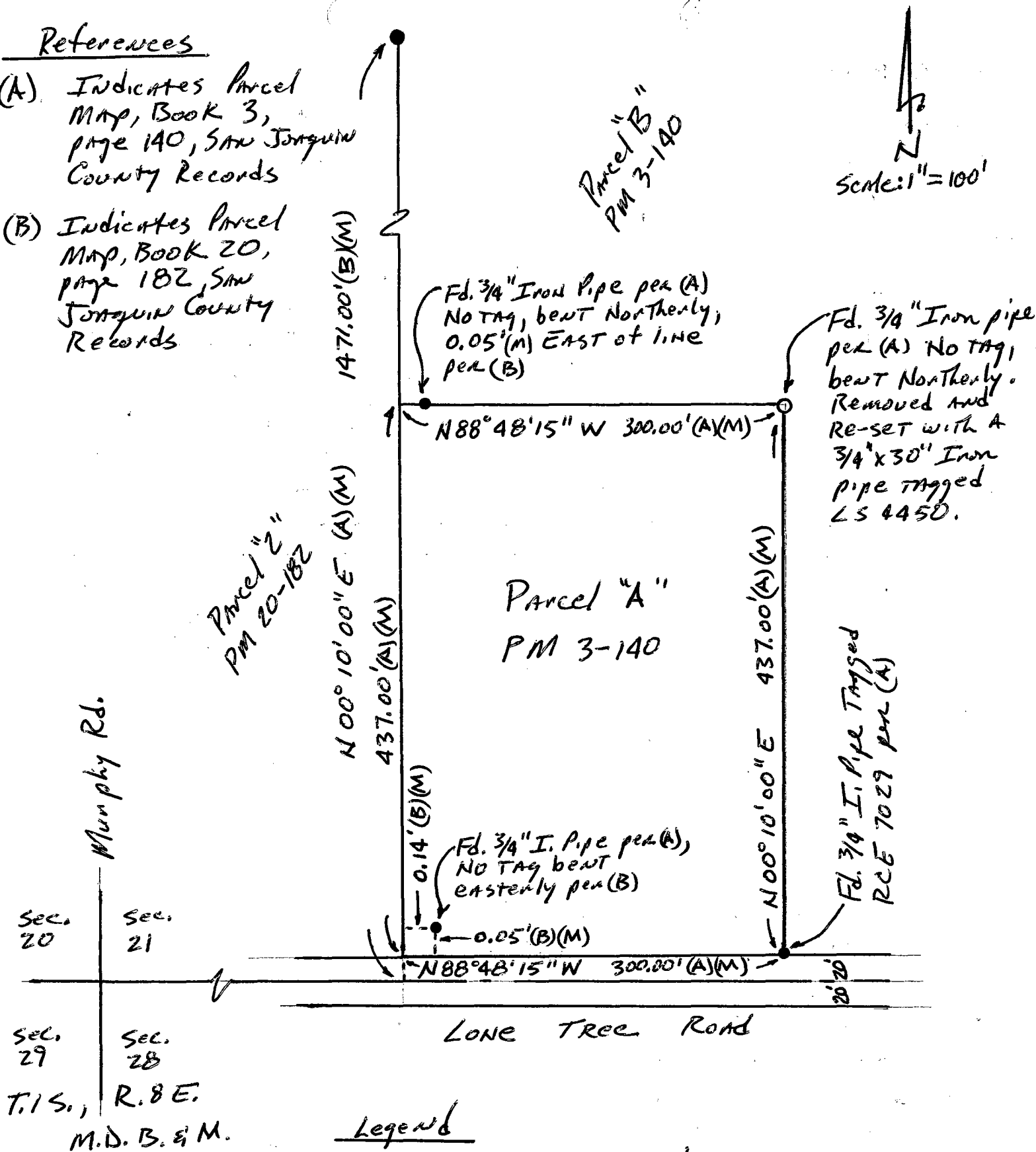
Signed Henry M. Hirata R.C.E. No. 21258
 Title County Surveyor

County Surveyors Comment _____



References

- (A) Indicates Parcel Map, Book 3, page 140, San Joaquin County Records
- (B) Indicates Parcel Map, Book 20, page 182, San Joaquin County Records



Legend

- (M) Indicates Measured
- PM Indicates Parcel Map, San Joaquin County Records