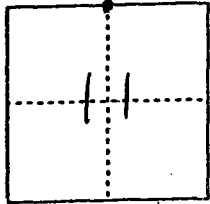


CORNER RECORD

City of \_\_\_\_\_ Document Number 00-143  
County of San Joaquin, California

Brief Legal Description NW corner of NE quarter of Section 11,  
T4N, R6E.

T4N, R6E.



CORNER TYPE

- Government Corner  Control
- Meander  Property
- Rancho  Other

Date of Survey 1-25-00

COORDINATES (Optional)

N. \_\_\_\_\_  
 E. \_\_\_\_\_  
 Zone \_\_\_\_\_ NAD27  NAD83   
 NAD83 Epoch \_\_\_\_\_  
 Elev. \_\_\_\_\_  
 Vert. Datum: NGVD29  NAVD88   
 Meas. Units: Metric  Imperial

Corner - Left as found  Found and tagged  Established  Reestablished  Rebuilt

Identification and type of corner found: Evidence used to identify or procedure used to establish or reestablish the corner:

Found 3/4" x 30" Iron pipe with plug stamped "PLS 4124"  
per swing ties on C.R. - 00-142 See sketch on  
backside

A description of the physical condition of the monument as found and as set or reset:

See sketch on backside

SURVEYOR'S STATEMENT

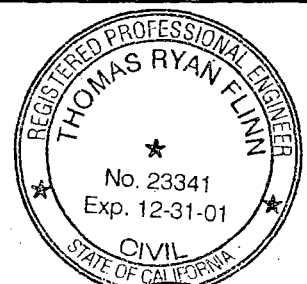
This Corner Record was prepared by me or under my direction in conformance with the Land Surveyors' Act on Feb 16, 2000.

Signed [Signature] L.S. or R.C.E. Number 23341

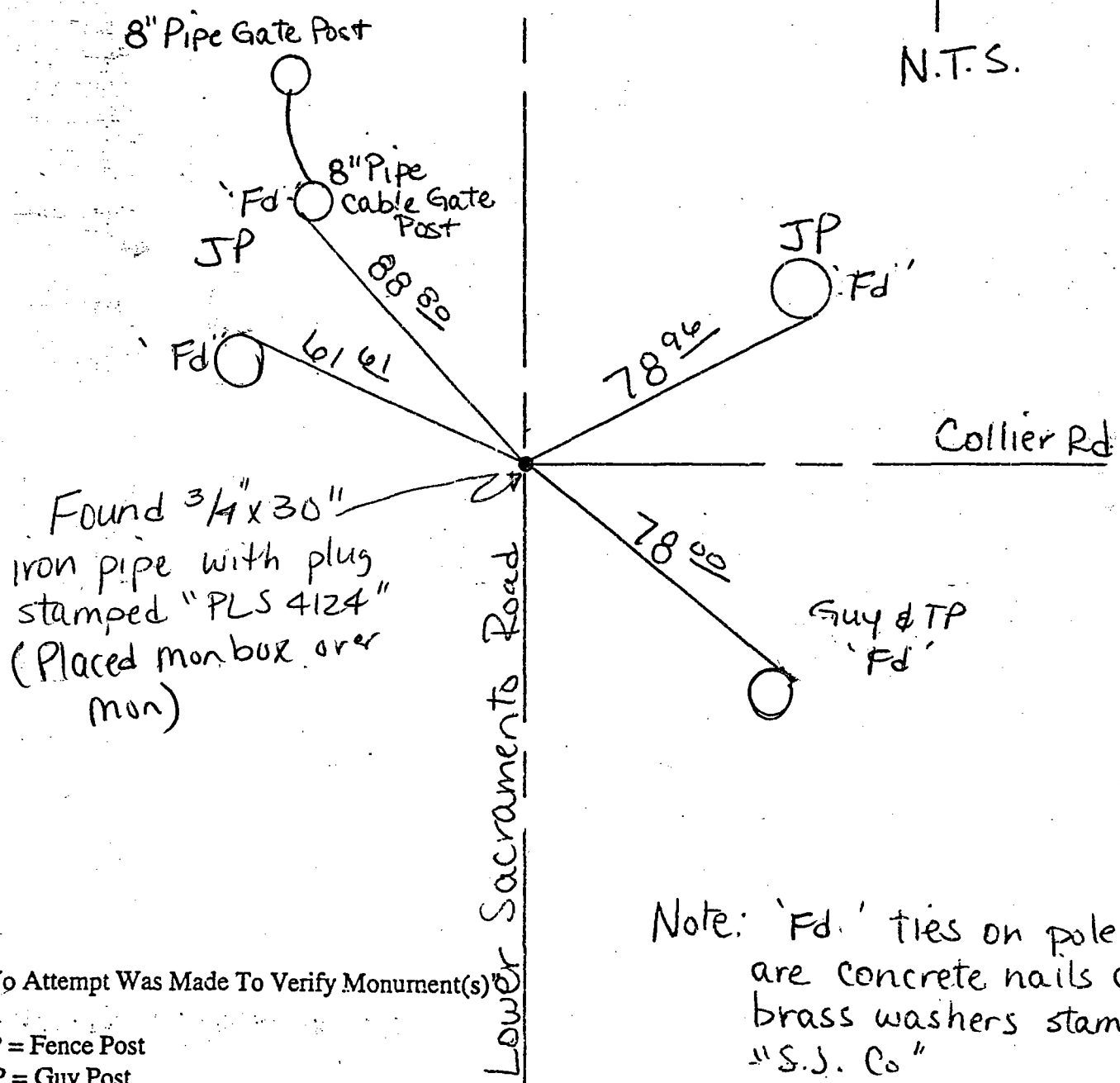
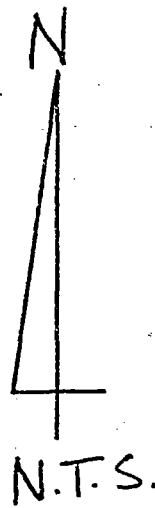
COUNTY SURVEYOR'S STATEMENT

This Corner Record was received 2-22-, 2000 and examined and filed FEBRUARY 23, 2000.

Signed Henry M. Hirata R.C.E. No. 21258  
Title County Surveyor



County Surveyors Comment \_\_\_\_\_



"No Attempt Was Made To Verify Monument(s)"

- FP = Fence Post
- GP = Guy Post
- JP = Joint Pole
- PP = Power Pole
- SP = Service Pole
- TP = Telephone Pole
- N.T.S. = Not To Scale

Set = Conc. Nails with Brass Washers Stamped "S.J. Co.", unless otherwise noted

Note: 'Fd.' ties on poles are concrete nails and brass washers stamped "S.J. Co."  
 'Fd' tie on cable gate post is a chiseled '+'