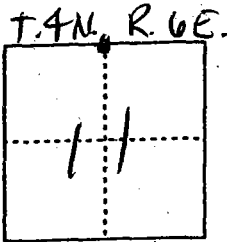


CORNER RECORD

City of \_\_\_\_\_

Document Number 00-142  
County of San Joaquin, California

Brief Legal Description NW corner of NE quarter of Section 11,  
T.4N., R.6E.



CORNER TYPE

- Government Corner  Control
- Meander  Property
- Rancho  Other

Date of Survey 11-4-99

COORDINATES (Optional)

N. \_\_\_\_\_  
 E. \_\_\_\_\_  
 Zone \_\_\_\_\_ NAD27  NAD83   
 NAD83 Epoch \_\_\_\_\_  
 Elev. \_\_\_\_\_  
 Vert. Datum: NGVD29  NAVD88   
 Meas. Units: Metric  Imperial

Corner - Left as found  Found and tagged  Established  Reestablished  Rebuilt

Identification and type of corner found: Evidence used to identify or procedure used to establish or reestablish the corner:

See sketch on backside

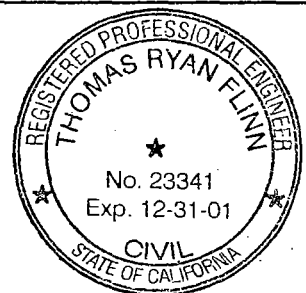
A description of the physical condition of the monument as found and as set or reset:

Found Monument in good condition  
See sketch on backside

SURVEYOR'S STATEMENT

This Corner Record was prepared by me or under my direction in conformance with the Land Surveyors' Act on Feb 16, 2000.

Signed [Signature] L.S. or R.C.E. Number 23341



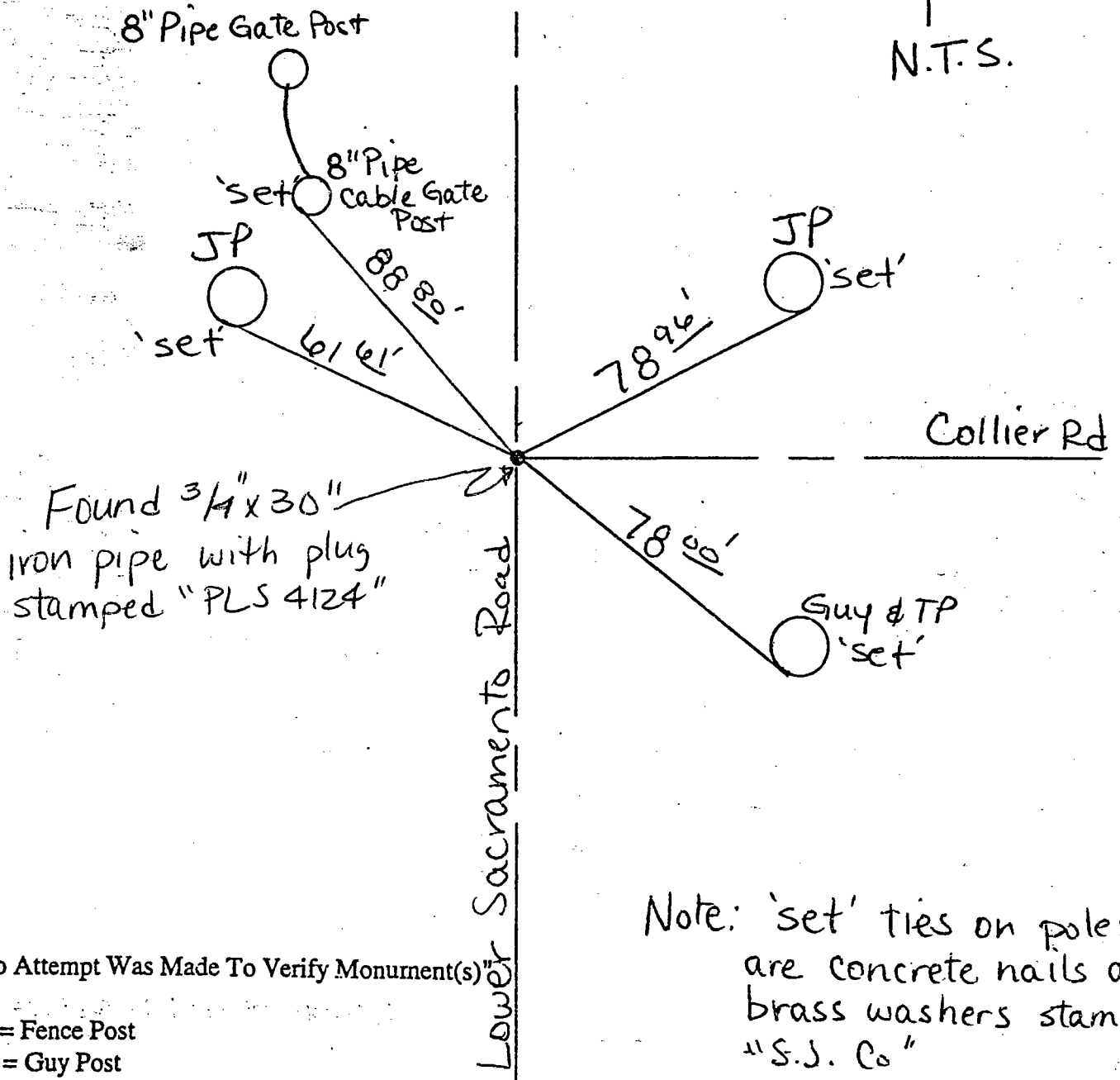
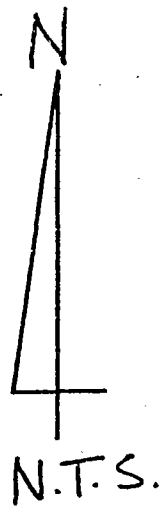
COUNTY SURVEYOR'S STATEMENT

This Corner Record was received 2-22-, 2000 and examined and filed FEBRUARY 23, 2000.

Signed Henry M. Hirata R.C.E. No. 21258  
Title County Surveyor



County Surveyors Comment \_\_\_\_\_



"No Attempt Was Made To Verify Monument(s)"

- FP = Fence Post
- GP = Guy Post
- JP = Joint Pole
- PP = Power Pole
- SP = Service Pole
- TP = Telephone Pole
- N.T.S. = Not To Scale

Set = Conc. Nails with Brass Washers Stamped "S.J. Co.", unless otherwise noted.

Note: 'set' ties on poles are concrete nails and brass washers stamped "S.J. Co." 'set' tie on cable gate post is a chiseled '+'