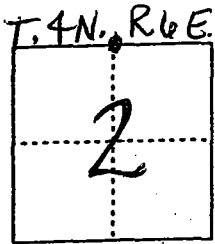


CORNER RECORD

Document Number 00-141
County of San Joaquin, California

City of _____

Brief Legal Description N/W corner of N/E quarter of Section 2, T.4N., R.6E.



CORNER TYPE

- Government Corner Control
- Meander Property
- Rancho Other

Date of Survey 1-25-00

COORDINATES (Optional)

N. _____
 E. _____
 Zone _____ NAD27 NAD83
 NAD83 Epoch _____
 Elev. _____
 Vert. Datum: NGVD29 NAVD88
 Meas. Units: Metric Imperial

Corner - Left as found Found and tagged Established Reestablished Rebuilt

Identification and type of corner found: Evidence used to identify or procedure used to establish or reestablish the corner:

Found square head nail (Not tagged) in concrete per swing ties on C.R-00-140.

See sketch on backside.

A description of the physical condition of the monument as found and as set or reset:

See sketch on backside.

SURVEYOR'S STATEMENT

This Corner Record was prepared by me or under my direction in conformance with the Land Surveyors' Act on Feb 16, 2000.

Signed [Signature] L.S. or R.C.E. Number 23341



COUNTY SURVEYOR'S STATEMENT

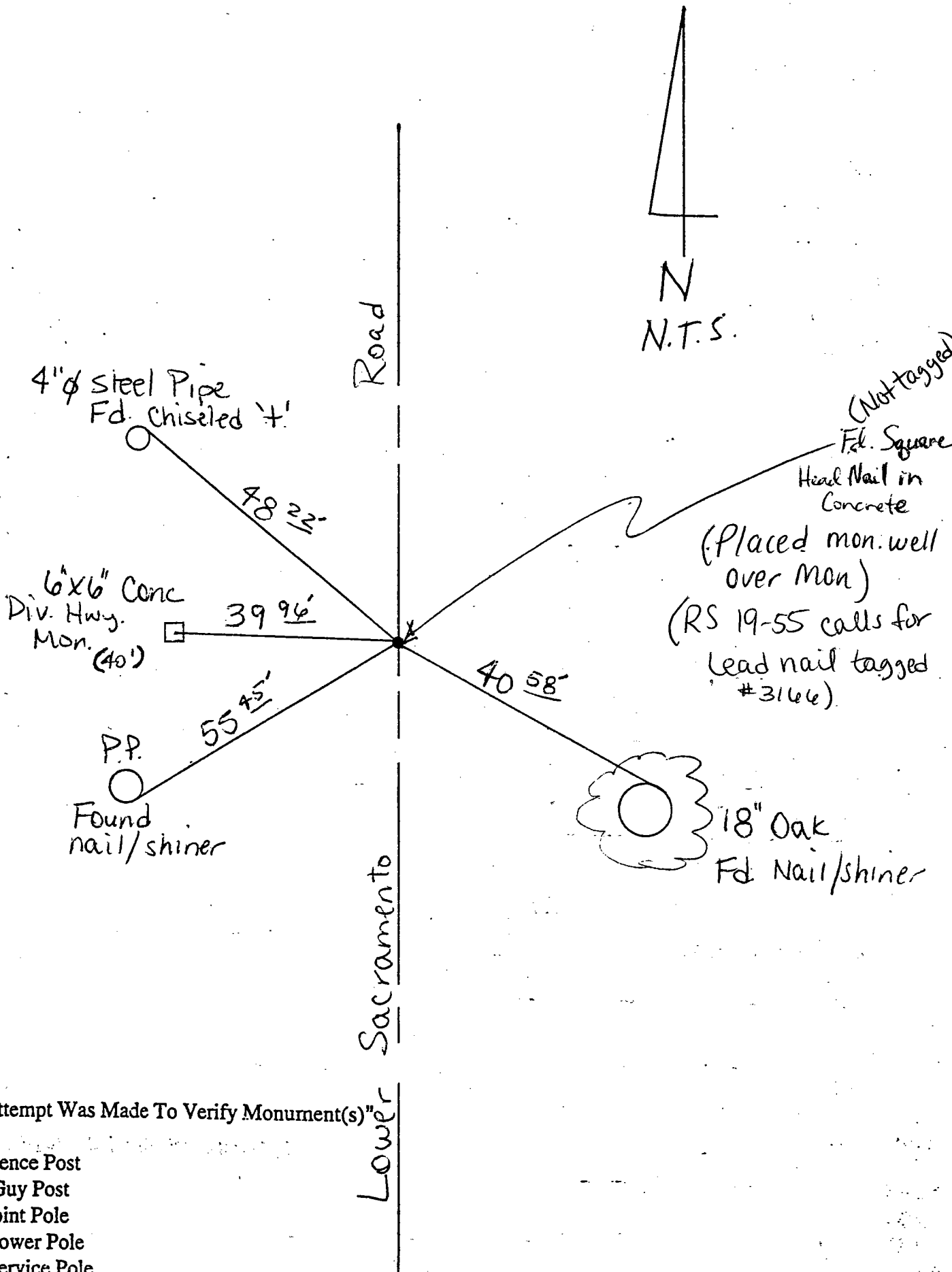
This Corner Record was received 2-22-, 2000 and examined and filed FEBRUARY 23, 2000.

Signed Henry M. Hirata R.C.E. No. 21258

Title County Surveyor



County Surveyors Comment _____



"No Attempt Was Made To Verify Monument(s)"

FP = Fence Post

GP = Guy Post

JP = Joint Pole

PP = Power Pole

SP = Service Pole

TP = Telephone Pole

N.T.S. = Not To Scale

Set = Conc. Nails with Brass Washers Stamped "S.J. Co.", unless otherwise noted