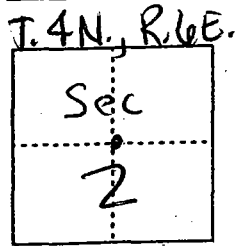


CORNER RECORD

Document Number 00-139
County of San Joaquin, California

City of _____

Brief Legal Description NW corner of SE quarter of section 2, T.4N., R.6E.



CORNER TYPE

- Government Corner Control
 Meander Property
 Rancho Other

Date of Survey 1-25-00

COORDINATES (Optional)

N. _____
 E. _____
 Zone _____ NAD27 NAD83
 NAD83 Epoch _____
 Elev. _____
 Vert. Datum: NGVD29 NAVD88
 Meas. Units: Metric Imperial

Corner - Left as found Found and tagged Established Reestablished _____ Rebuilt

Identification and type of corner found: Evidence used to identify or procedure used to establish or reestablish the corner:

Found Iron Pin per swing ties on C.R. - 00-138
See sketch on backside

A description of the physical condition of the monument as found and as set or reset:

Found Iron Pin in good condition
See sketch on backside

SURVEYOR'S STATEMENT

This Corner Record was prepared by me or under my direction in conformance with the Land Surveyors' Act on Feb 16, 2000.

Signed _____ L.S. or R.C.E. Number 23341

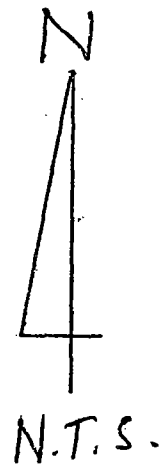
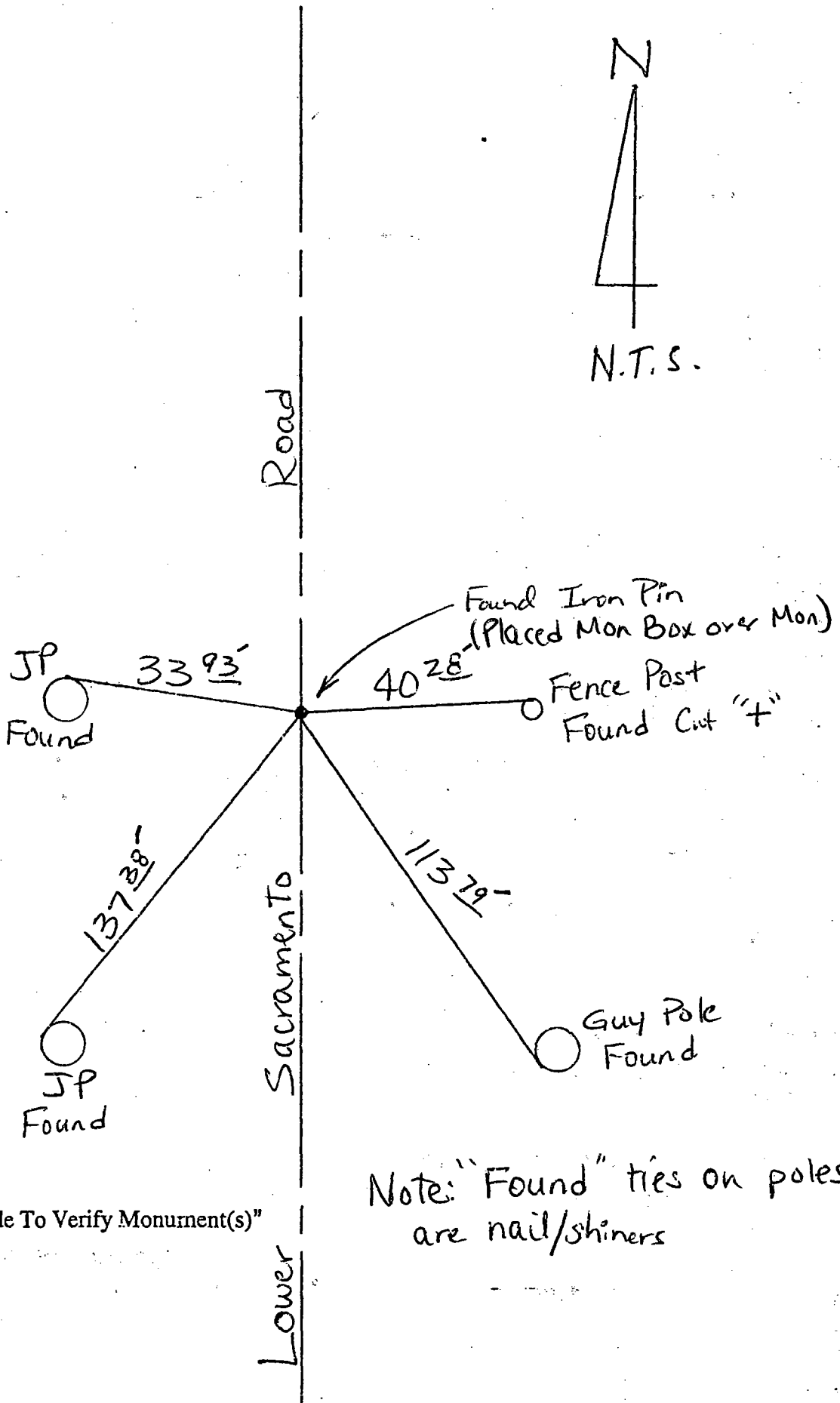
COUNTY SURVEYOR'S STATEMENT

This Corner Record was received 2-22, 2000 and examined and filed FEBRUARY 23, 2000.

Signed Henry M. Hirata R.C.E. No. 21258
 Title _____ County Surveyor



County Surveyors Comment _____



Note: "Found" ties on poles are nail/shiners

"No Attempt Was Made To Verify Monument(s)"

- FP = Fence Post
- GP = Guy Post
- JP = Joint Pole
- PP = Power Pole
- SP = Service Pole
- TP = Telephone Pole
- N.T.S. = Not To Scale

Set = Conc. Nails with Brass Washers Stamped "S.J. Co.", unless otherwise noted