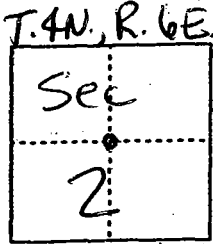


**CORNER RECORD**

Document Number 00-138  
County of San Joaquin, California

City of \_\_\_\_\_

Brief Legal Description NW corner of SE quarter of section 2, T4N, R.6E.  
per M&P 32-841



**CORNER TYPE**

Government Corner  Control   
 Meander  Property   
 Rancho  Other   
 Date of Survey 11-4-99

**COORDINATES (Optional)**

N. \_\_\_\_\_  
 E. \_\_\_\_\_  
 Zone \_\_\_\_\_ NAD27  NAD83   
 NAD83 Epoch \_\_\_\_\_  
 Elev. \_\_\_\_\_  
 Vert. Datum: NGVD29  NAVD88   
 Meas. Units: Metric  Imperial

Corner - Left as found  Found and tagged  Established  Reestablished  Rebuilt

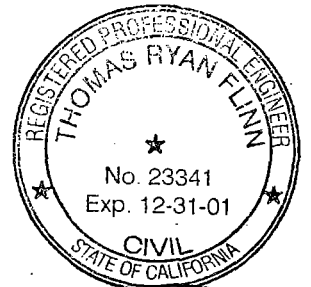
Identification and type of corner found: Evidence used to identify or procedure used to establish or reestablish the corner:  
See Sketch on Backside

A description of the physical condition of the monument as found and as set or reset:  
Found Monument in good condition  
See sketch on backside.

**SURVEYOR'S STATEMENT**

This Corner Record was prepared by me or under my direction in conformance with the Land Surveyors' Act on Feb 16, 2000.

Signed [Signature] L.S. or R.C.E. Number 23341



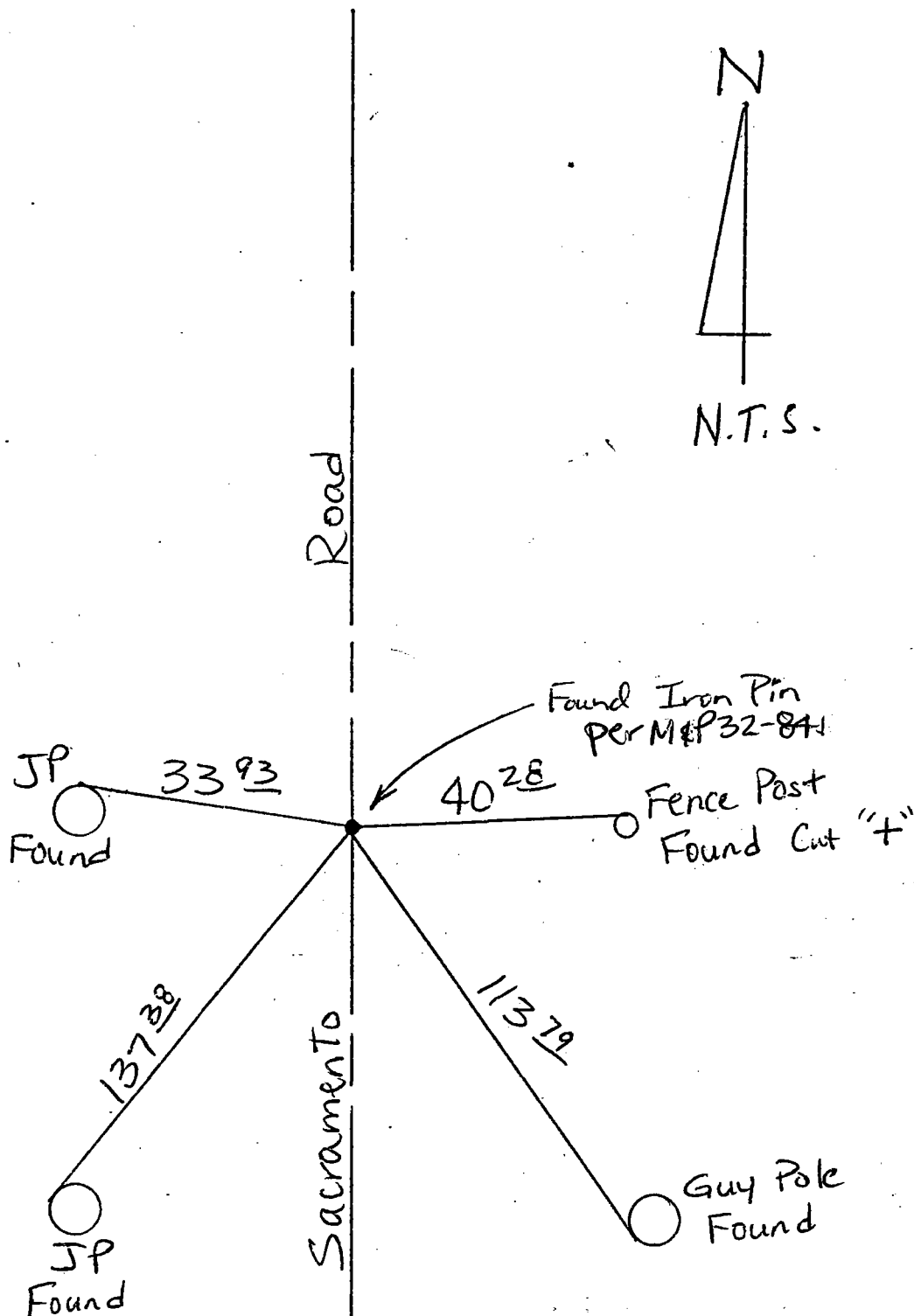
**COUNTY SURVEYOR'S STATEMENT**

This Corner Record was received 2-22-, 2000 and examined and filed FEBRUARY 23, 2000.

Signed Henry M. Hirata R.C.E. No. 21258  
Title County Surveyor



County Surveyors Comment \_\_\_\_\_



"No Attempt Was Made To Verify Monument(s)"

- FP = Fence Post
- GP = Guy Post
- JP = Joint Pole
- PP = Power Pole
- SP = Service Pole
- TP = Telephone Pole
- N.T.S. = Not To Scale

Set = Conc. Nails with Brass Washers Stamped "S.J. Co.", unless otherwise noted

Note: "Found" ties on poles are nail/shiners