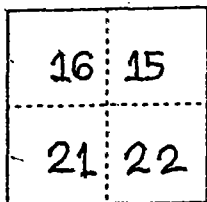


CORNER RECORD

Document Number 00-136
County of San Joaquin, California

City of _____

Brief Legal Description N/W CORNER OF SECTION 22, T.3N., R.7E.



CORNER TYPE

Government Corner Control
 Meander Property
 Rancho Other
 Date of Survey 12-30-99

COORDINATES (Optional)

N. _____
 E. _____
 Zone _____ NAD27 NAD83
 NAD83 Epoch _____
 Elev. _____
 Vert. Datum: NGVD29 NAVD88
 Meas. Units: Metric Imperial

T.3N., R.7E.

Corner - Left as found Found and tagged Established Reestablished Rebuilt

Identification and type of corner found: Evidence used to identify or procedure used to establish or reestablish the corner:

FOUND PIN & WASHER PER R.S. 28-38 PER SWING TIES ON C.R. 00-135 SEE SKETCH ON BACKSIDE

A description of the physical condition of the monument as found and as set or reset: FOUND PIN & WASHER PER R.S. 28-38 IN GOOD CONDITION AND PLACED MONUMENT WELL OVER MONUMENT

SURVEYOR'S STATEMENT

This Corner Record was prepared by me or under my direction in conformance with the Land Surveyors' Act on Feb 11, 2000.

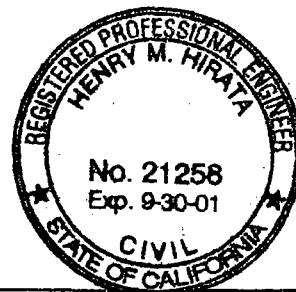
Signed [Signature] L.S. or R.C.E. Number 23341



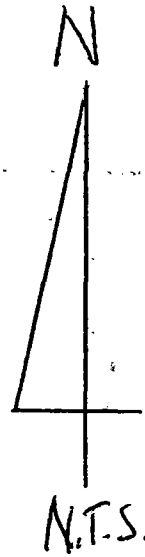
COUNTY SURVEYOR'S STATEMENT

This Corner Record was received 2-15, 2000 and examined and filed 2-15, 2000.

Signed Henry M. Hirata R.C.E. No. 21258
Title County Surveyor

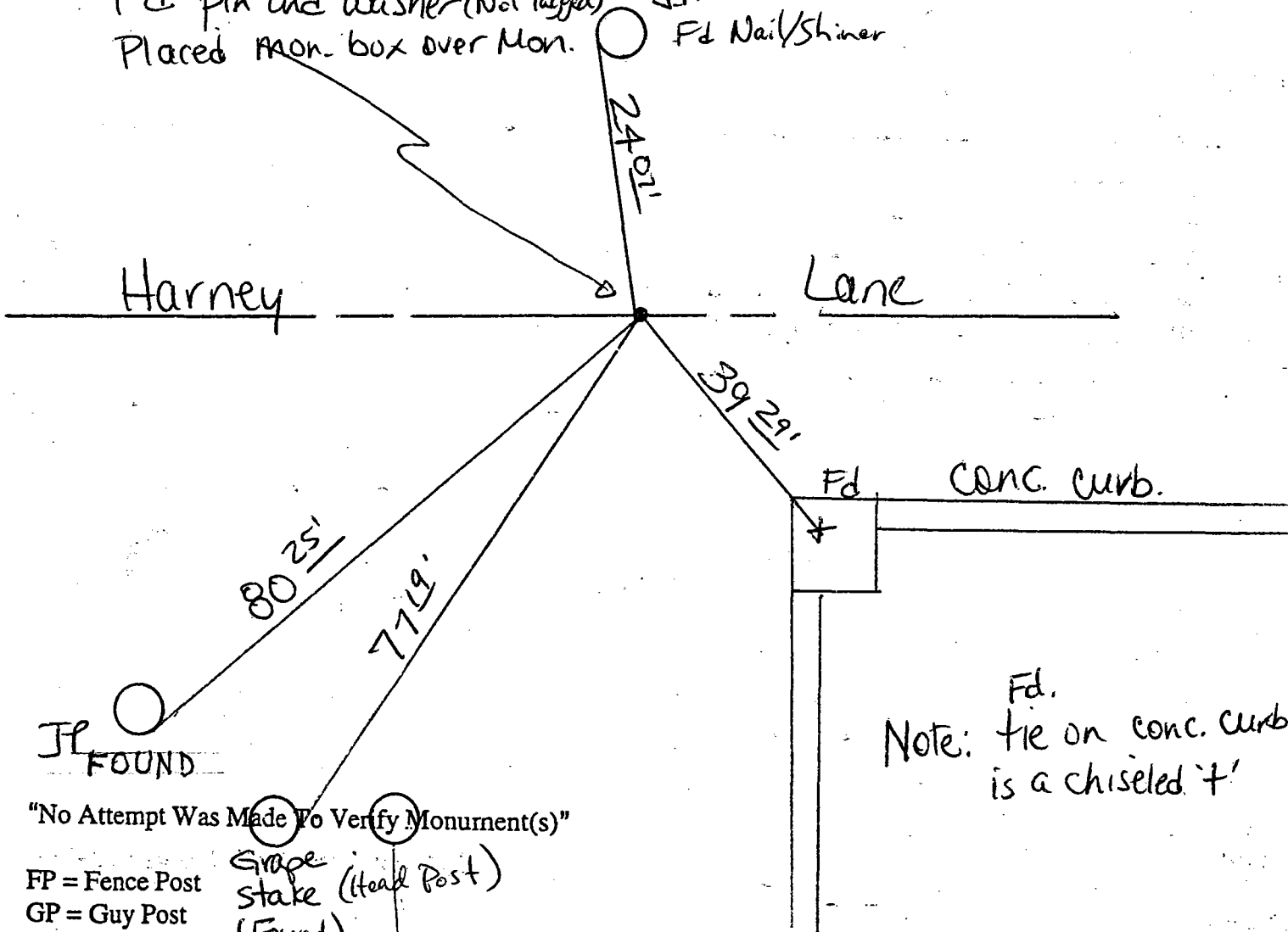


County Surveyors Comment _____



Fd pin and washer (Not Tagged)
Placed Mon. box over Mon.

J.P. Fd Nail/Shiner



"No Attempt Was Made To Verify Monument(s)"

- FP = Fence Post
- GP = Guy Post
- JP = Joint Pole
- PP = Power Pole
- SP = Service Pole
- TP = Telephone Pole
- N.T.S. = Not To Scale

Grade Stake (Head Post)
(Found)

Fd.
Note: tie on conc. curb
is a chiseled 'f'

"Found" means Conc. Nail with Brass
washer stamped "S.J. Co."

FOUND = Conc. Nails with Brass Washers Stamped "S.J. Co.", unless otherwise noted