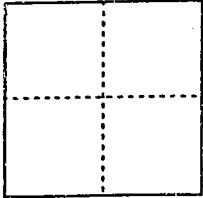


CORNER RECORD

Document Number 00-134
County of San Joaquin, California

City of _____

Brief Legal Description Santa Fe Road 1774'± & 1775'± Southeasterly of Orange Avenue per F.B. 658, pg. 34.



CORNER TYPE

Government Corner Control
Meander Property
Rancho Other
Date of Survey 12-13-99

COORDINATES (Optional)

N. _____
E. _____
Zone _____ NAD27 NAD83
NAD83 Epoch _____
Elev. _____
Vert. Datum: NGVD29 NAVD88
Meas. Units: Metric Imperial

Corner - Left as found Found and tagged Established Reestablished Rebuilt

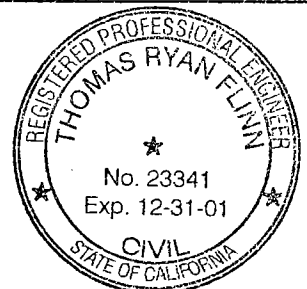
Identification and type of corner found: Evidence used to identify or procedure used to establish or reestablish the corner:
LOCATION OF
Reestablished / Fed. Nails & Shiners (Not Tagged) per F.B. 658, pg. 34
per Swing, on C.R. - 00-133.
TIES See Sketch on Backside

A description of the physical condition of the monument as found and as set or reset:
See Sketch on Backside

SURVEYOR'S STATEMENT

This Corner Record was prepared by me or under my direction in conformance with the Land Surveyors' Act on Feb 16, 2000.

Signed [Signature] L.S. or R.C.E. Number 23341



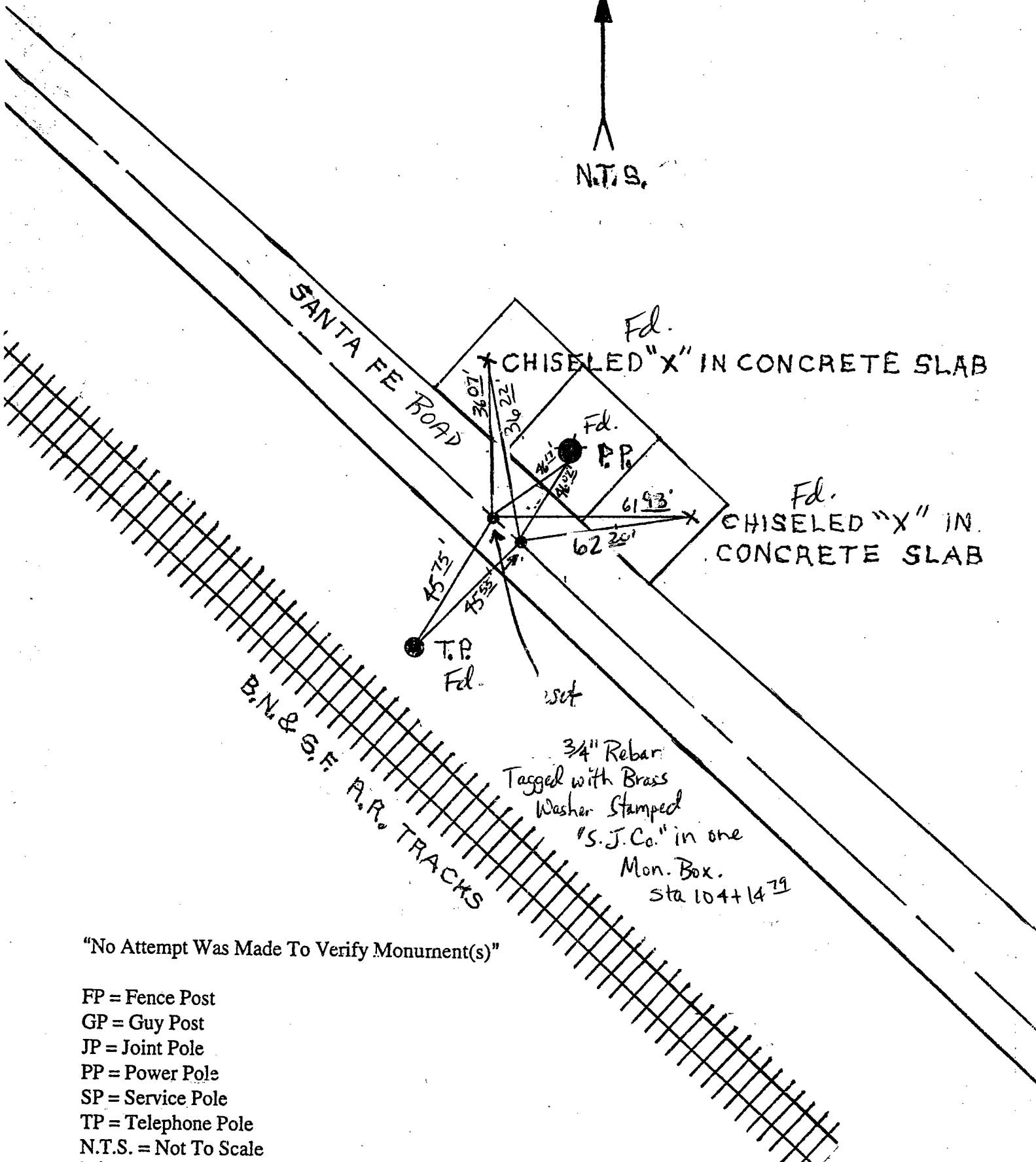
COUNTY SURVEYOR'S STATEMENT

This Corner Record was received 2-22-, 2000 and examined and filed February 23, 2000.

Signed Henry M. Hirata R.C.E. No. 21258
Title County Surveyor



County Surveyors Comment _____



SANTA FE ROAD

B.N. & S.F. R.R. TRACKS

Fd.
CHISELED "X" IN CONCRETE SLAB

Fd.
PP

Fd.
CHISELED "X" IN CONCRETE SLAB

15' 7 1/2"
15' 3 1/2"
36' 0"
36' 2 1/2"
61' 9 1/2"
62' 2 1/2"

T.P. Fd.

set

3/4" Rebar
Tagged with Brass
Washer Stamped
"S.J.Co." in one
Mon. Box.
Sta 104+14.79

"No Attempt Was Made To Verify Monument(s)"

- FP = Fence Post
- GP = Guy Post
- JP = Joint Pole
- PP = Power Pole
- SP = Service Pole
- TP = Telephone Pole
- N.T.S. = Not To Scale
- Fd. = Conc. Nails with Brass Washers Stamped "S.J. Co.", unless otherwise noted