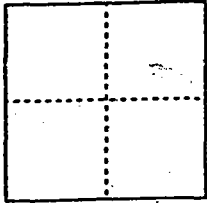


CORNER RECORD

Document Number 00-132  
County of San Joaquin, California

City of \_\_\_\_\_

Brief Legal Description THE INTERSECTION OF HARNEY LANE AND HIBBARD ROAD



CORNER TYPE

- Government Corner  Control
- Meander  Property
- Rancho  Other

Date of Survey 12-30-99

COORDINATES (Optional)

N. \_\_\_\_\_  
 E. \_\_\_\_\_  
 Zone \_\_\_\_\_ NAD27  NAD83   
 NAD83 Epoch \_\_\_\_\_  
 Elev. \_\_\_\_\_  
 Vert. Datum: NGVD29  NAVD88   
 Meas. Units: Metric  Imperial

Corner - Left as found  Found and tagged  Established  Reestablished \_\_\_\_\_ Rebuilt

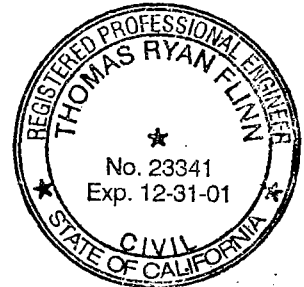
Identification and type of corner found: Evidence used to identify or procedure used to establish or reestablish the corner:  
FOUND BOLT & WASHER PER. P.M. 7-144 PER. SWING TIES ON C.R. 00-75. SEE SKETCH ON BACKSIDE

A description of the physical condition of the monument as found and as set or reset: FOUND BOLT & WASHER PER P.M. 7-144 IN GOOD CONDITION AND PLACED MONUMENT WELL OVER MONUMENT

SURVEYOR'S STATEMENT

This Corner Record was prepared by me or under my direction in conformance with the Land Surveyors' Act on Feb 11, 2000.

Signed \_\_\_\_\_ L.S. or R.C.E. Number 23341



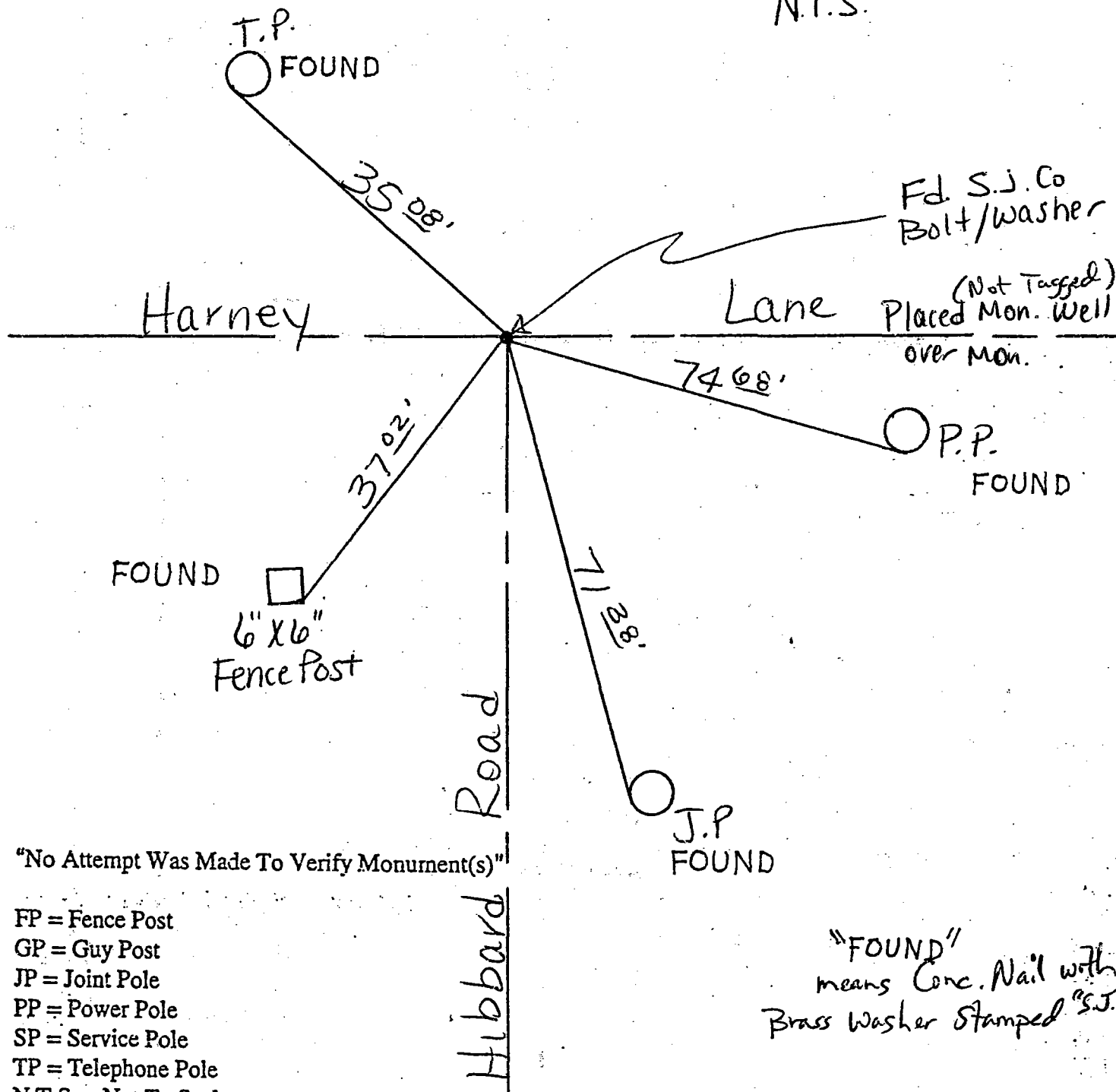
COUNTY SURVEYOR'S STATEMENT

This Corner Record was received 2-15-, 2000 and examined and filed 2-15, 2000.

Signed Henry M. Hirata R.C.E. No. 21258  
Title County Surveyor



County Surveyors Comment \_\_\_\_\_



"No Attempt Was Made To Verify Monument(s)"

- FP = Fence Post
- GP = Guy Post
- JP = Joint Pole
- PP = Power Pole
- SP = Service Pole
- TP = Telephone Pole
- N.T.S. = Not To Scale

"FOUND" means Conc. Nail with Brass Washer Stamped "S.J."

FOUND = Conc. Nails with Brass Washers Stamped "S.J. Co.", unless otherwise noted