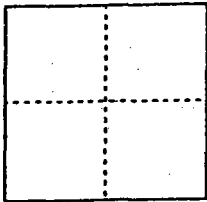


CORNER RECORD

Document Number 00-131
County of San Joaquin, California

City of _____

Brief Legal Description THE MONUMENT IS ON HARNEY LANE 2,959± E/O
ALPINE ROAD



CORNER TYPE

- Government Corner Control
- Meander Property
- Rancho Other

Date of Survey 12-30-99

COORDINATES (Optional)

N. _____
 E. _____
 Zone _____ NAD27 NAD83
 NAD83 Epoch _____
 Elev. _____
 Vert. Datum: NGVD29 NAVD88
 Meas. Units: Metric Imperial

Corner - Left as found Found and tagged Established Reestablished Rebuilt

Identification and type of corner found: Evidence used to identify or procedure used to establish or reestablish the corner:

FOUND PIN & WASHER
PER SWING TIES ON C.R.-00-80 SEE SKETCH ON
BACKSIDE

A description of the physical condition of the monument as found and as set or reset: FOUND PIN &
WASHER IN GOOD CONDITION AND
PLACED MONUMENT WELL OVER MONUMENT

SURVEYOR'S STATEMENT

This Corner Record was prepared by me or under my direction in conformance with the Land Surveyors' Act on Feb 11, 2000.

Signed _____ L.S. or R.C.E. Number 23341



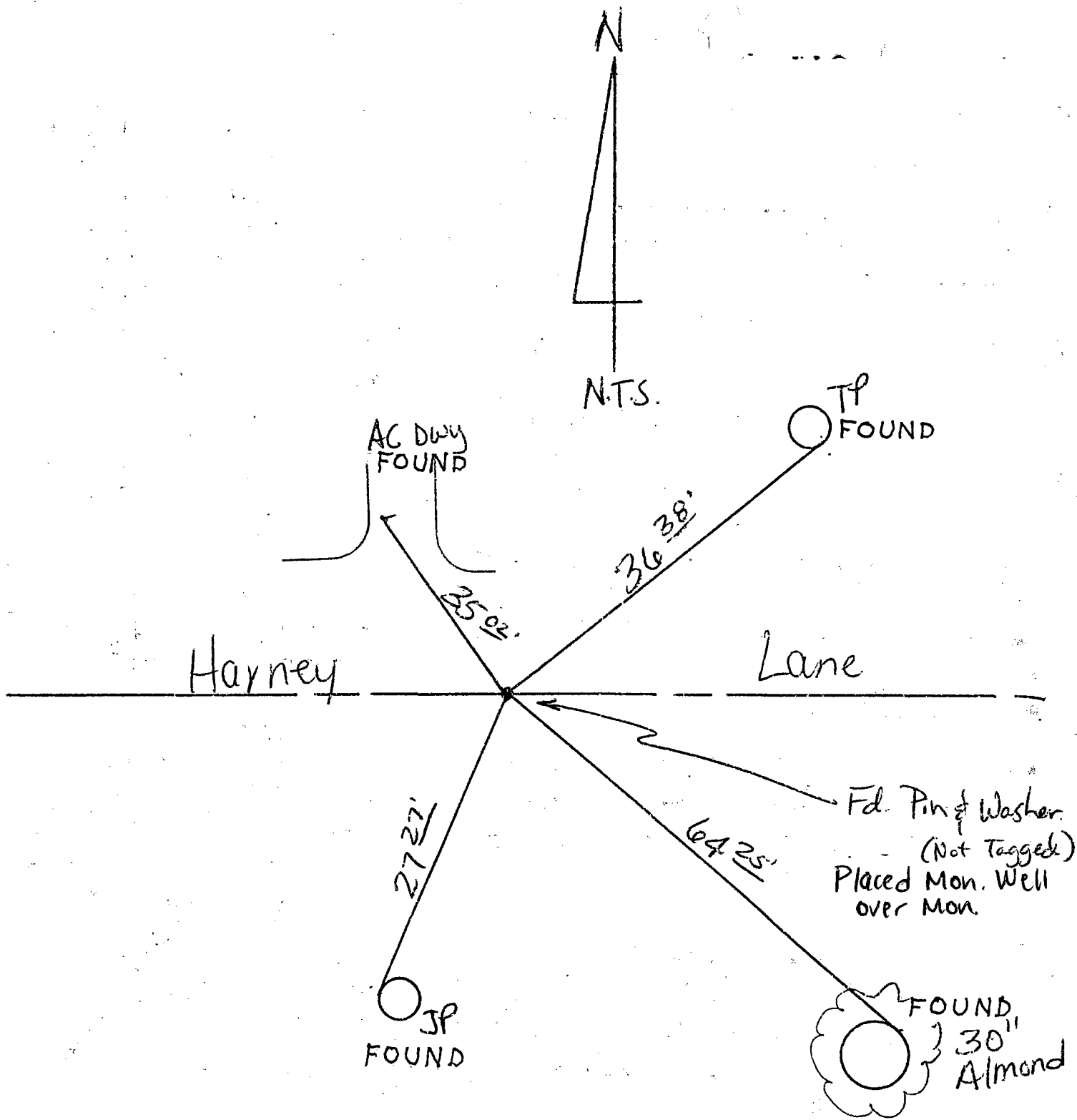
COUNTY SURVEYOR'S STATEMENT

This Corner Record was received 2-15-, 2000 and examined and filed 2-15, 2000.

Signed Henry M. Hirata R.C.E. No. 21258
Title County Surveyor



County Surveyors Comment _____



"No Attempt Was Made To Verify Monument(s)"

"Found" means Conc. Nails with
Brass Washers Stamped "S.J.Co."

- FP = Fence Post
- GP = Guy Post
- JP = Joint Pole
- PP = Power Pole
- SP = Service Pole
- TP = Telephone Pole
- N.T.S. = Not To Scale

FOUND = Conc. Nails with Brass Washers Stamped "S.J. Co.", unless otherwise noted