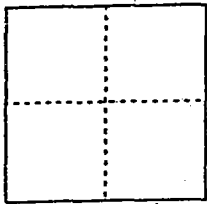


CORNER RECORD

Document Number 00-126
County of San Joaquin, California

City of _____

Brief Legal Description MONUMENT IS ON HARNEY LANE 3,396± EAST OF ALPINE ROAD



CORNER TYPE

Government Corner Control
Meander Property
Rancho Other

Date of Survey 12-30-99

COORDINATES (Optional)

N. _____
E. _____
Zone _____ NAD27 NAD83
NAD83 Epoch _____
Elev. _____
Vert. Datum: NGVD29 NAVD88
Meas. Units: Metric Imperial

Corner - Left as found Found and tagged Established Reestablished _____ Rebuilt

Identification and type of corner found: Evidence used to identify or procedure used to establish or reestablish the corner:

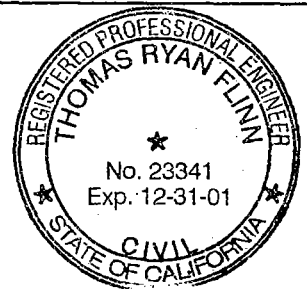
NOT TAGGED, FOUND PIN & WASHER,
C.R. 00-125. SEE SKETCH ON BACKSIDE PER. SWING TIES ON

A description of the physical condition of the monument as found and as set or reset: FOUND PIN & WASHER PER. C.R. 00-125 IN GOOD CONDITION AND PLACED MONUMENT WELL OVER MONUMENT

SURVEYOR'S STATEMENT

This Corner Record was prepared by me or under my direction in conformance with the Land Surveyors' Act on Feb 11, 2000.

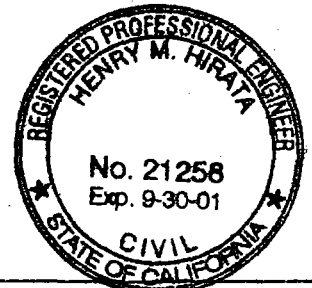
Signed _____ L.S. or R.C.E. Number 23341



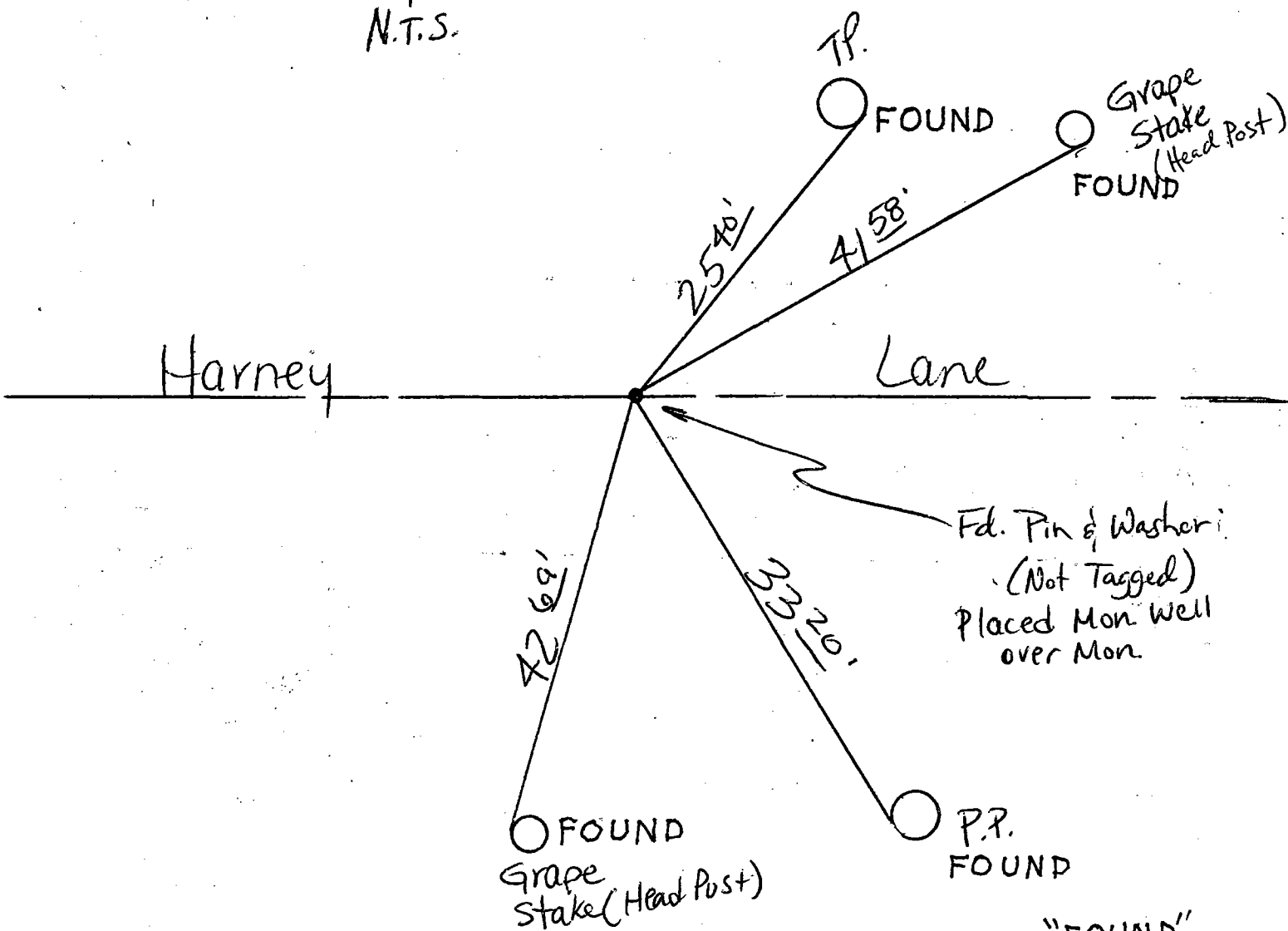
COUNTY SURVEYOR'S STATEMENT

This Corner Record was received 2-15, 2000 and examined and filed 2-15, 2000.

Signed Henry M. Hirata R.C.E. No. 21258
Title County Surveyor



County Surveyors Comment _____



"No Attempt Was Made To Verify Monument(s)."

- FP = Fence Post
- GP = Guy Post
- JP = Joint Pole
- PP = Power Pole
- SP = Service Pole
- TP = Telephone Pole
- N.T.S. = Not To Scale

FOUND = Conc. Nails with Brass Washers Stamped "S.J. Co.", unless otherwise noted

"FOUND"
 Note: All ties are nails
 & washers stamped
 "S.J. Co."