

CORNER RECORD

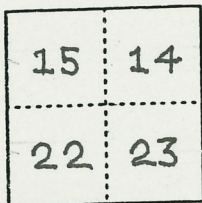
Document Number 00-120
County of San Joaquin, California

City of _____

Brief Legal Description THE NORTHWEST CORNER OF SECTION 23,
T.3N., R.7E.

CORNER TYPE

COORDINATES (Optional)



T.3N., R.7E.

Government Corner Control
 Meander Property
 Rancho Other

Date of Survey 11-9-99

N. _____
 E. _____
 Zone _____ NAD27 NAD83
 NAD83 Epoch _____
 Elev. _____
 Vert. Datum: NGVD29 NAVD88
 Meas. Units: Metric Imperial

Corner - Left as found Found and tagged Established Reestablished Rebuilt

Identification and type of corner found: Evidence used to identify or procedure used to establish or reestablish the corner:
SEE SKETCH ON BACKSIDE

A description of the physical condition of the monument as found and as set or reset:
FOUND MONUMENT IN GOOD CONDITION
SEE SKETCH ON BACKSIDE

SURVEYOR'S STATEMENT

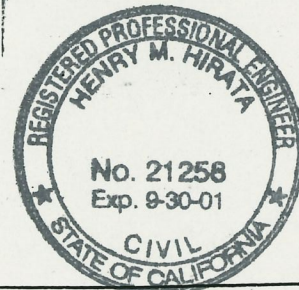
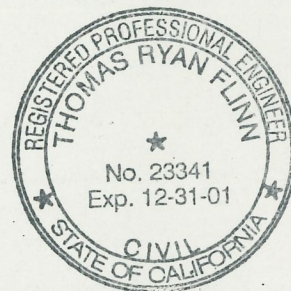
This Corner Record was prepared by me or under my direction in conformance with
 the Land Surveyors' Act on Feb 11, 2000.

Signed _____ L.S. or R.C.E. Number 23341

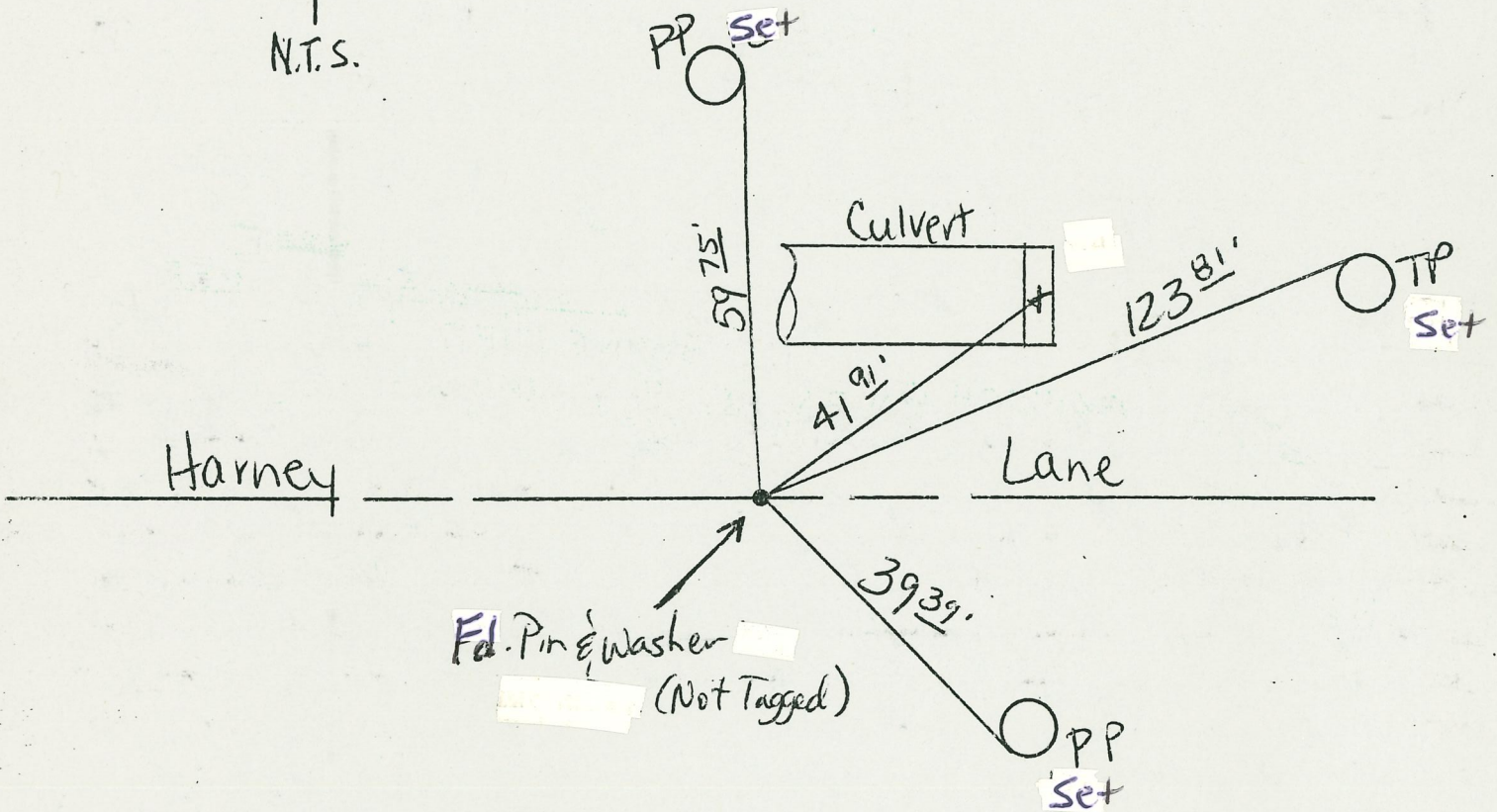
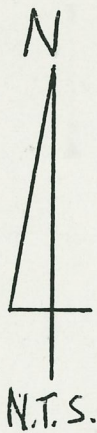
COUNTY SURVEYOR'S STATEMENT

This Corner Record was received 2-15, 2000 and examined
 and filed 2-15, 2000.

Signed Henry M. Hirata R.C.E. No. 21258
 Title _____ County Surveyor



County Surveyors Comment _____



Note: Tie on culvert is a chiseled '+'

Set [redacted]

"No Attempt Was Made To Verify Monument(s)"

FP = Fence Post

GP = Guy Post

JP = Joint Pole

PP = Power Pole

SP = Service Pole

TP = Telephone Pole

N.T.S. = Not To Scale

Set = Conc. Nails with Brass Washers Stamped "S.J. Co.", unless otherwise noted