

CORNER RECORD

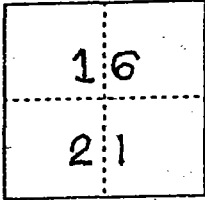
Document Number 00-117
County of San Joaquin, California

City of _____

Brief Legal Description S/E CORNER OF S/W 1/4 OF SECTION 16, T3N R7E

CORNER TYPE

COORDINATES (Optional)



Government Corner Control
Meander Property
Rancho Other
Date of Survey 12-30-99

N. _____
E. _____
Zone _____ NAD27 NAD83
NAD83 Epoch _____
Elev. _____
Vert. Datum: NGVD29 NAVD88
Meas. Units: Metric Imperial

T.3N., R.7E.

Corner - Left as found Found and tagged Established Reestablished _____ Rebuilt

Identification and type of corner found: Evidence used to identify or procedure used to establish or reestablish the corner:

FOUND BOLT & WASHER PER
R.S. 21-114 PER SWING TIES ON C.R.-0-77. SEE SKETCH
ON BACKSIDE

A description of the physical condition of the monument as found and as set or reset: FOUND BOLT &
WASHER PER R.S. 21-114 IN GOOD CONDITION AND PLACED
WELL OVER THE MONUMENT.

SURVEYOR'S STATEMENT

This Corner Record was prepared by me or under my direction in conformance with the Land Surveyors' Act on Feb 11, 2000.

Signed _____ L.S. or R.C.E. Number 23341



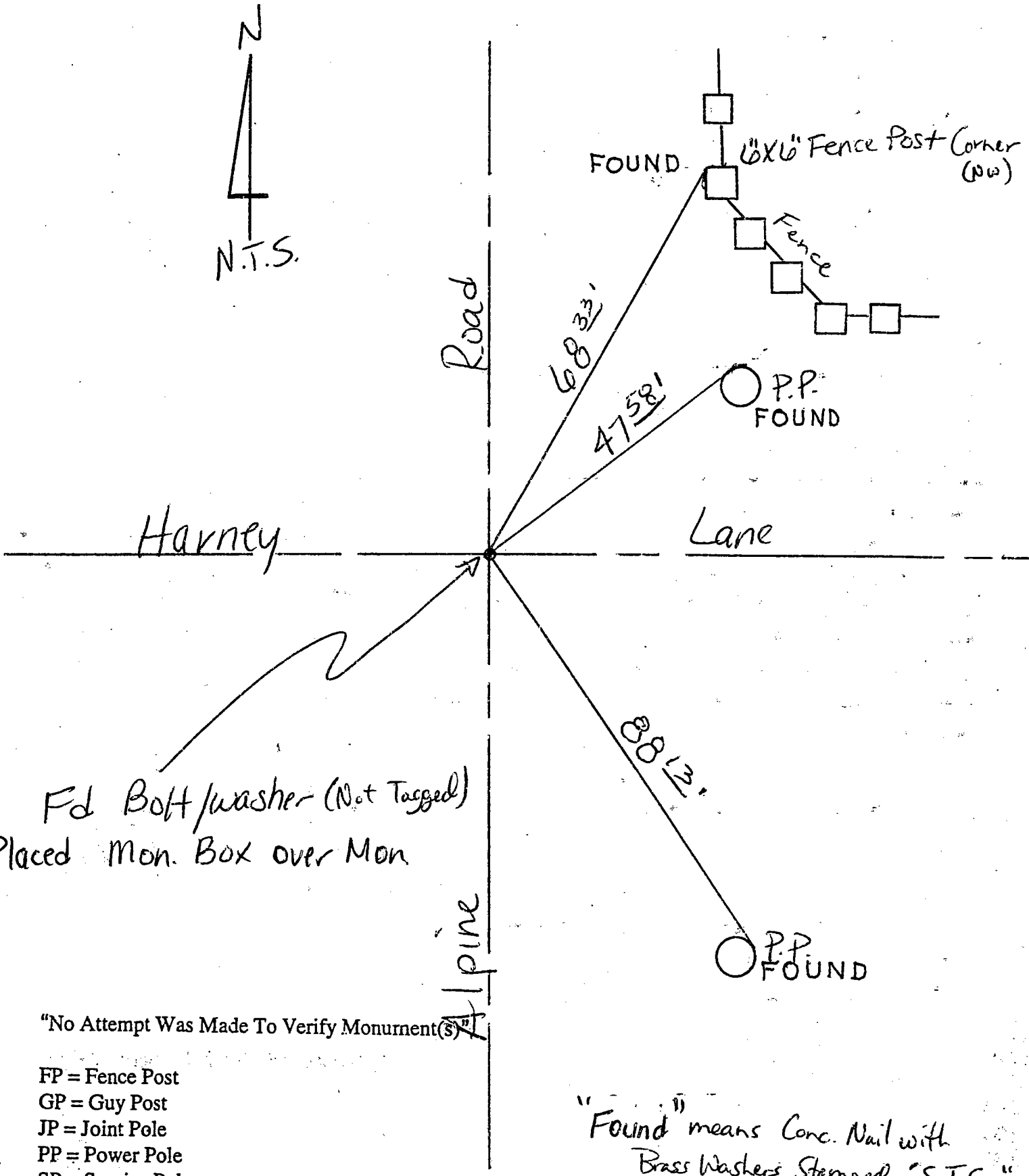
COUNTY SURVEYOR'S STATEMENT

This Corner Record was received 2-15, 2000 and examined and filed 2-15, 2000.

Signed Henry M. Hirata R.C.E. No. 21258
Title County Surveyor



County Surveyors Comment _____



Fd Bolt/washer (Not Tagged)
Placed Mon. Box over Mon

"No Attempt Was Made To Verify Monument(s)"

- FP = Fence Post
- GP = Guy Post
- JP = Joint Pole
- PP = Power Pole
- SP = Service Pole
- TP = Telephone Pole
- N.T.S. = Not To Scale

"Found" means Conc. Nail with Brass Washers Stamped "S.J. Co."

FOUND = Conc. Nails with Brass Washers Stamped "S.J. Co.", unless otherwise noted