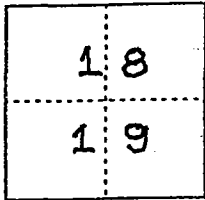


CORNER RECORD

City of _____ Document Number 00-115
County of San Joaquin, California

Brief Legal Description MONUMENT IS AT THE INTERSECTION OF HARNEY LANE & WELLS LANE (1/4 1/4 CORNER)



T.3N., R.7E.

CORNER TYPE

- Government Corner Control
- Meander Property
- Rancho Other

Date of Survey 12-30-99

COORDINATES (Optional)

N. _____
 E. _____
 Zone _____ NAD27 NAD83
 NAD83 Epoch _____
 Elev. _____
 Vert. Datum: NGVD29 NAVD88
 Meas. Units: Metric Imperial

Corner - Left as found Found and tagged Established Reestablished Rebuilt

Identification and type of corner found: Evidence used to identify or procedure used to establish or reestablish the corner:

FOUND BOLT & WASHER PER R.S. 21-3 PER SWING TIES ON C.R. 00-74. SEE SKETCH ON BACKSIDE.

A description of the physical condition of the monument as found and as set or reset: FOUND BOLT & WASHER PER R.S. 21-3 IN GOOD CONDITION AND PLACED MONUMENT WELL OVER MONUMENT. SEE SKETCH ON BACKSIDE

SURVEYOR'S STATEMENT

This Corner Record was prepared by me or under my direction in conformance with the Land Surveyors' Act on Feb 11, 2000.

Signed _____ L.S. or R.C.E. Number 23341



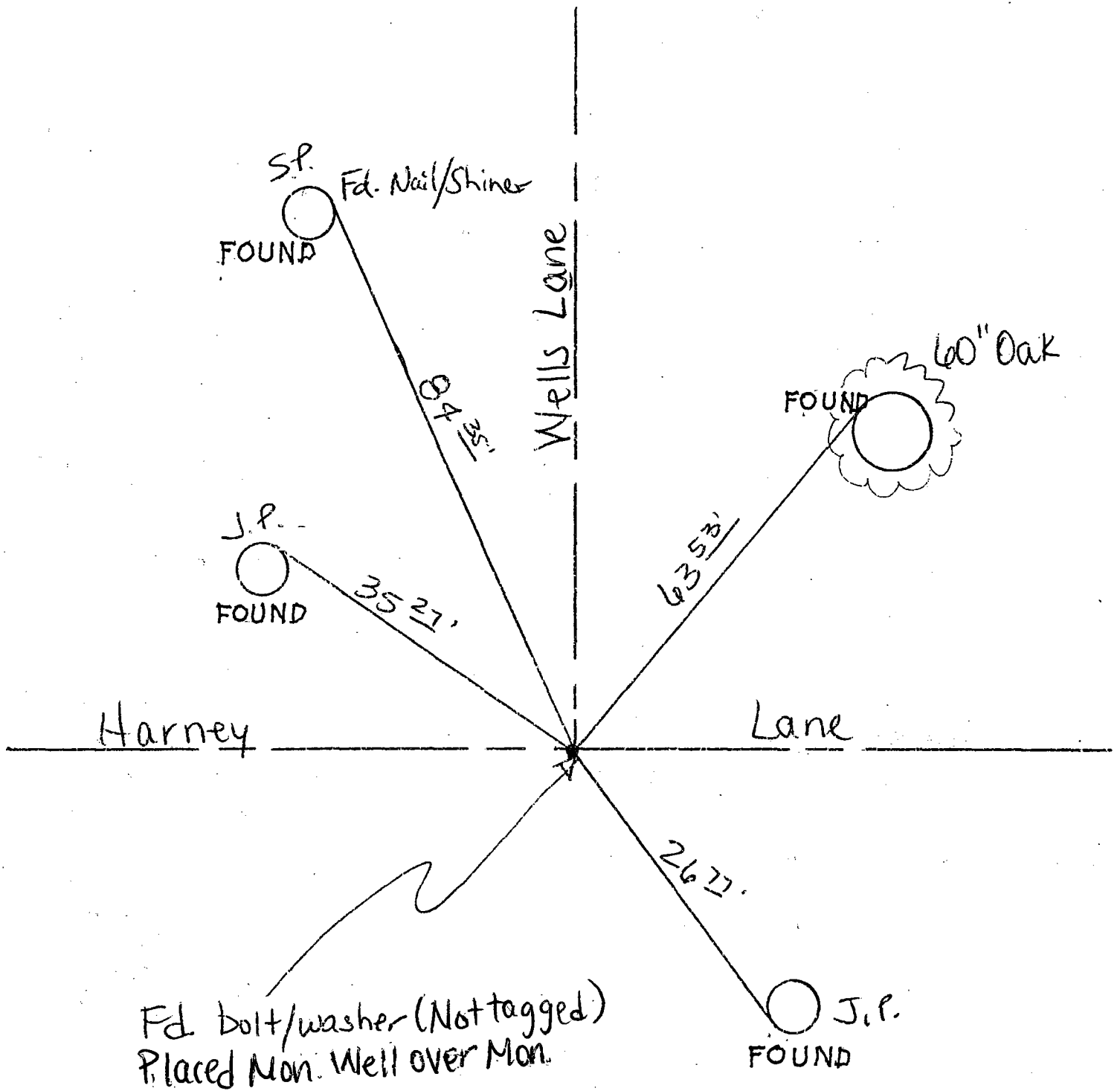
COUNTY SURVEYOR'S STATEMENT

This Corner Record was received 2-15, 2000 and examined and filed 2-15, 2000.

Signed Henry M. Hirata R.C.E. No. 21258
Title County Surveyor



County Surveyors Comment _____

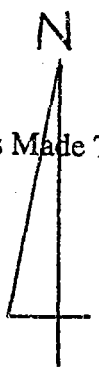


Fd. bolt/washer (Not tagged)
Placed Mon. Well over Mon.

"FOUND"
Note: All ties are nails & washers stamped "S.J. Co."

"No Attempt Was Made To Verify Monument(s)"

- FP = Fence Post
- GP = Guy Post
- JP = Joint Pole
- PP = Power Pole
- SP = Service Pole
- TP = Telephone Pole



N.T.S.

Set = Conc. Nails with Brass Washers Stamped "S.J. Co.", unless otherwise noted