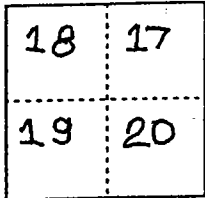


CORNER RECORD

Document Number 00-113
County of San Joaquin, California

City of _____

Brief Legal Description N/W CORNER OF SECTION 20, T.3N., R.7E.



T.3N., R.7E.

CORNER TYPE

- Government Corner Control
- Meander Property
- Rancho Other

Date of Survey 11-9-99

COORDINATES (Optional)

- N. _____
- E. _____
- Zone _____ NAD27 NAD83
- NAD83 Epoch _____
- Elev. _____
- Vert. Datum: NGVD29 NAVD88
- Meas. Units: Metric Imperial

Corner - Left as found Found and tagged Established Reestablished Rebuilt

Identification and type of corner found: Evidence used to identify or procedure used to establish or reestablish the corner:

SEE SKETCH ON BACKSIDE

A description of the physical condition of the monument as found and as set or reset:

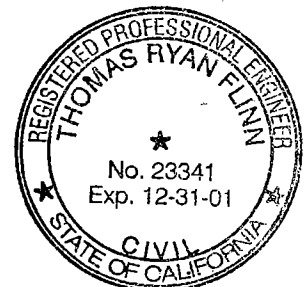
FOUND MONUMENT IN GOOD CONDITION

SEE SKETCH ON BACKSIDE

SURVEYOR'S STATEMENT

This Corner Record was prepared by me or under my direction in conformance with the Land Surveyors' Act on Feb 11, 2000.

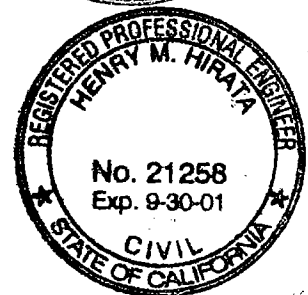
Signed _____ L.S. or R.C.E. Number 23341



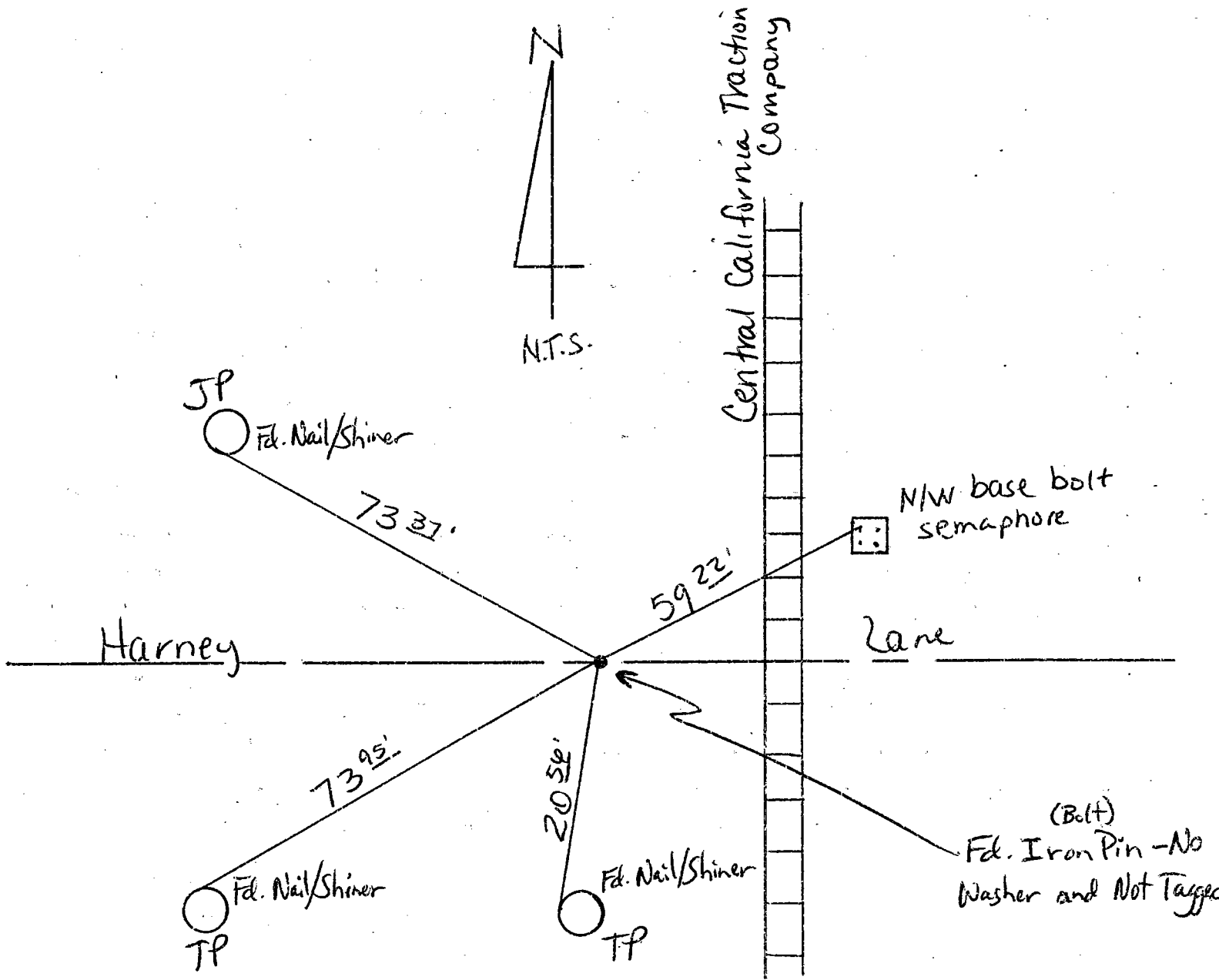
COUNTY SURVEYOR'S STATEMENT

This Corner Record was received 2-15, 2000 and examined and filed 2-15, 2000.

Signed Henry M. Hirata R.C.E. No. 21258
Title County Surveyor



County Surveyors Comment _____



"No Attempt Was Made To Verify Monument(s)"

FP = Fence Post

GP = Guy Post

JP = Joint Pole

PP = Power Pole

SP = Service Pole

TP = Telephone Pole

N.T.S. = Not To Scale

Set = Conc. Nails with Brass Washers Stamped "S.J. Co.", unless otherwise noted