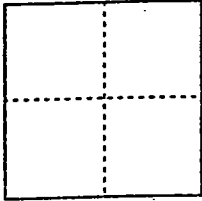


CORNER RECORD

Document Number 00-107
County of San Joaquin, California

City of _____

Brief Legal Description AT THE INTERSECTION OF HARNEY LANE AND
CURRY AVE NORTH PER R.M. 18-73



CORNER TYPE

Government Corner Control
Meander Property
Rancho Other
Date of Survey 12-30-99

COORDINATES (Optional)

N. _____
E. _____
Zone _____ NAD27 NAD83
NAD83 Epoch _____
Elev. _____
Vert. Datum: NGVD29 NAVD88
Meas. Units: Metric Imperial

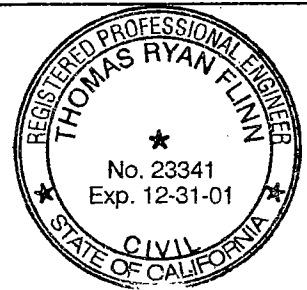
Corner - Left as found Found and tagged Established Reestablished _____ Rebuilt

Identification and type of corner found: Evidence used to identify or procedure used to establish or reestablish the corner:
FOUND BOLT & WASHER PER
P.M. 18-73 PER SWING TIES ON C.R. 00-70. SEE SKETCH ON BACKSIDE

A description of the physical condition of the monument as found and as set or reset: FOUND BOLT &
WASHER PER P.M. 18-73 IN GOOD CONDITION AND PLACED
MONUMENT WELL OVER MONUMENT. SEE SKETCH ON BACKSIDE

SURVEYOR'S STATEMENT

This Corner Record was prepared by me or under my direction in conformance with
the Land Surveyors' Act on Feb 11, 2000
Signed _____ L.S. or R.C.E. Number 23341

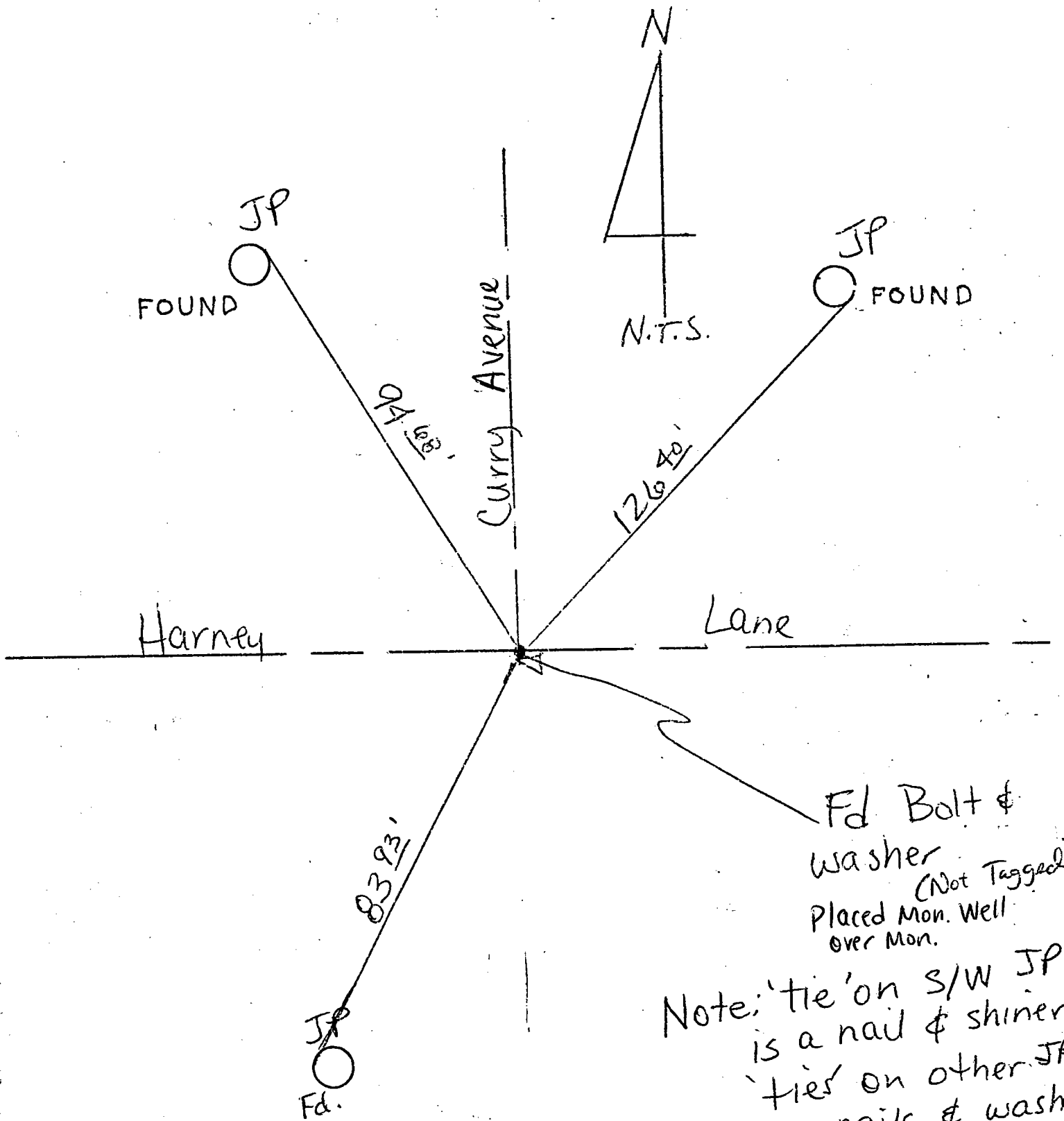


COUNTY SURVEYOR'S STATEMENT

This Corner Record was received 2-15, 2000 and examined
and filed 2-15, 2000.
Signed Henry M. Hirata R.C.E. No. 21258
Title County Surveyor



County Surveyors Comment _____



"No Attempt Was Made To Verify Monument(s)"

- FP = Fence Post
- GP = Guy Post
- JP = Joint Pole
- PP = Power Pole
- SP = Service Pole
- TP = Telephone Pole
- N.T.S. = Not To Scale
- Fd. = Conc. Nails with Brass Washers Stamped "S.J. Co.", unless otherwise noted