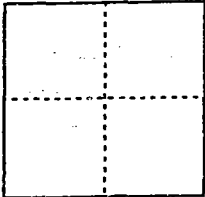


CORNER RECORD

Document Number 00-106  
County of San Joaquin, California

City of \_\_\_\_\_

Brief Legal Description Intersection of Santa Fe Road and Hall Avenue per F.B. 658, pg. 36.



CORNER TYPE

Government Corner  Control   
Meander  Property   
Rancho  Other   
Date of Survey 12-13-99

COORDINATES (Optional)

N. \_\_\_\_\_  
E. \_\_\_\_\_  
Zone \_\_\_\_\_ NAD27  NAD83   
NAD83 Epoch \_\_\_\_\_  
Elev. \_\_\_\_\_  
Vert. Datum: NGVD29  NAVD88   
Meas. Units: Metric  Imperial

Corner - Left as found  Found and tagged  Established  Reestablished  Rebuilt

LOCATION OF  
Identification and type of corner found: Evidence used to identify or procedure used to establish or reestablish the corner:  
Reestablished by Ed. Nail & Shiner (Not Tagged) per F.B. 658, pg. 36 per Swings on C.R. -00-105.  
TIES See Sketch on Backside

A description of the physical condition of the monument as found and as set or reset:  
See Sketch on Backside

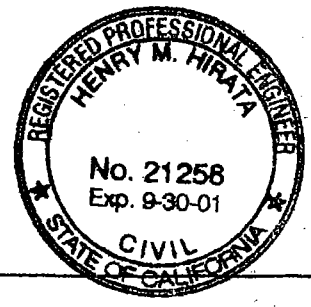
SURVEYOR'S STATEMENT

This Corner Record was prepared by me or under my direction in conformance with the Land Surveyors' Act on Feb 11, 2000.  
Signed \_\_\_\_\_ L.S. or R.C.E. Number 23341



COUNTY SURVEYOR'S STATEMENT

This Corner Record was received 2-15, 2000 and examined and filed 2-15, 2000.  
Signed Henry M. Hirata R.C.E. No. 21258  
Title County Surveyor

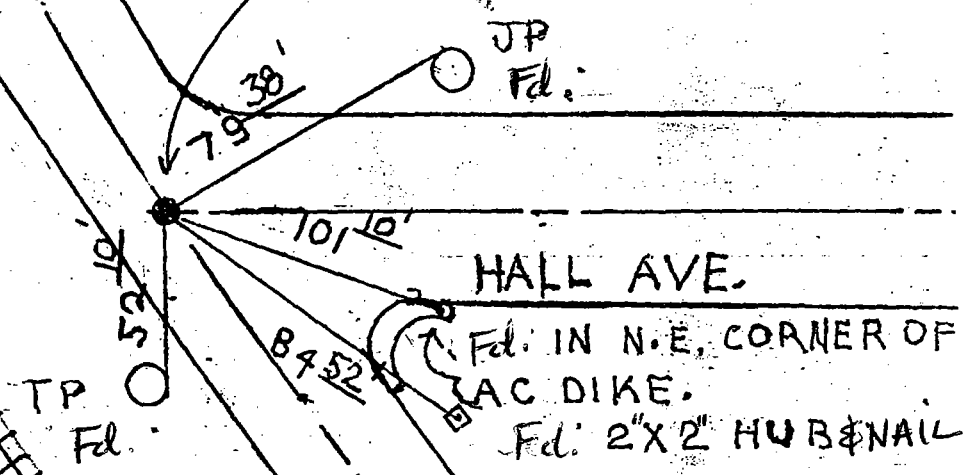


County Surveyors Comment \_\_\_\_\_



B.N.S.F. RR TRACKS

Set 3/4" Pin & Washer in Mon. Box  
(Tagged with Brass Washer Stamped "S.J. Co.")



"No Attempt Was Made To Verify Monument(s)"

- FP = Fence Post
- GP = Guy Post
- JP = Joint Pole
- PP = Power Pole
- SP = Service Pole
- TP = Telephone Pole
- N.T.S. = Not To Scale

Fdl. = Conc. Nails with Brass Washers Stamped "S.J. Co.", unless otherwise noted