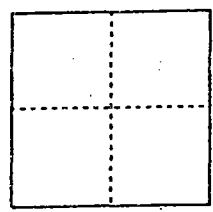


CORNER RECORD

Document Number 00-105  
County of San Joaquin, California

City of \_\_\_\_\_

Brief Legal Description Intersection of Santa Fe Road and Hall Avenue per F.B. 658  
pg. 36.



CORNER TYPE

Government Corner  Control   
Meander  Property   
Rancho  Other   
Date of Survey 10-04-99

COORDINATES (Optional)

N. \_\_\_\_\_  
E. \_\_\_\_\_  
Zone \_\_\_\_\_ NAD27  NAD83   
NAD83 Epoch \_\_\_\_\_  
Elev. \_\_\_\_\_  
Vert. Datum: NGVD29  NAVD88   
Meas. Units: Metric  Imperial

Corner - Left as found  Found and tagged  Established  Reestablished  Rebuilt

Identification and type of corner found: Evidence used to identify or procedure used to establish or reestablish the corner:  
See Sketch on Backside

A description of the physical condition of the monument as found and as set or reset:  
Found Monument in good condition.  
See Sketch on Backside

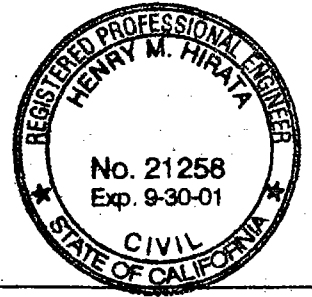
SURVEYOR'S STATEMENT

This Corner Record was prepared by me or under my direction in conformance with the Land Surveyors' Act on Feb 11, 2000.  
Signed [Signature] L.S. or R.C.E. Number 23341

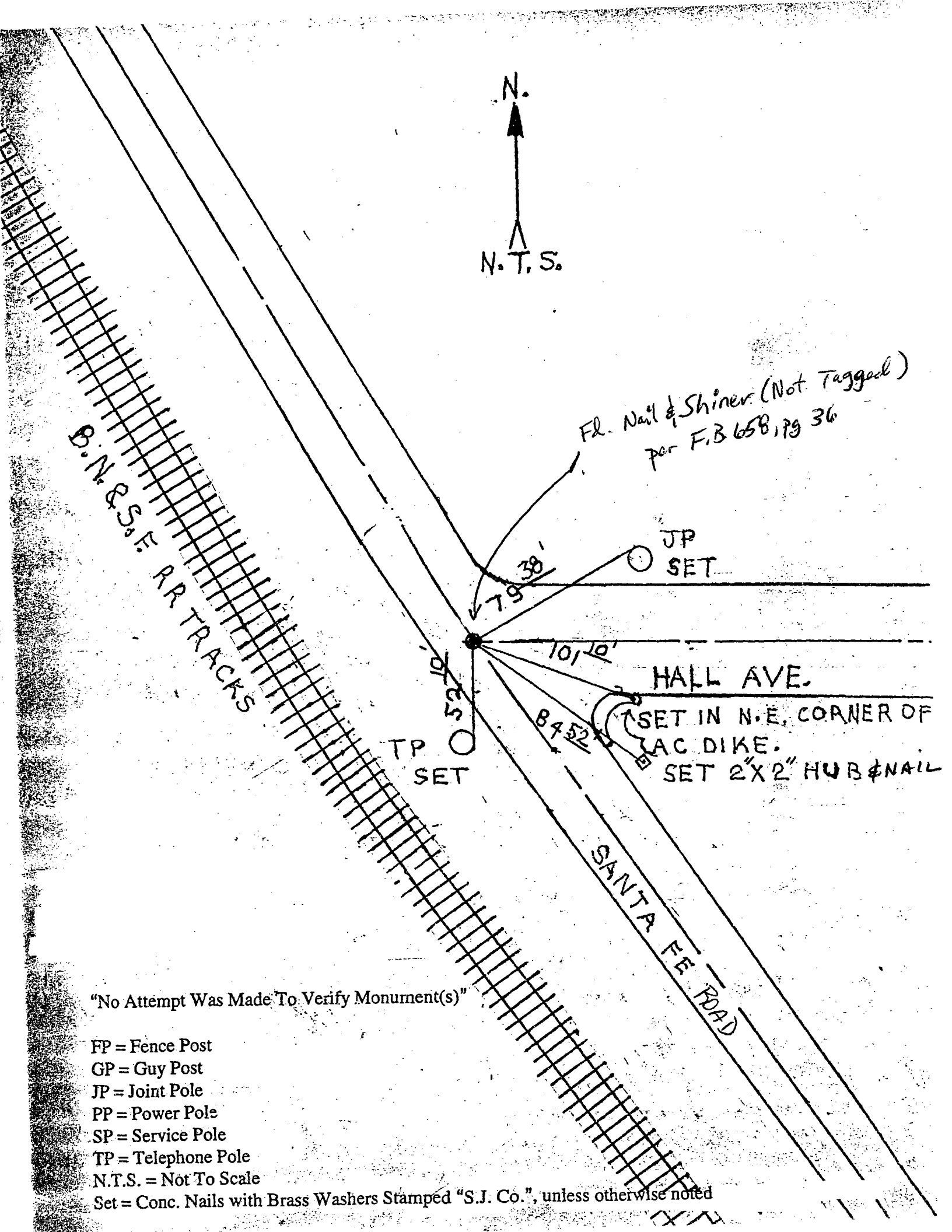


COUNTY SURVEYOR'S STATEMENT

This Corner Record was received 2-15, 2000 and examined and filed 2-15, 2000.  
Signed Henry M. Hirata R.C.E. No. 21258  
Title County Surveyor



County Surveyors Comment \_\_\_\_\_



N.  
N.T.S.

FR. Nail & Shiner (Not Tagged)  
per F.B. 658, pg 36

B.N. & S.F. RR TRACKS

JP SET

TP SET

HALL AVE.

SET IN N.E. CORNER OF  
LAC DIKE.  
SET 2" X 2" HUB & NAIL

SANTA FE ROAD

"No Attempt Was Made To Verify Monument(s)"

- FP = Fence Post
- GP = Guy Post
- JP = Joint Pole
- PP = Power Pole
- SP = Service Pole
- TP = Telephone Pole
- N.T.S. = Not To Scale

Set = Conc. Nails with Brass Washers Stamped "S.J. Co.", unless otherwise noted