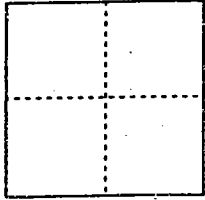


CORNER RECORD

Document Number 00-104
County of San Joaquin, California

City of _____

Brief Legal Description Santa Fe Road 2950'± Southeasterly of Harrold Avenue
per F.B. 658, pg. 34



CORNER TYPE

- Government Corner Control
- Meander Property
- Rancho Other

Date of Survey 12-13-99

COORDINATES (Optional)

N. _____
 E. _____
 Zone: _____ NAD27 NAD83
 NAD83 Epoch _____
 Elev. _____
 Vert. Datum: NGVD29 NAVD88
 Meas. Units: Metric Imperial

Corner - Left as found Found and tagged Established Reestablished Rebuilt

Identification and type of corner found: Evidence used to identify or procedure used to establish or reestablish the corner:

Reestablished location of Found Nail & Washer (Not Tagged) per F.B. 658,
pg. 34 per Swingties on C.R. - 00-103.
See Sketch on Backside

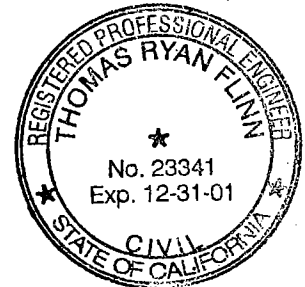
A description of the physical condition of the monument as found and as set or reset: Reset 3/4" Pin & Washer

Tagged with Washer Stamped "S.J.Co." per Swingties on C.R. - 00-103 and
placed Mon. Well over Monument.
See Sketch on Backside

SURVEYOR'S STATEMENT

This Corner Record was prepared by me or under my direction in conformance with the Land Surveyors' Act on Feb 11, 2000.

Signed [Signature] L.S. or R.C.E. Number 23341



COUNTY SURVEYOR'S STATEMENT

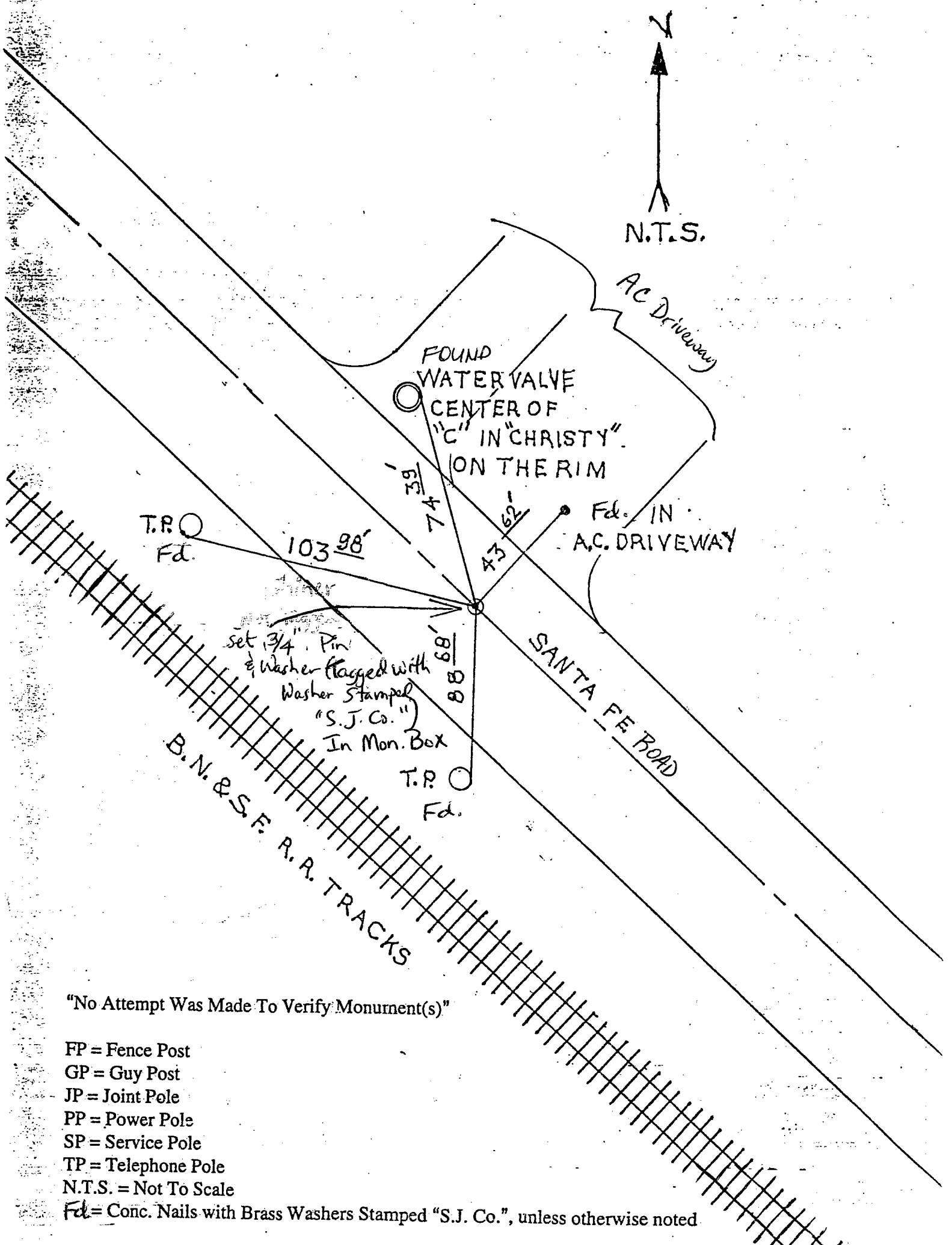
This Corner Record was received 2-15, 2000 and examined and filed 2-15, 2000.

Signed Henry M. Hirata R.C.E. No. 21258

Title County Surveyor



County Surveyors Comment _____



N.T.S.

AC Driveway

FOUND WATER VALVE
CENTER OF
"C" IN "CHRISTY"
ON THE RIM

Fd. IN
A.C. DRIVEWAY

SANTA FE ROAD

B.N. & S.F. R.R. TRACKS

T.R. Fd.

74' $\frac{39}{100}$

103' $\frac{98}{100}$

43' $\frac{62}{100}$

88' $\frac{68}{100}$

T.R. Fd.

set $\frac{3}{4}$ " Pin
& Washer flagged with
Washer stamped
"S.J. Co."
In Mon. Box

"No Attempt Was Made To Verify Monument(s)"

- FP = Fence Post
- GP = Guy Post
- JP = Joint Pole
- PP = Power Pole
- SP = Service Pole
- TP = Telephone Pole
- N.T.S. = Not To Scale

Fd. = Conc. Nails with Brass Washers Stamped "S.J. Co.", unless otherwise noted.