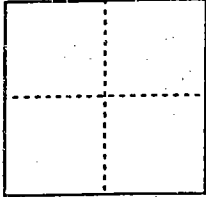


CORNER RECORD

Document Number 00-103  
County of San Joaquin, California

City of \_\_\_\_\_

Brief Legal Description Santa Fe Road 2950' ± Southeasterly of Harrold Avenue  
per F.B. 658, pg. 34



CORNER TYPE

Government Corner  Control   
Meander  Property   
Rancho  Other   
Date of Survey 11-15-99

COORDINATES (Optional)

N. \_\_\_\_\_  
E. \_\_\_\_\_  
Zone \_\_\_\_\_ NAD27  NAD83   
NAD83 Epoch \_\_\_\_\_  
Elev. \_\_\_\_\_  
Vert. Datum: NGVD29  NAVD88   
Meas. Units: Metric  Imperial

Corner - Left as found  Found and tagged  Established  Reestablished  Rebuilt

Identification and type of corner found: Evidence used to identify or procedure used to establish or reestablish the corner:

See Sketch on Backside

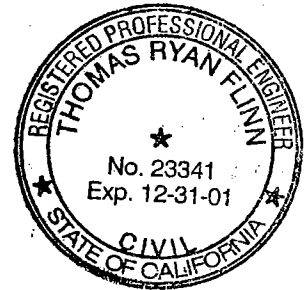
A description of the physical condition of the monument as found and as set or reset:

Found Monument in good condition.  
See Sketch on Backside

SURVEYOR'S STATEMENT

This Corner Record was prepared by me or under my direction in conformance with the Land Surveyors' Act on Feb 11, 2000.

Signed \_\_\_\_\_ L.S. or R.C.E. Number 23341

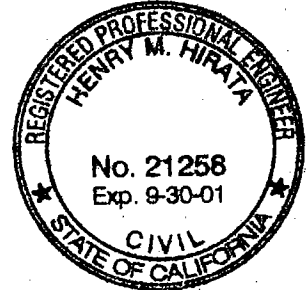


COUNTY SURVEYOR'S STATEMENT

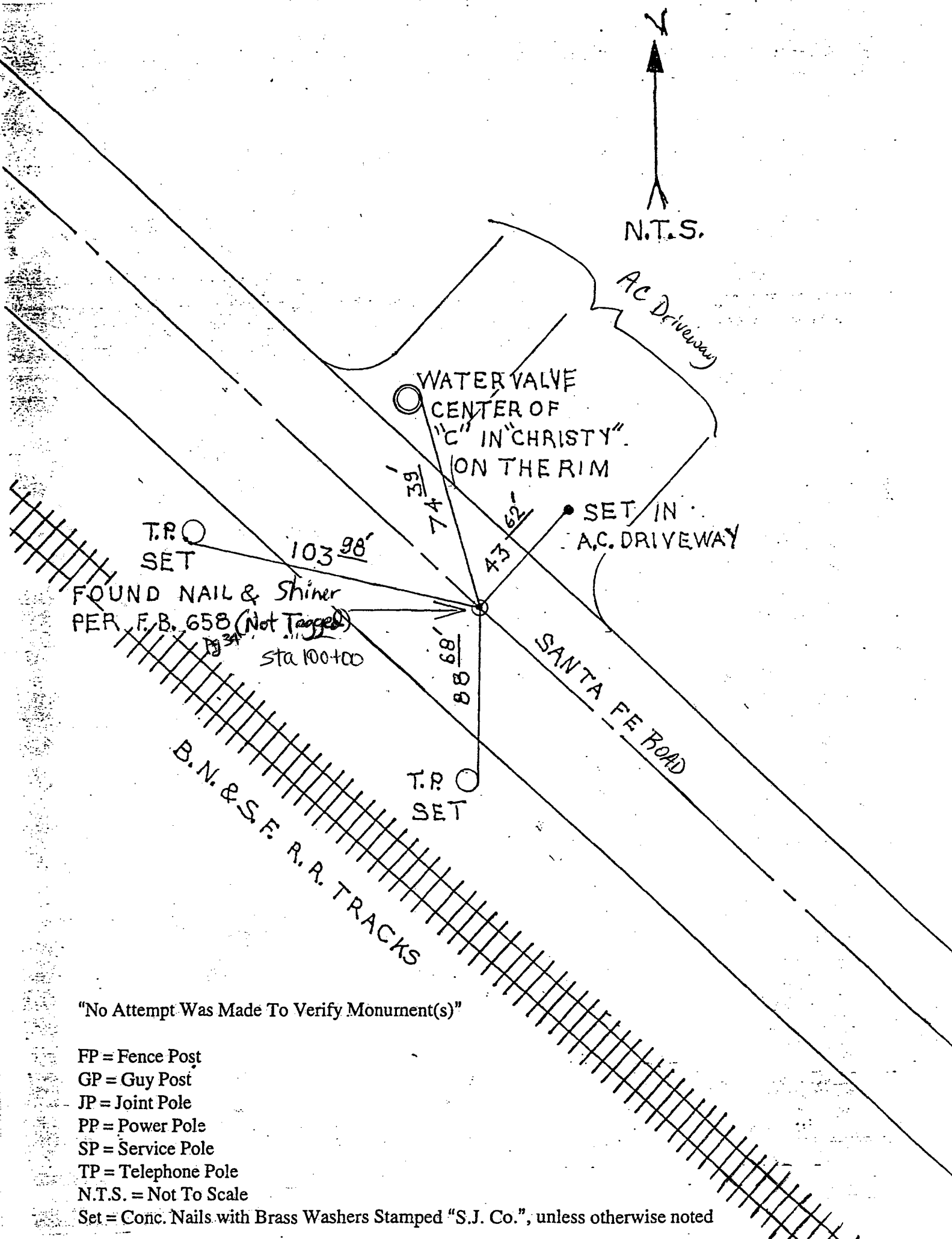
This Corner Record was received 2-15, 2000 and examined and filed 2-15, 2000.

Signed Henry M. Hirata R.C.E. No. 21258

Title County Surveyor



County Surveyors Comment \_\_\_\_\_



N.T.S.

AC Driveway

WATER VALVE  
CENTER OF  
"C" IN "CHRISTY"  
ON THE RIM

SET IN  
A.C. DRIVEWAY

SANTA FE ROAD

B.N. & S.F. R.R. TRACKS

T.R. SET

103' 98"

FOUND NAIL & Shiner  
PER F.B. 658 (Not Tagged)  
Sta 100+00

T.R. SET

"No Attempt Was Made To Verify Monument(s)"

FP = Fence Post

GP = Guy Post

JP = Joint Pole

PP = Power Pole

SP = Service Pole

TP = Telephone Pole

N.T.S. = Not To Scale

Set = Conc. Nails with Brass Washers Stamped "S.J. Co.", unless otherwise noted