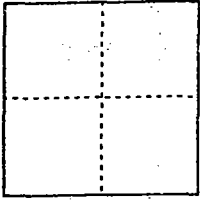


CORNER RECORD

Document Number 00-102  
County of San Joaquin, California

City of \_\_\_\_\_

Brief Legal Description Santa Fe Road 2396'± Southeasterly of Hall Avenue per  
F.B. 65B, pg. 36



CORNER TYPE

Government Corner  Control   
Meander  Property   
Rancho  Other   
Date of Survey 12-13-99

COORDINATES (Optional)

N. \_\_\_\_\_  
E. \_\_\_\_\_  
Zone \_\_\_\_\_ NAD27  NAD83   
NAD83 Epoch \_\_\_\_\_  
Elev. \_\_\_\_\_  
Vert. Datum: NGVD29  NAVD88   
Meas. Units: Metric  Imperial

Corner - Left as found  Found and tagged  Established  Reestablished  Rebuilt

Identification and type of corner found: Evidence used to identify or procedure used to establish or reestablish the corner:  
Reestablished Fd. Bolt & Washer (Not Tagged) per F.B. 65B, pg. 36 per  
Swingties on C.R. 00-101.  
See Sketch on Backside

A description of the physical condition of the monument as found and as set or reset: Fd. Bolt & Washer (Not  
Tagged) per F.B. 65B, pg. 36 in good condition and placed Mon. Box  
over Monument.  
See Sketch on Backside

SURVEYOR'S STATEMENT

This Corner Record was prepared by me or under my direction in conformance with  
the Land Surveyors' Act on Feb 11, 2000.

Signed [Signature] L.S. or R.C.E. Number 23341



COUNTY SURVEYOR'S STATEMENT

This Corner Record was received \_\_\_\_\_, 200\_\_ and examined  
and filed \_\_\_\_\_, 200\_\_.

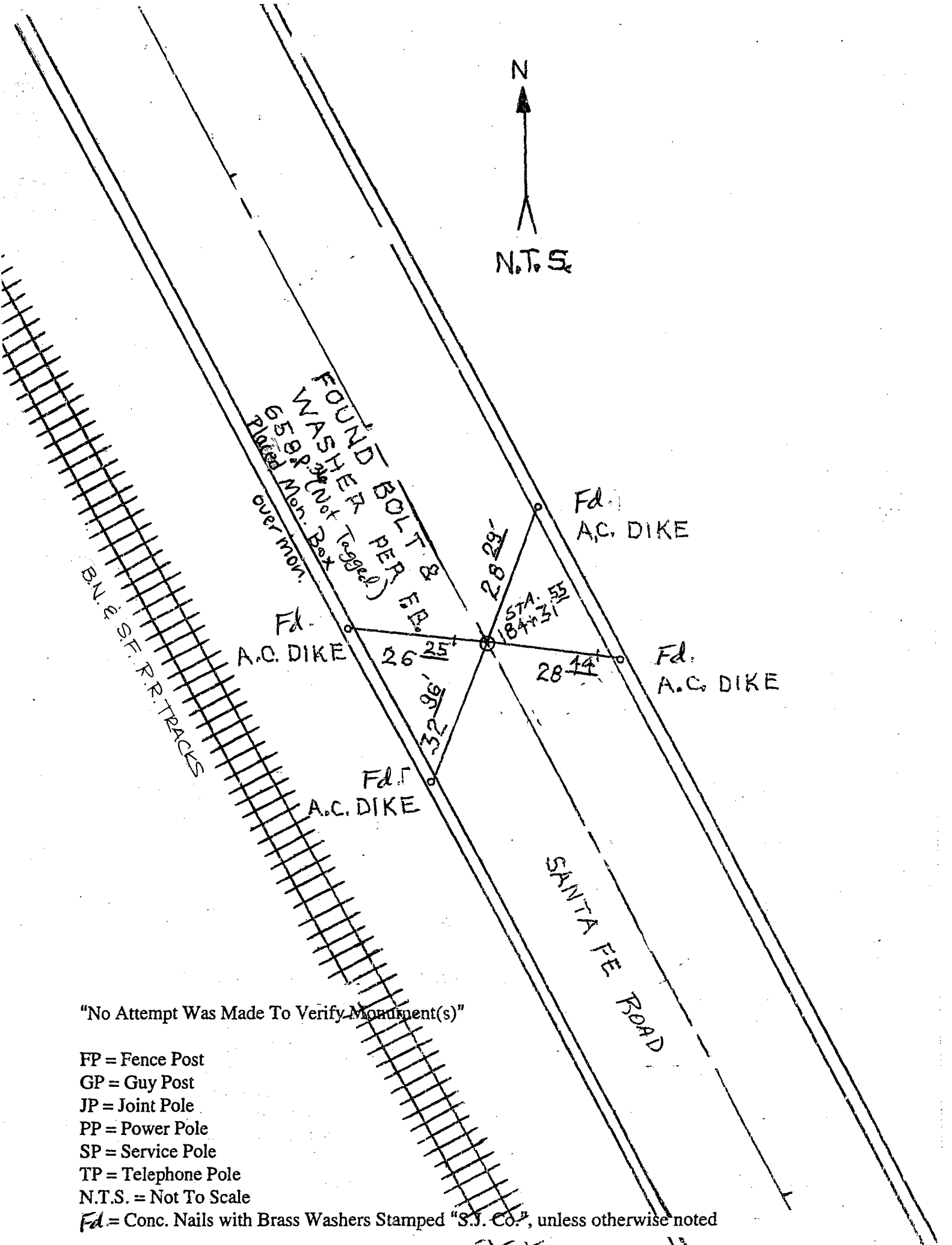
Signed Henry M. Hirata R.C.E. No. \_\_\_\_\_

Title County Surveyor



County Surveyors Comment \_\_\_\_\_

(D.D. Sheet No. 63)



"No Attempt Was Made To Verify Monument(s)"

FP = Fence Post

GP = Guy Post

JP = Joint Pole

PP = Power Pole

SP = Service Pole

TP = Telephone Pole

N.T.S. = Not To Scale

Fd = Conc. Nails with Brass Washers Stamped "S.J. Co.", unless otherwise noted